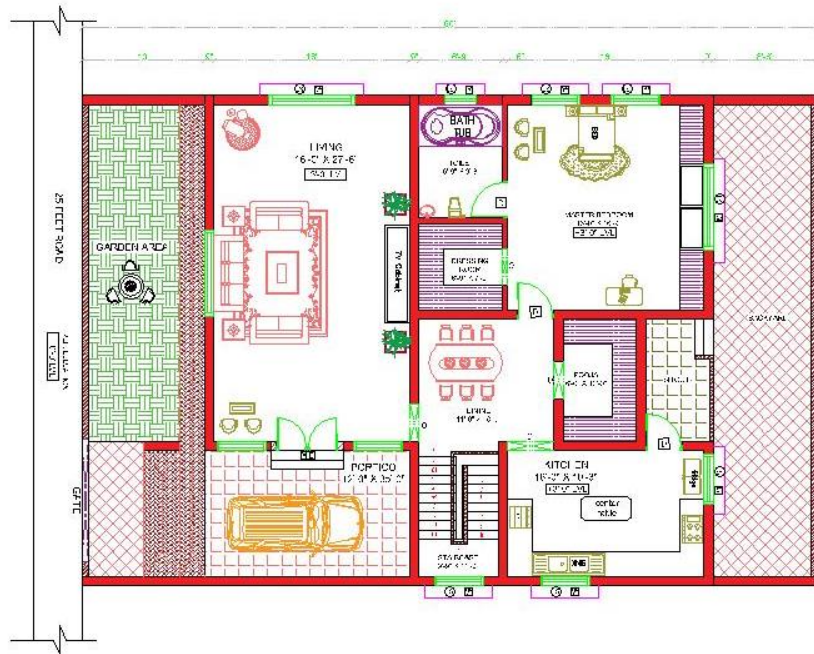
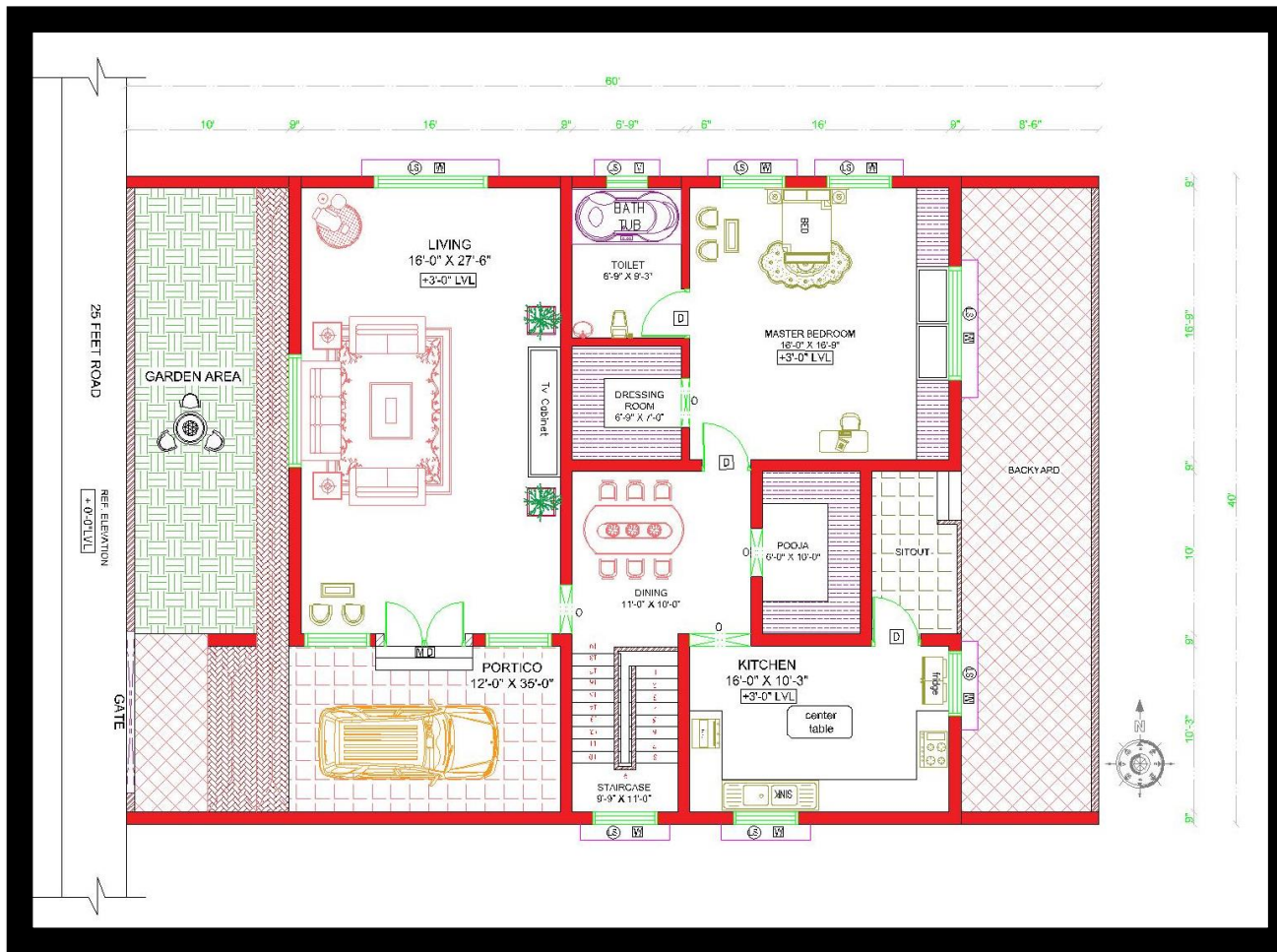


GROUND FLOOR AND FIRST FLOOR PLAN



FLOOR PLAN



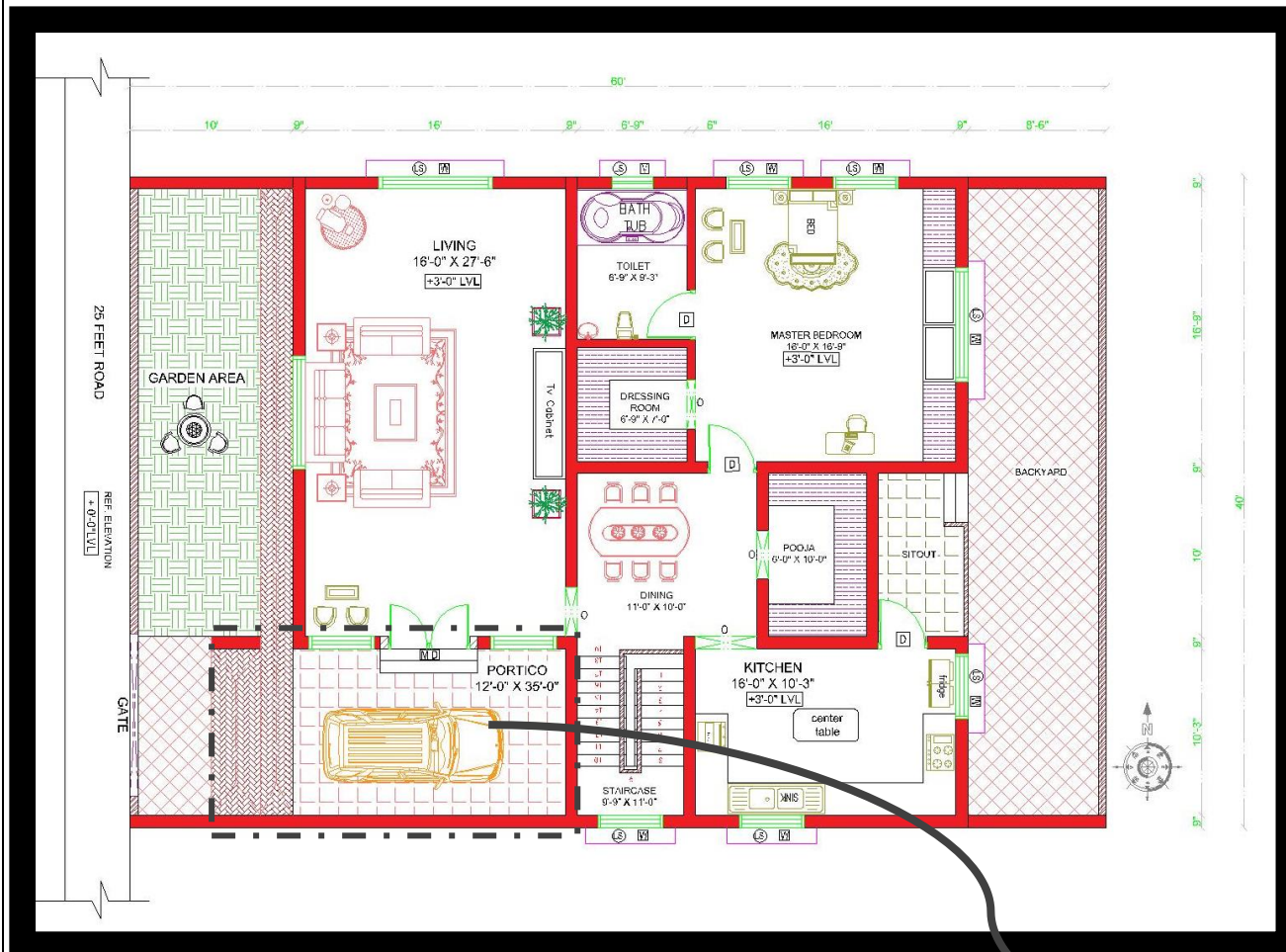
HOUSE PLAN 60'-0" x 40'-0" / WEST FACING |

House Plan ground floors, the floors are completely utilized without wastage.

The plot size is 60'-0" x 40'-0". Total plinth area of building is 2400 sqft and The Built up area is 1800 sqft at ground floor , 1700 sqft at first floor with fully occupied floor place.

In Ground floor 1 BHK and 3 BHK in first floor independent house type. The house plans is well utilised with all utilities, staircase, balcony and well accommodating floor .

GROUND FLOOR PLAN

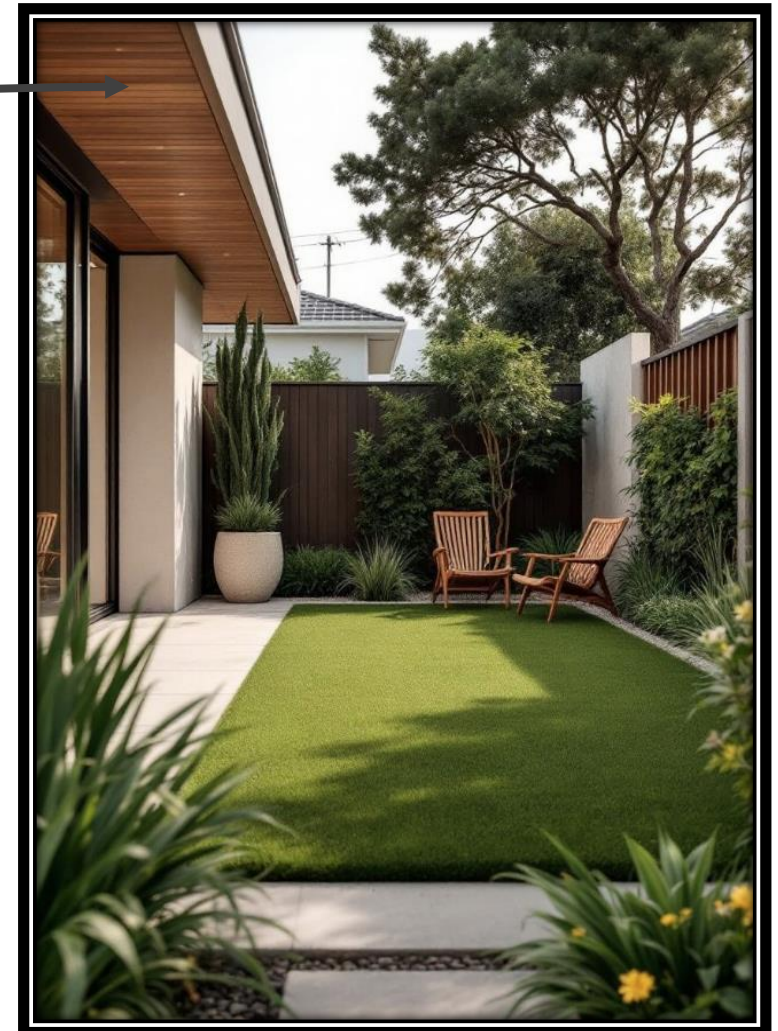


Car parking in buildings is a crucial aspect of modern infrastructure, providing residents, employees, and visitors with safe and convenient vehicle storage. Depending on the design and space availability, parking may be open, covered, basement-level, or multilevel, with some advanced systems offering automated or mechanical solutions.

Welcomes with soft colors, natural elements, and a minimalist design. Gentle lighting, lush greenery, and soothing scents create a calm and peaceful atmosphere, inviting serenity from the moment you step in

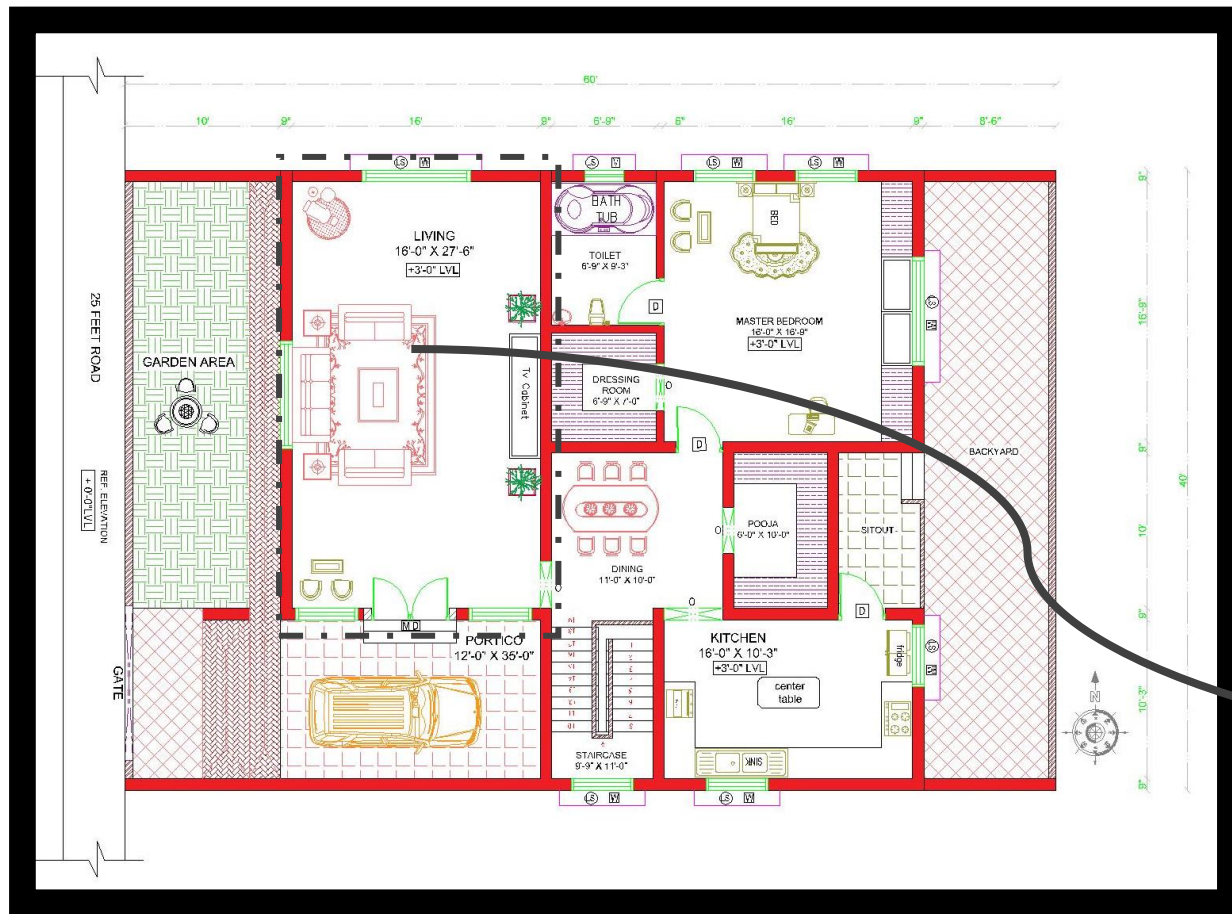


GROUND FLOOR PLAN – GARDEN AREA

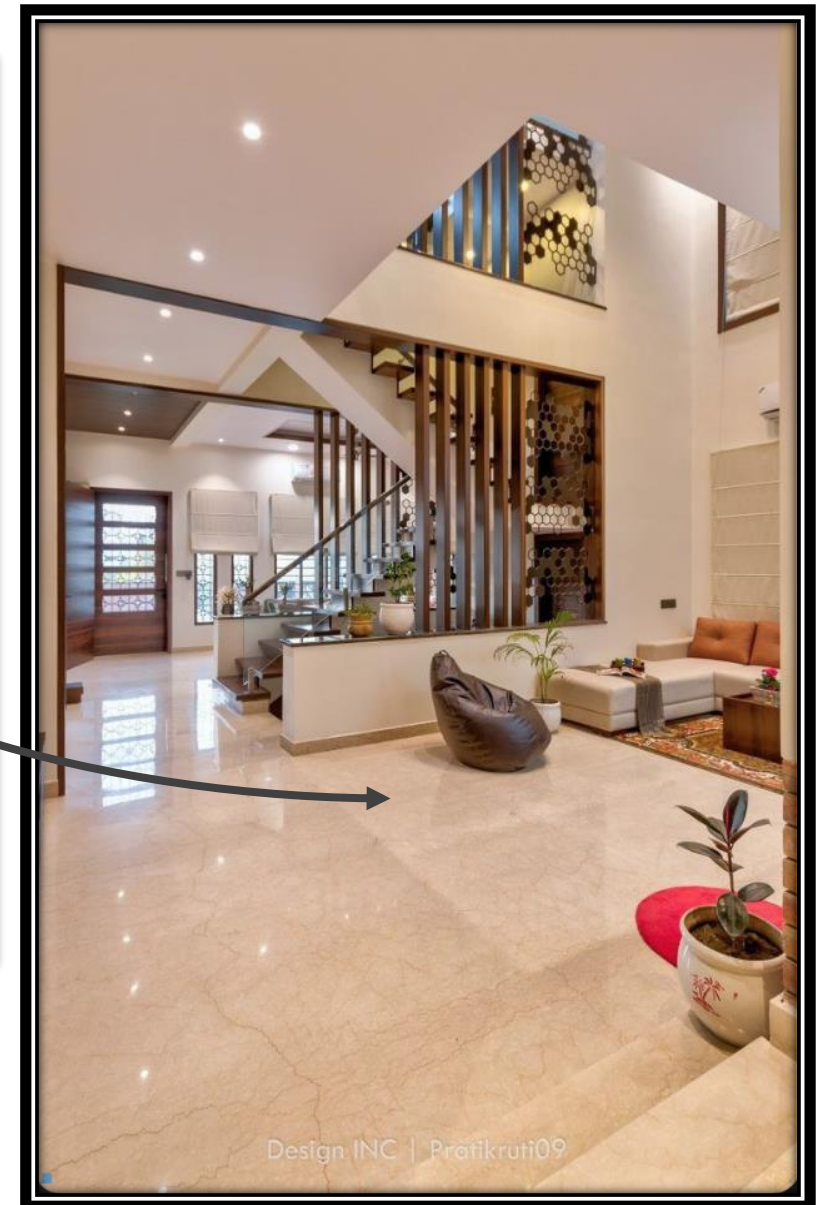


A **garden area** refers to a designated space—outdoor or sometimes indoor—where plants, flowers, vegetables, herbs, or ornamental features are cultivated. Garden areas can vary widely in size, design, and purpose, and may include natural or man-made elements to enhance their aesthetic and functional value.

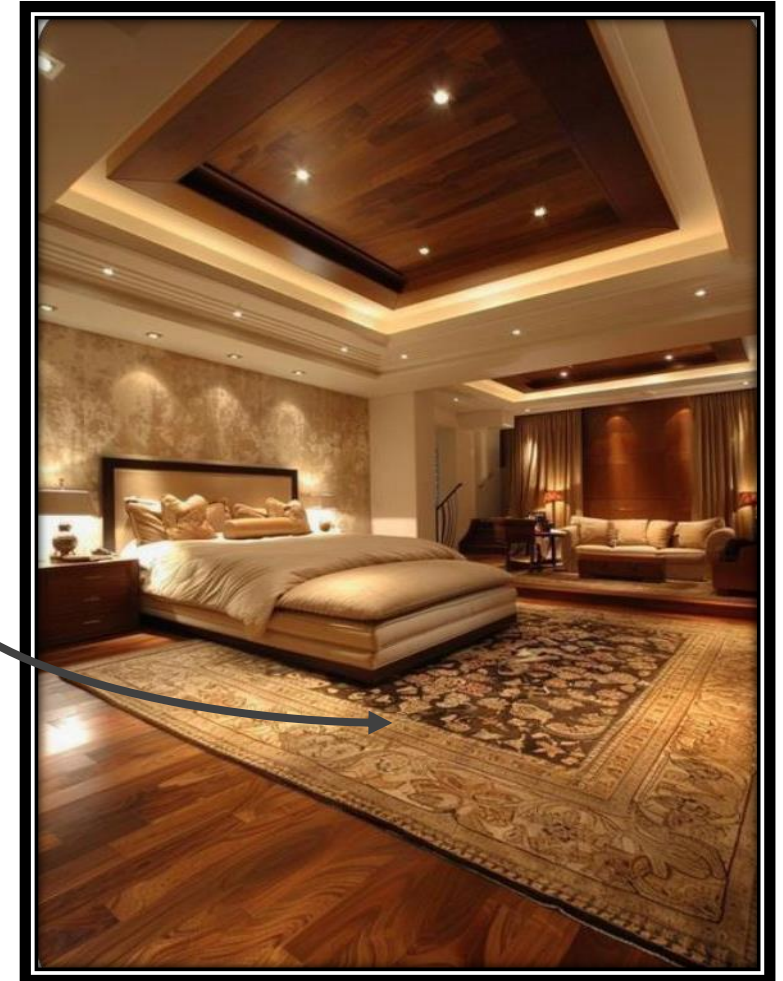
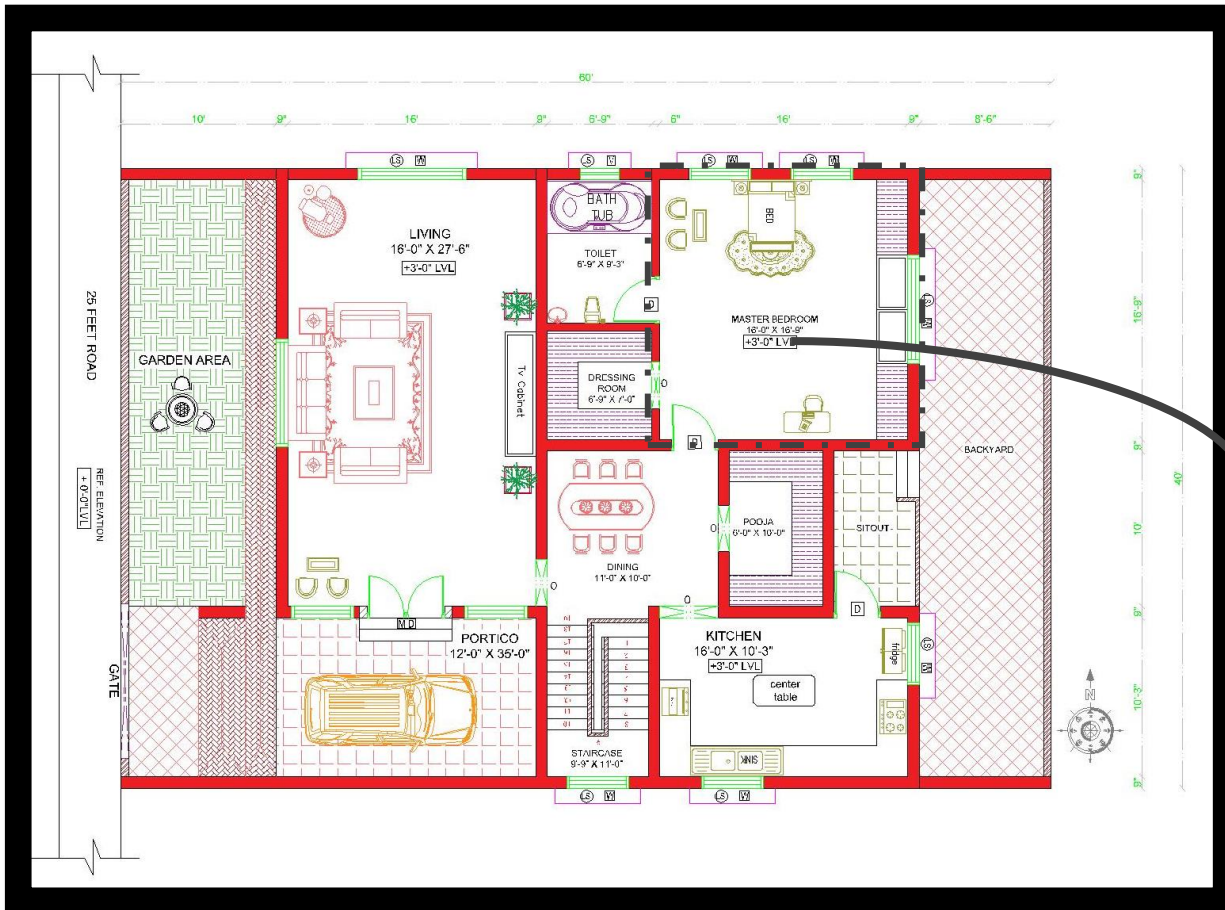
GROUND FLOOR PLAN – LIVING [16'-0" X 27'-6"]



The experience, process, and state of being alive. It encompasses not just biological existence but also the emotional, mental, social, and cultural dimensions of human life..

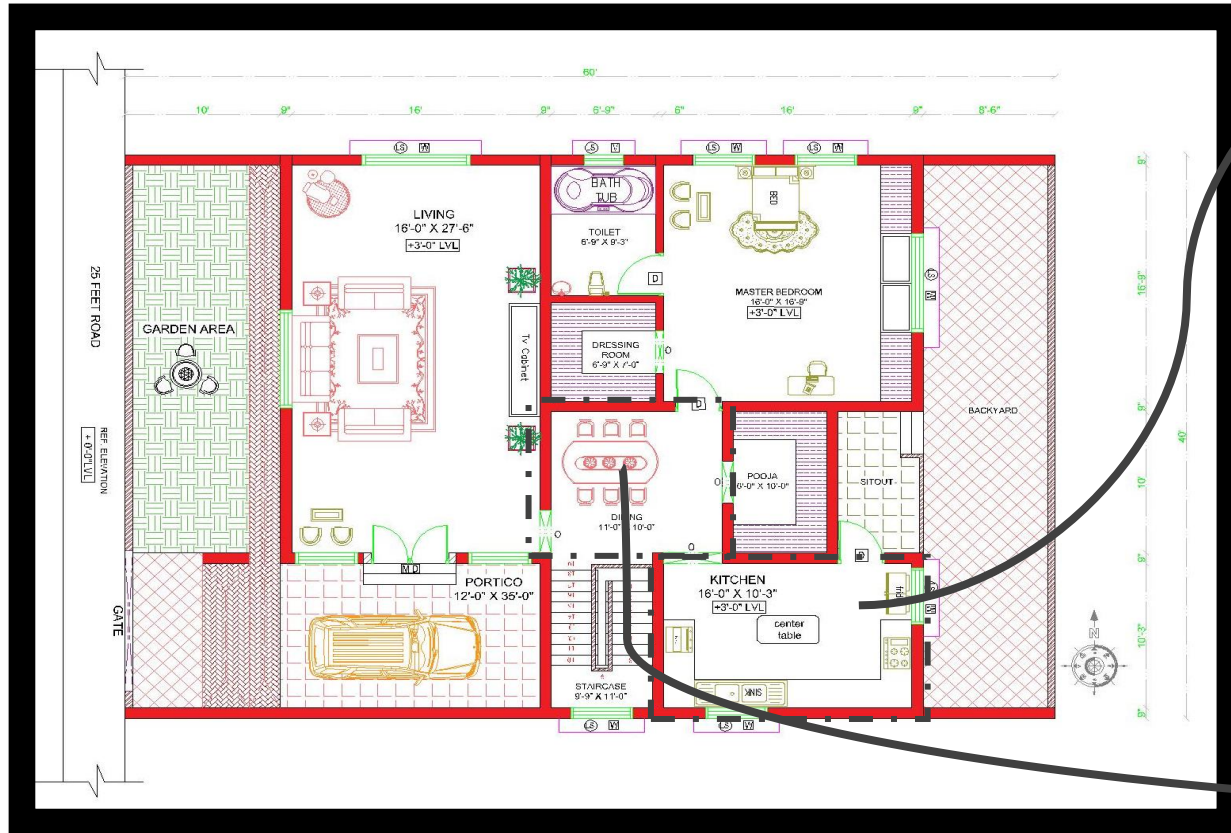


GROUND FLOOR PLAN – MASTER BEDROOM [16'-0" X 16'-9"]



Private space in a home where people rest and sleep. It usually contains a bed, which is the main piece of furniture, along with items like a wardrobe or closet for storing clothes, a nightstand, and sometimes a desk or chair. Bedrooms often reflect the personal style of the person using them through decor such as curtains, rugs, wall art, and bedding. Good lighting, whether natural or from lamps, helps make the room comfortable and functional.

GROUND FLOOR PLAN – KITCHEN [16'-0" X 10'-3"],
DINING [11'-0" X 10'-0"]

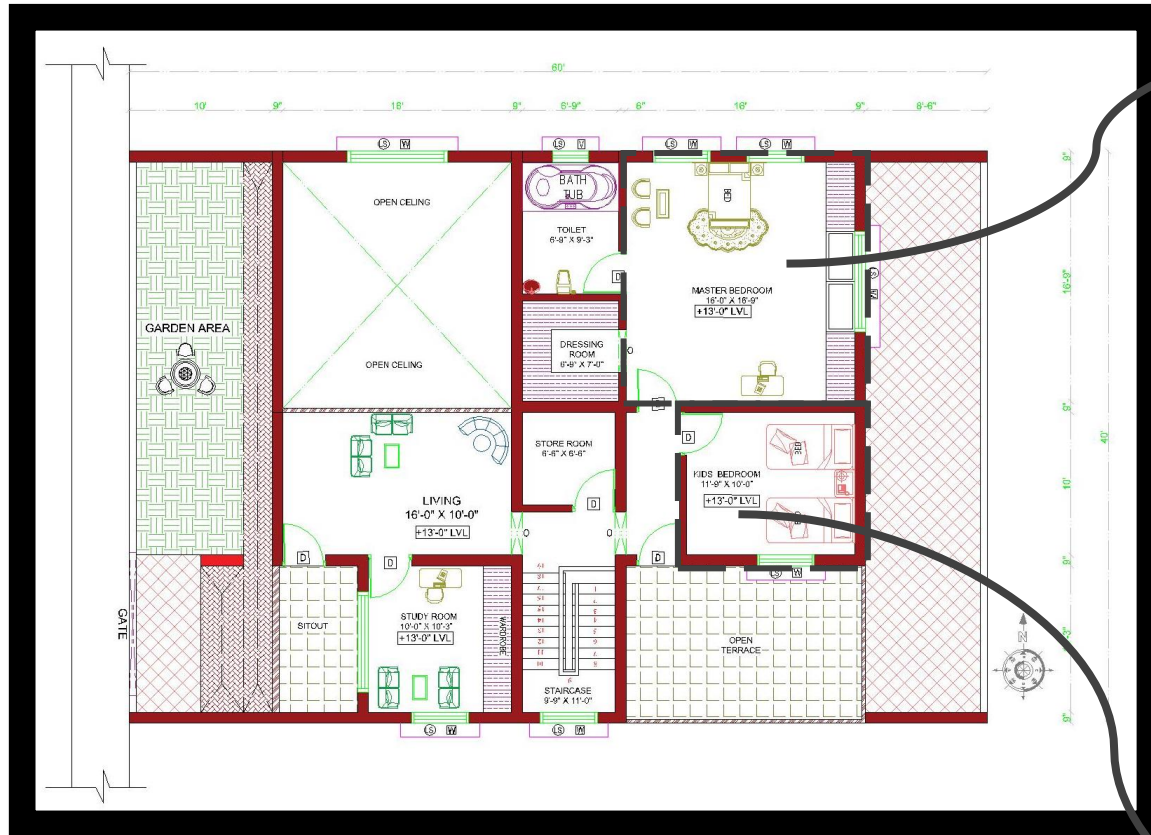


A **kitchen** and **dining area** are essential parts of a home where food is prepared, cooked, and enjoyed. The kitchen is typically equipped with appliances like a stove, oven, refrigerator, and sink, along with storage cabinets and countertops for food preparation. It may also include modern gadgets like a microwave, dishwasher, and blender. The dining area, often located next to or within the kitchen, is where meals are served and shared. It usually contains a dining table and chairs, creating a space for family gatherings and social interactions.



FIRST FLOOR PLAN

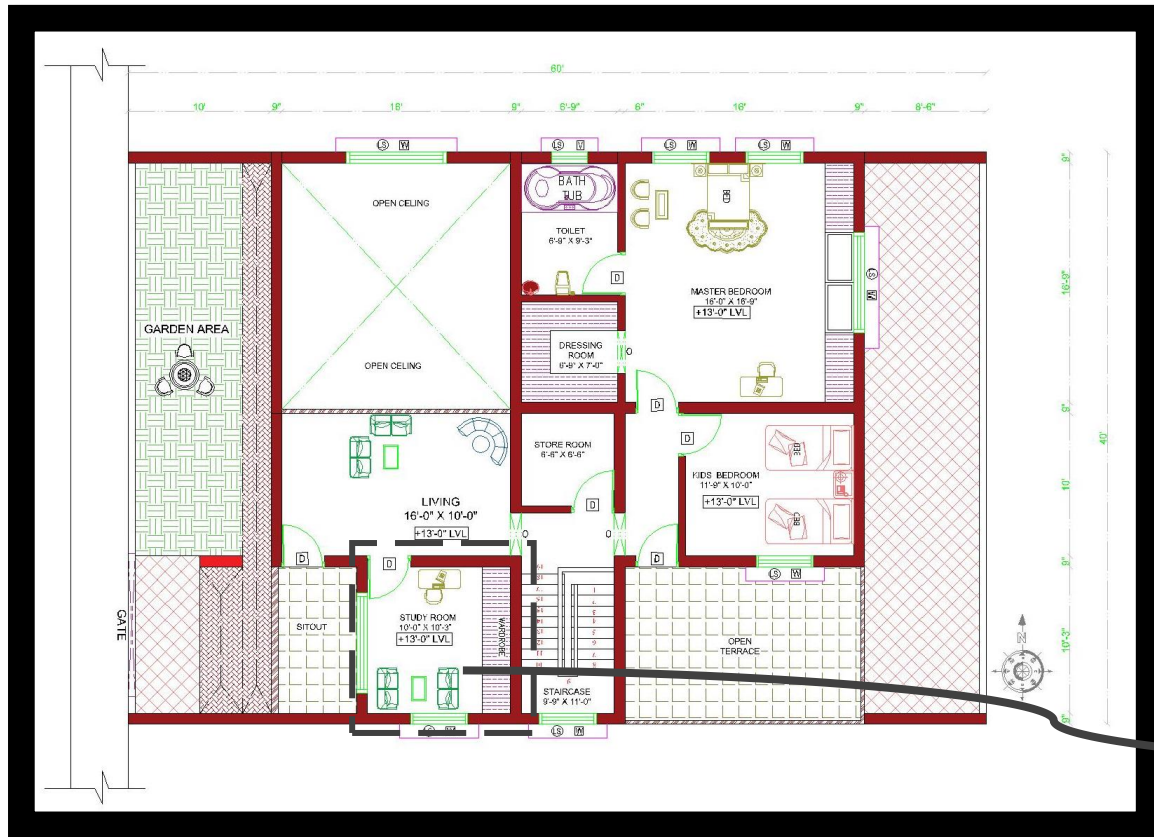
BEDROOM [16'-0" X 16'-9"], KIDS BEDROOM [11'-9" X 10'-0"]



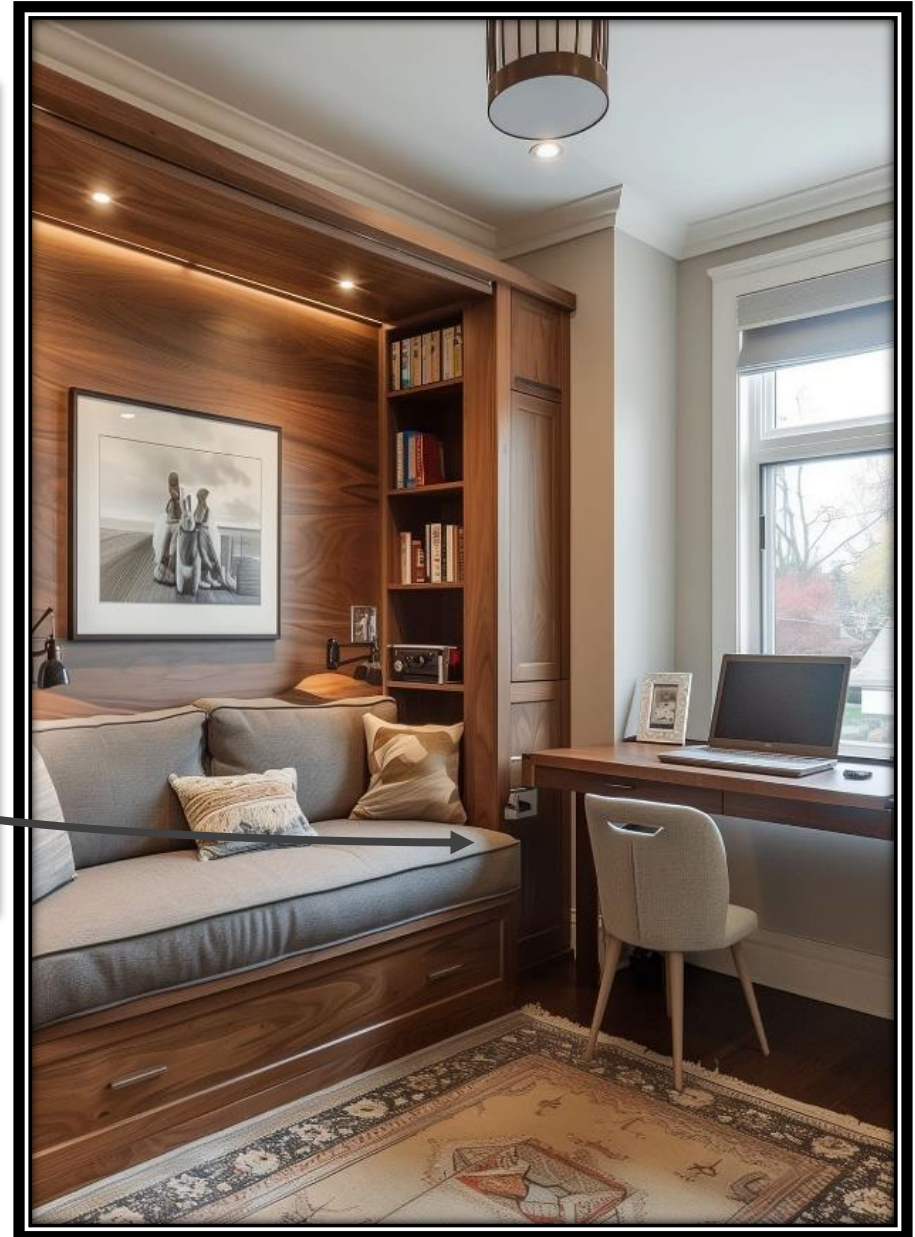
A special space designed to meet the needs, interests, and comfort of children. It typically includes a bed suited to the child's age, along with storage solutions like dressers, shelves, or toy boxes to keep clothes, toys, and books organized. Bright colors, fun themes, and playful decorations are often used to create an inviting and imaginative environment.



FIRST FLOOR PLAN- STUDY ROOM [10'-0" X 10'-3"]



A quiet and organized space in a home dedicated to reading, writing, studying, or working. It is usually furnished with a desk, a comfortable chair, good lighting, and shelves or cabinets to store books, stationery, and other learning materials. The environment is designed to be free from distractions to help improve focus and productivity.



THE LOOK

