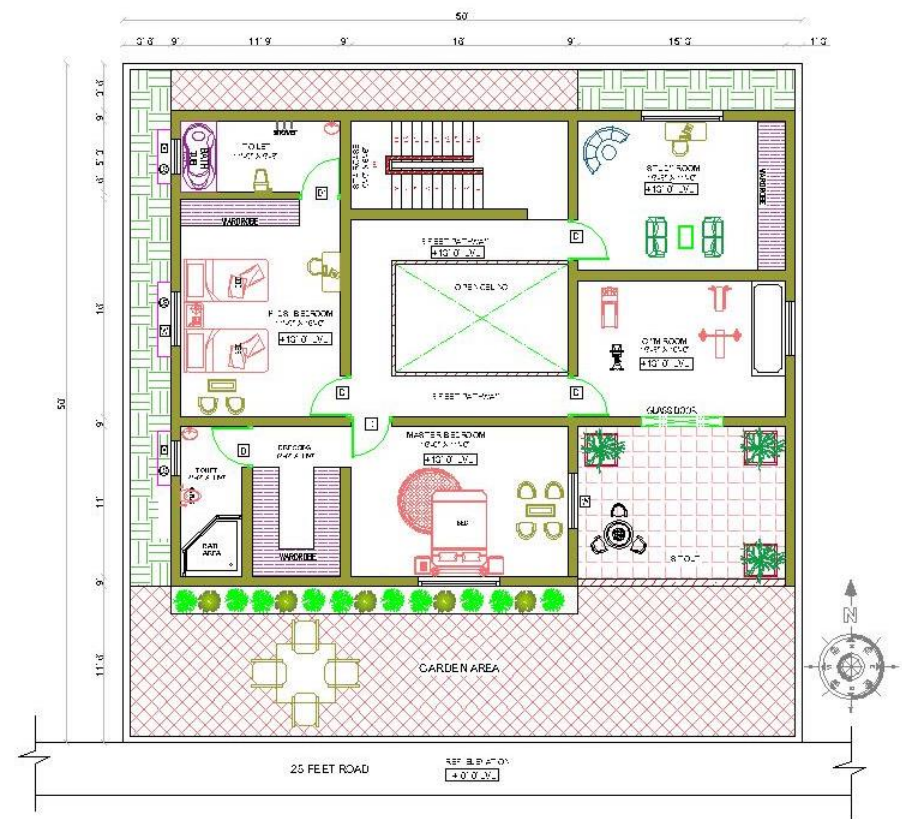
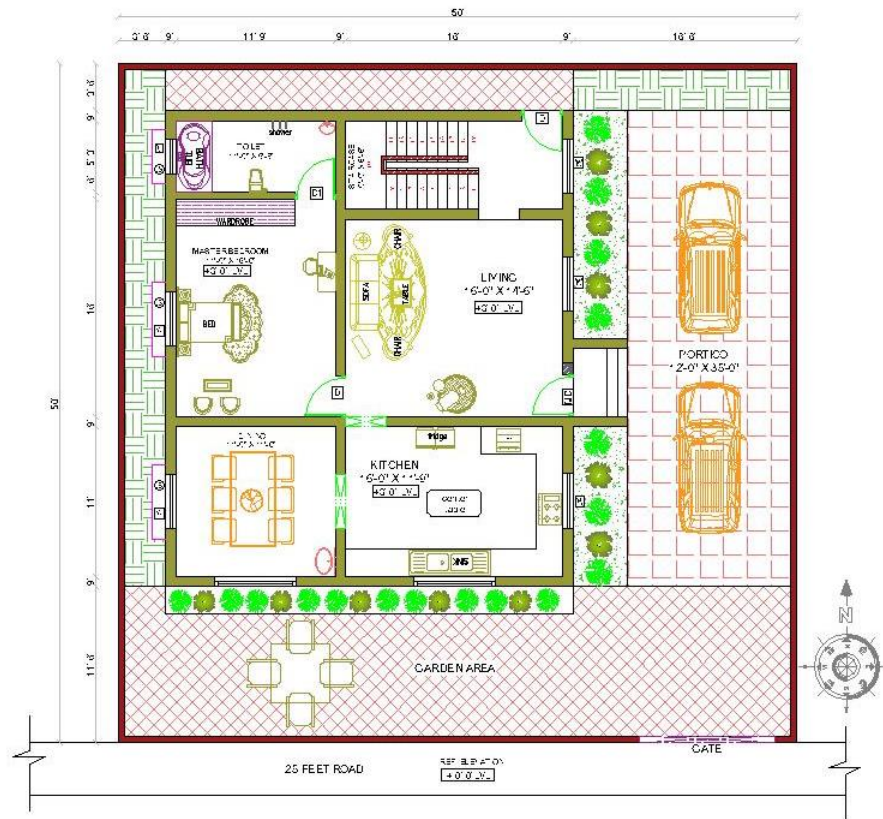
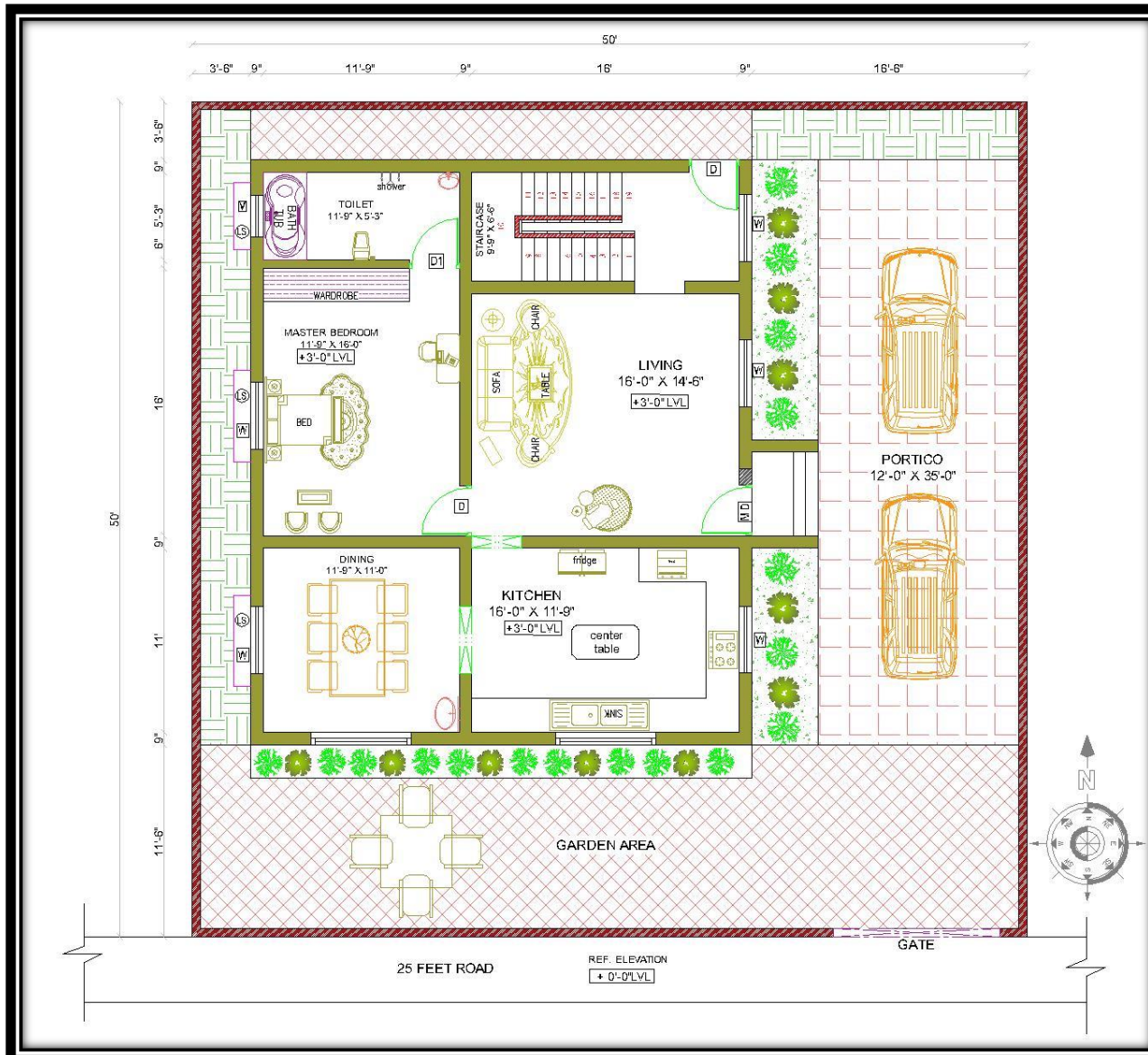


GROUND FLOOR AND FIRST FLOOR PLAN



FLOOR PLAN



HOUSE PLAN 50'-0" x 50'-0" /
SOUTH FACING |

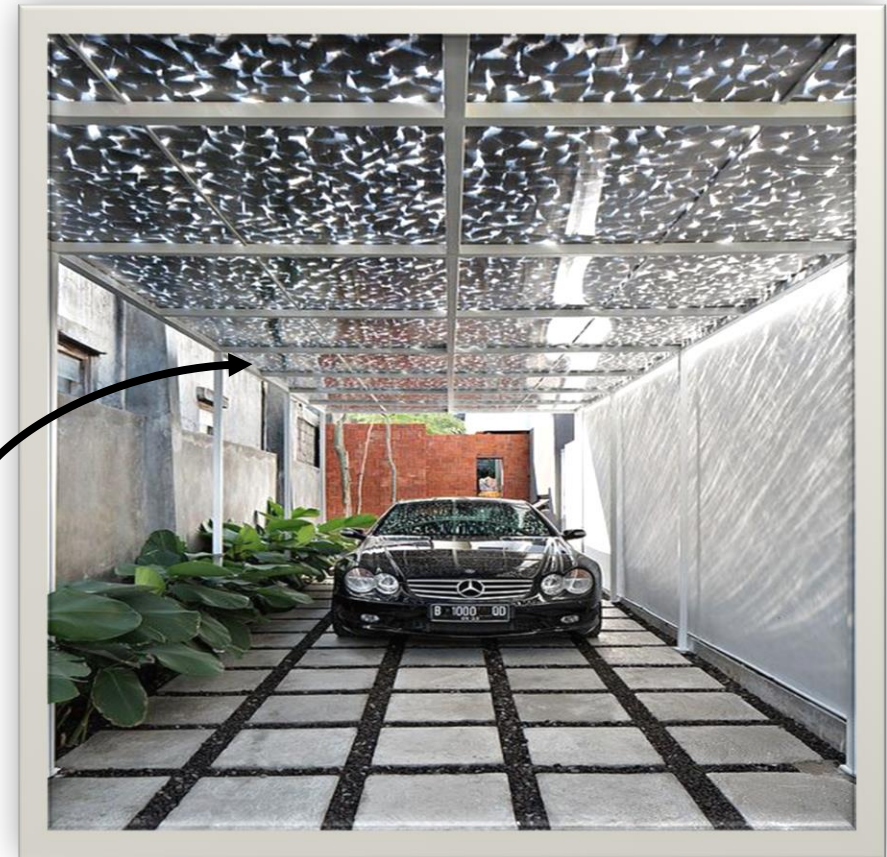
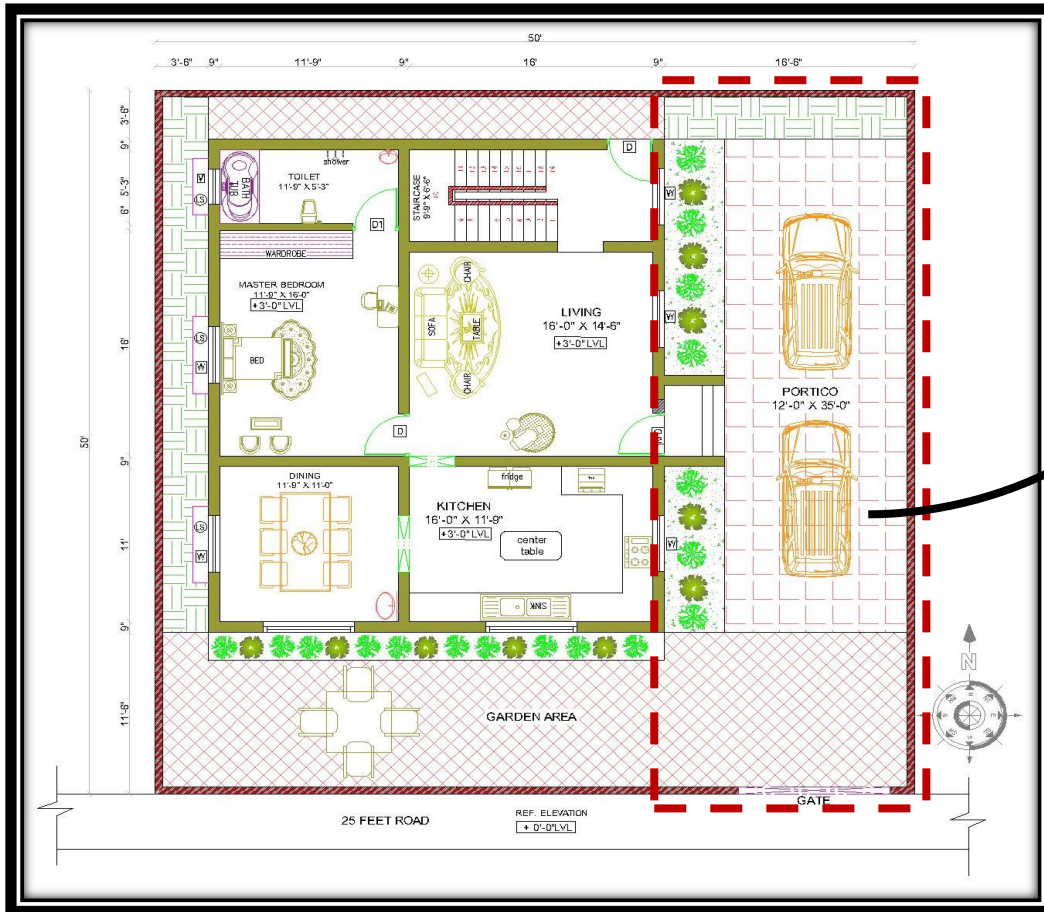
House Plan ground floors, the floors are completely utilized without wastage.

The plot size is 50'-0" x 50'-0". Total plinth area of building is 2500 sqft and The Built up area is 1650 sqft at ground floor , 1650 sqft at first floor with fully occupied floor place.

In Ground floor 1 BHK and 4 BHK in first floor independent house type. The house plans is well utilised with all utilities, staircase, balcony and well accommodating floor

GROUND FLOOR PLAN

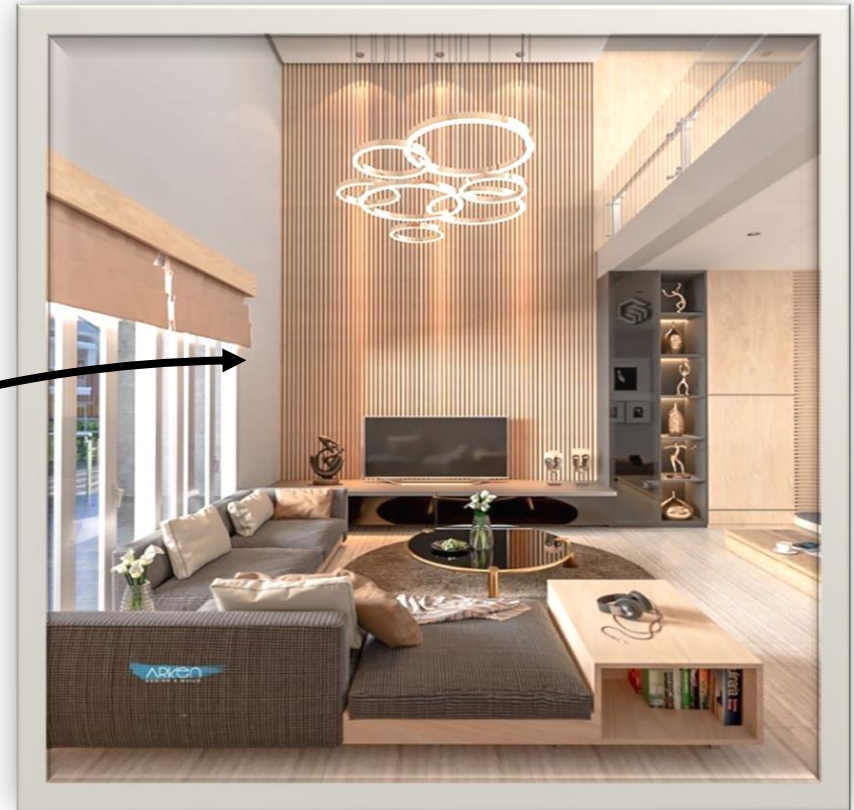
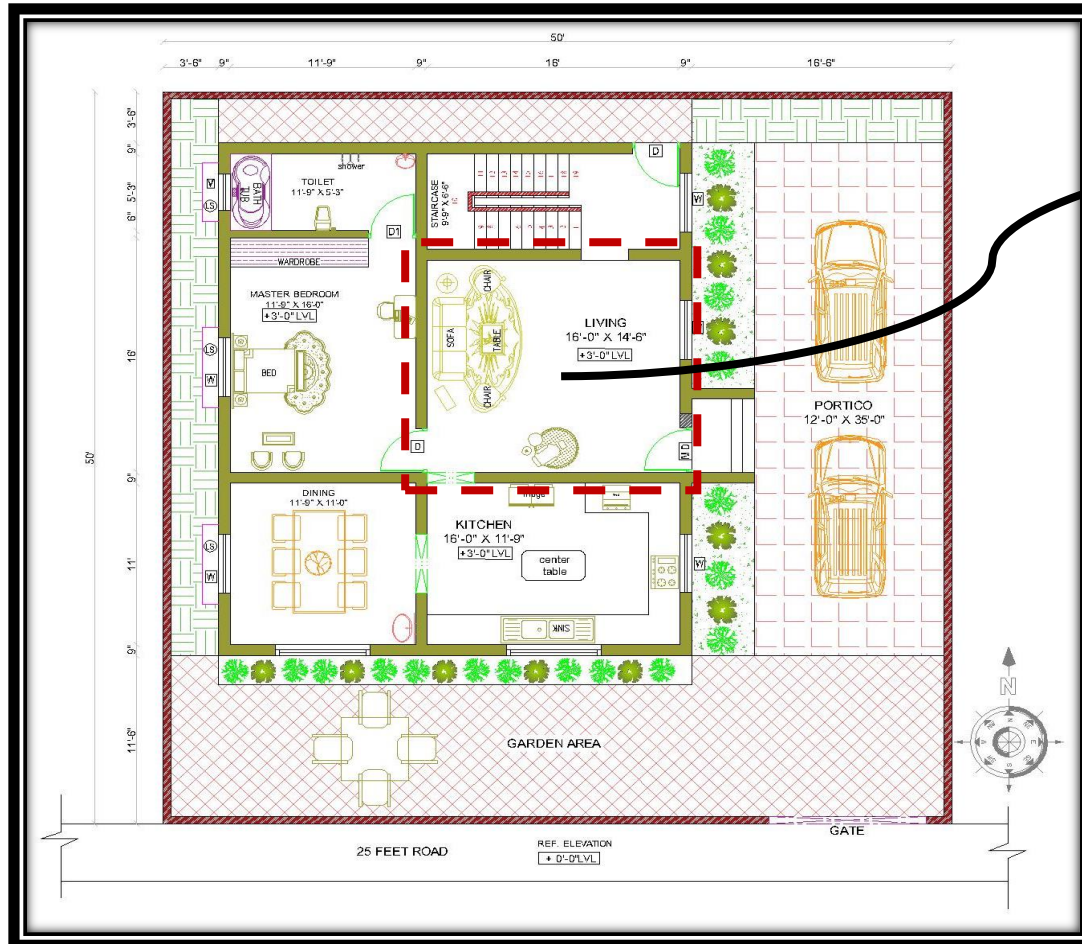
PORTICO [12'-0" X 36'-0"]



A Covered entrance or porch that extends from the main structure of a building, usually supported by columns or pillars. It often serves as a decorative feature while also providing shelter from the weather for people entering or exiting the building. Porticos are commonly found in classical architecture and can be small or grand in design, depending on the building's style.

GROUND FLOOR PLAN

LIVING [16'-0" X 14'-6"]

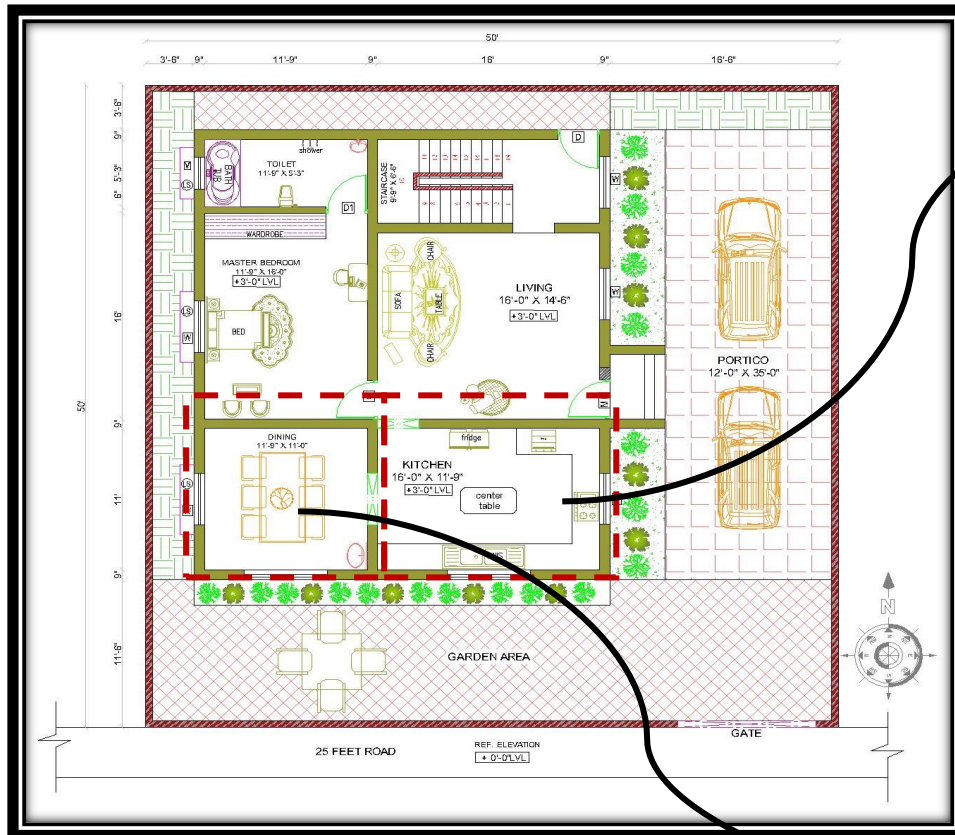


A central space in a home where people gather to relax, socialize, and spend time together. It is typically furnished with comfortable seating like sofas and chairs, and may include a TV, coffee table, and decorative items.

GROUND FLOOR PLAN

KITCHEN [16'-0" X 11'-9"]

DINING [11'-9" X 11'-0"]



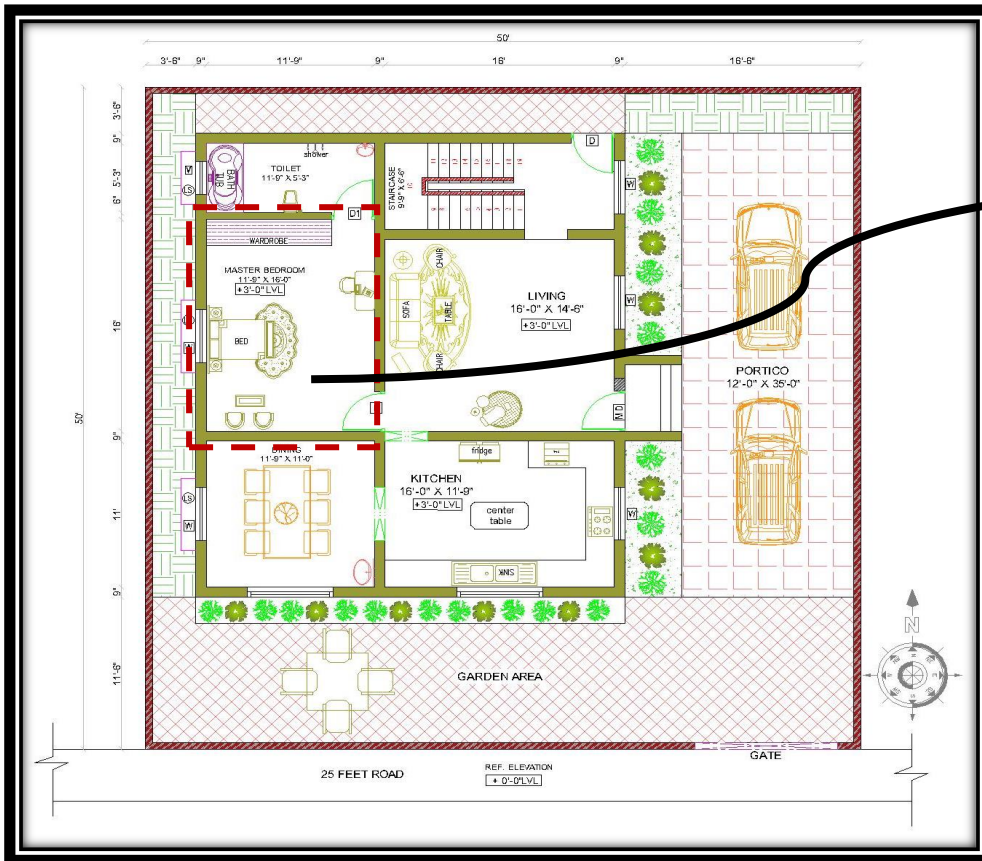
The kitchen area is equipped with appliances, countertops, and cabinets for preparing meals, while the dining area typically features a table and chairs for enjoying meals. This open-concept design promotes a seamless flow between cooking and dining, making it convenient for

family gatherings and entertaining. The layout often allows for easy communication and interaction between those cooking and those eating.



GROUND FLOOR PLAN

MASTER BEDROOM [11'-9" X 16'-0"]

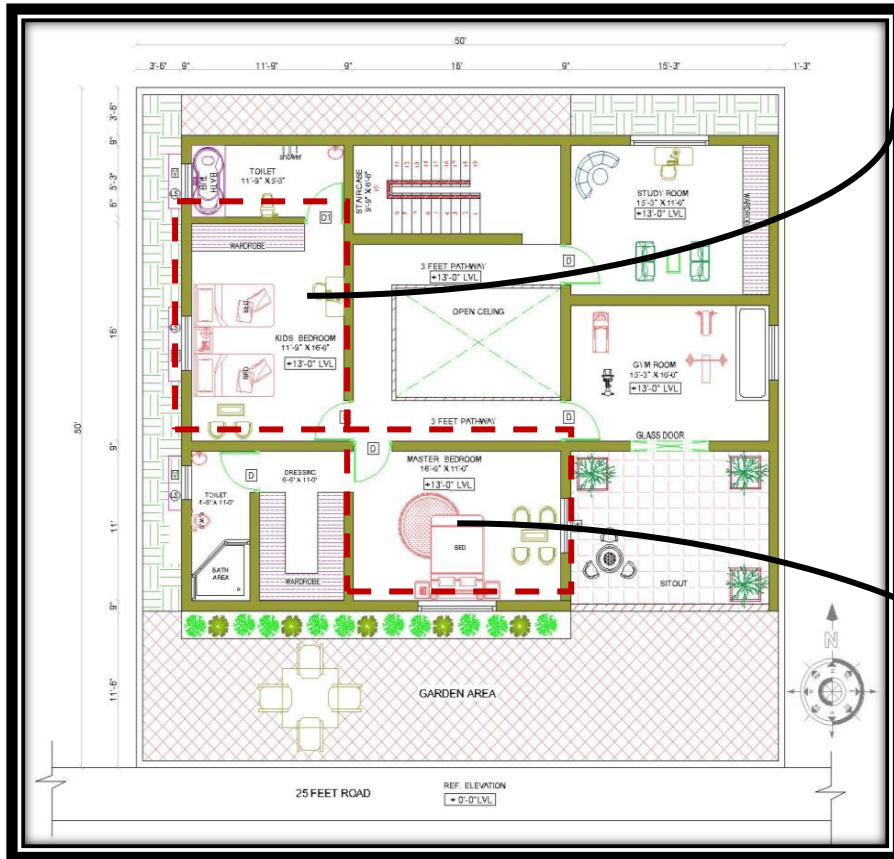


A Private room in a home where people sleep and relax. It typically contains a bed, storage furniture like dressers or wardrobes, and personal items. Bedrooms are designed to be comfortable and restful, often with soft lighting, calming colors, and cozy furnishings. The layout and decor of a bedroom can vary based on individual preferences, but its primary purpose is to provide a quiet and peaceful environment for rest.

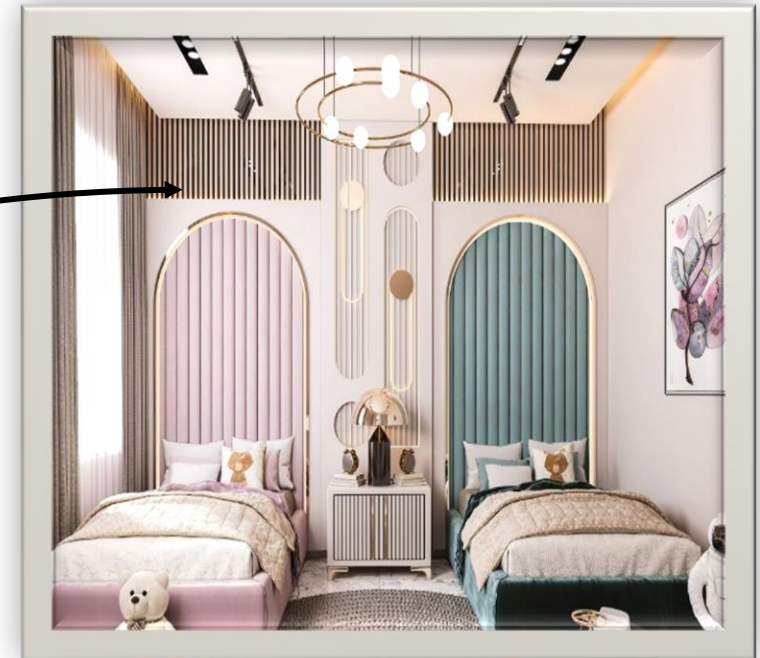
FIRST FLOOR PLAN

KIDS BEDROOM [11'-9" X 16'-0"]

BEDROOM [16'-0" X 11'-0"],



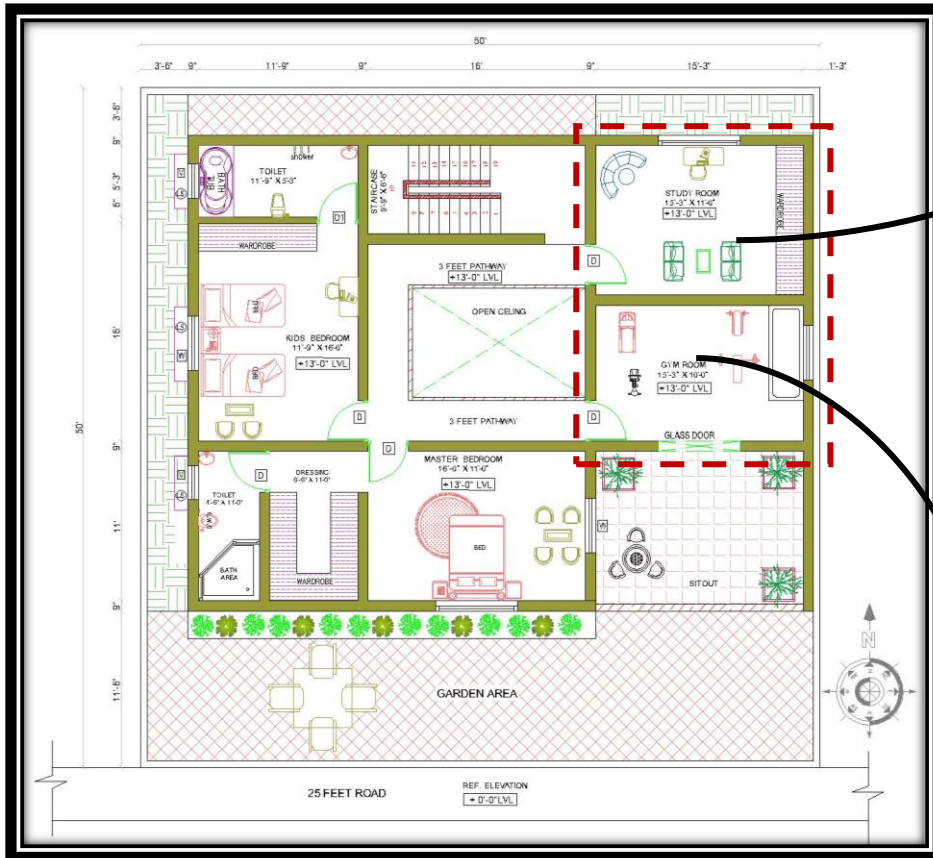
A Space designed specifically for children, tailored to their needs and preferences. It usually includes a bed, storage for toys and clothes, and areas for play and study. The design often features bright colors, playful themes, and age-appropriate furniture to create a fun and safe environment.



FIRST FLOOR PLAN

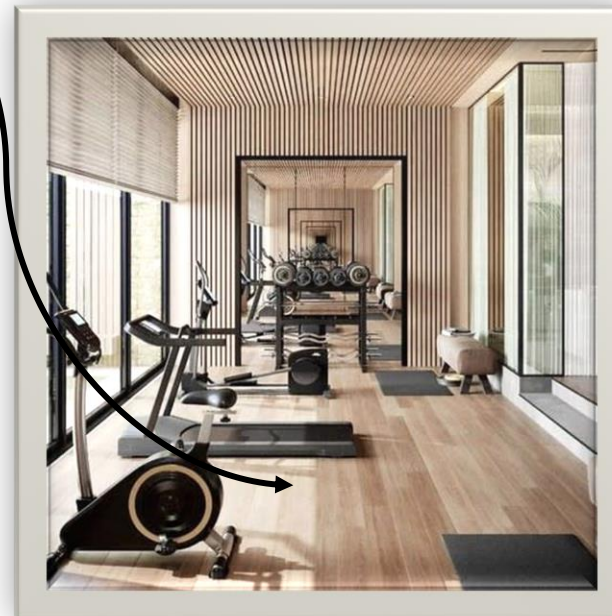
GYM ROOM [15'-3" X 10'-0"]

STUDY ROOM [15'-0" X 11'-0"]



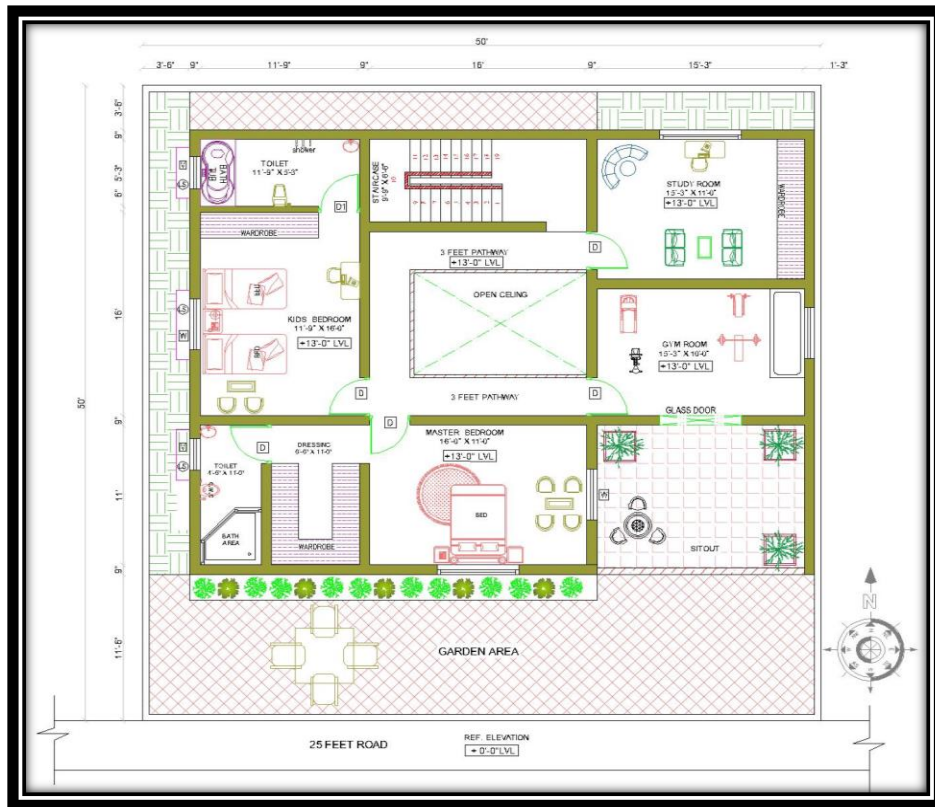
tasks. Study rooms are commonly used by professionals for productive work

A Quiet space in a home or building designed for reading, studying, or doing work. It usually has a desk, chair, bookshelves, and good lighting to create an environment that encourages focus and



concentration. The room is often organized with minimal distractions, providing a dedicated area for learning, writing, or completing students or

THE LOOK :



A Plan refers to a scaled drawing that shows one side of a building or structure from a vertical viewpoint. It provides details about the exterior appearance, including the height, design features, materials, and placement of doors, windows, and architectural elements. Elevation drawings help visualize how the building will look from the outside and are an essential part of architectural plans. They guide the construction process and ensure that the design intent is clearly communicated for each façade of the building