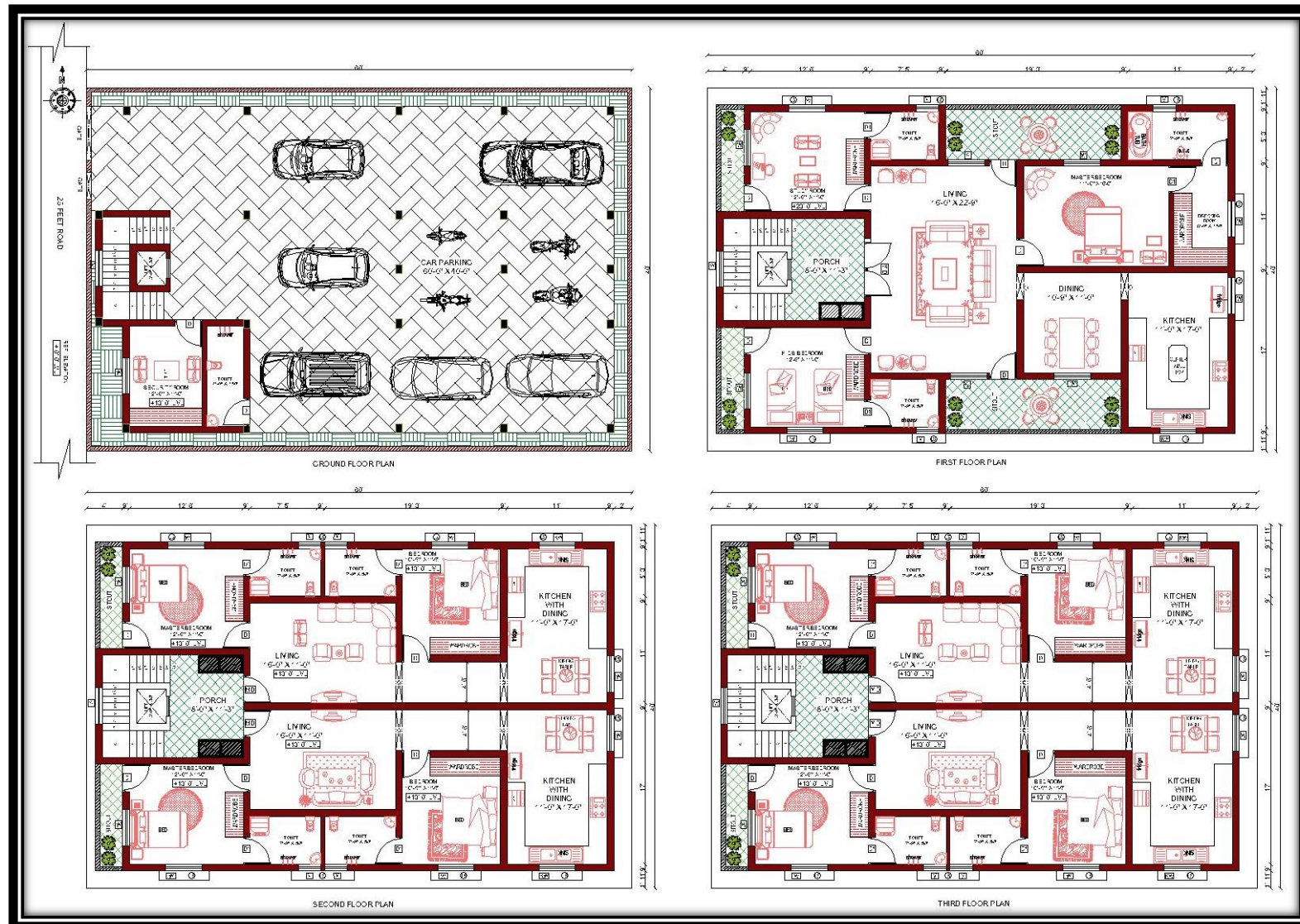
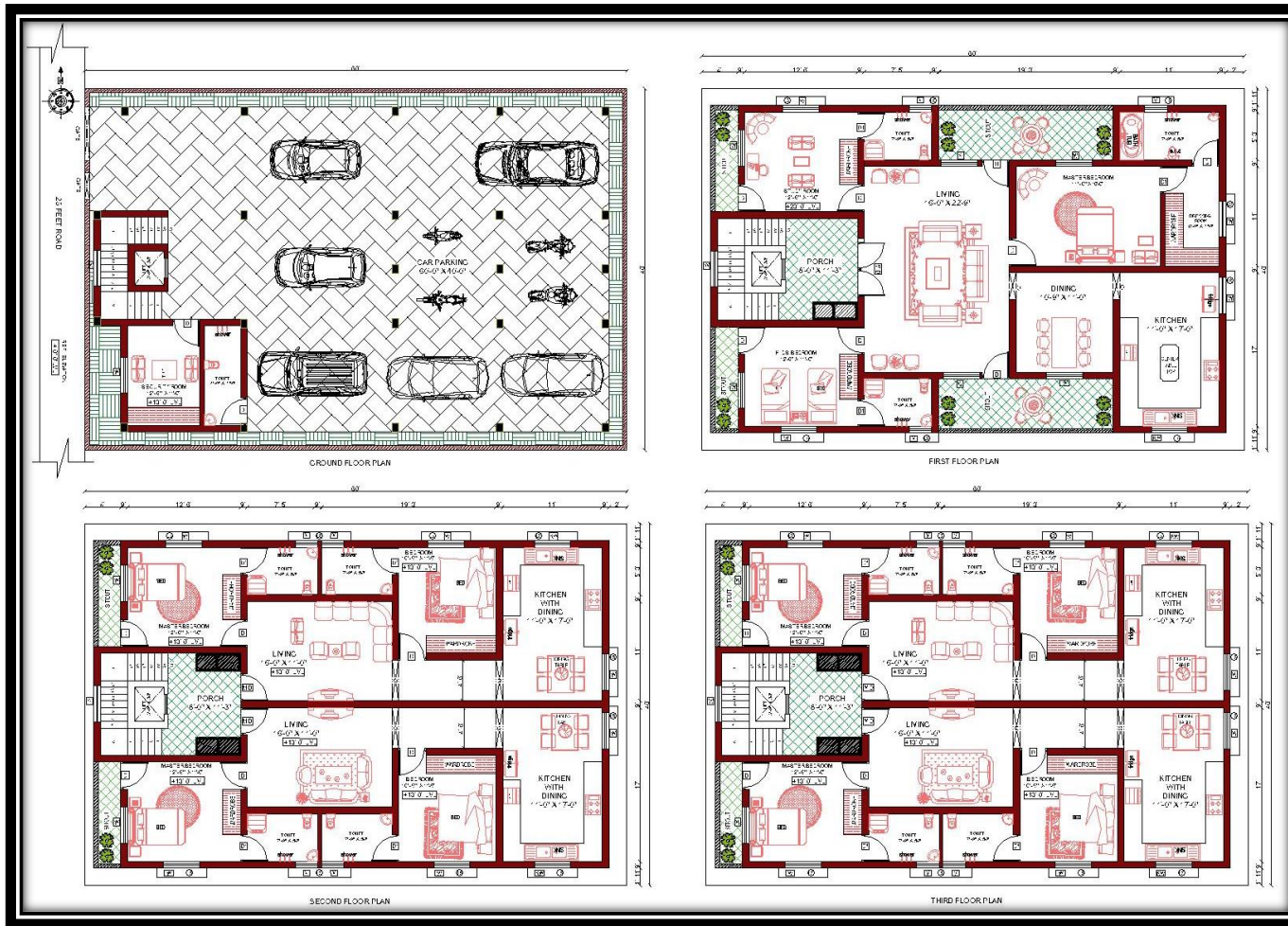


APARTMENT BUILDING GROUND FLOOR, FIRST FLOOR, SECOND FLOOR AND THIRD FLOOR PLAN



FLOOR PLAN



HOUSE PLAN 60' x 40' / EAST FACING |

House Plan ground floors, the floors are completely utilized without wastage.

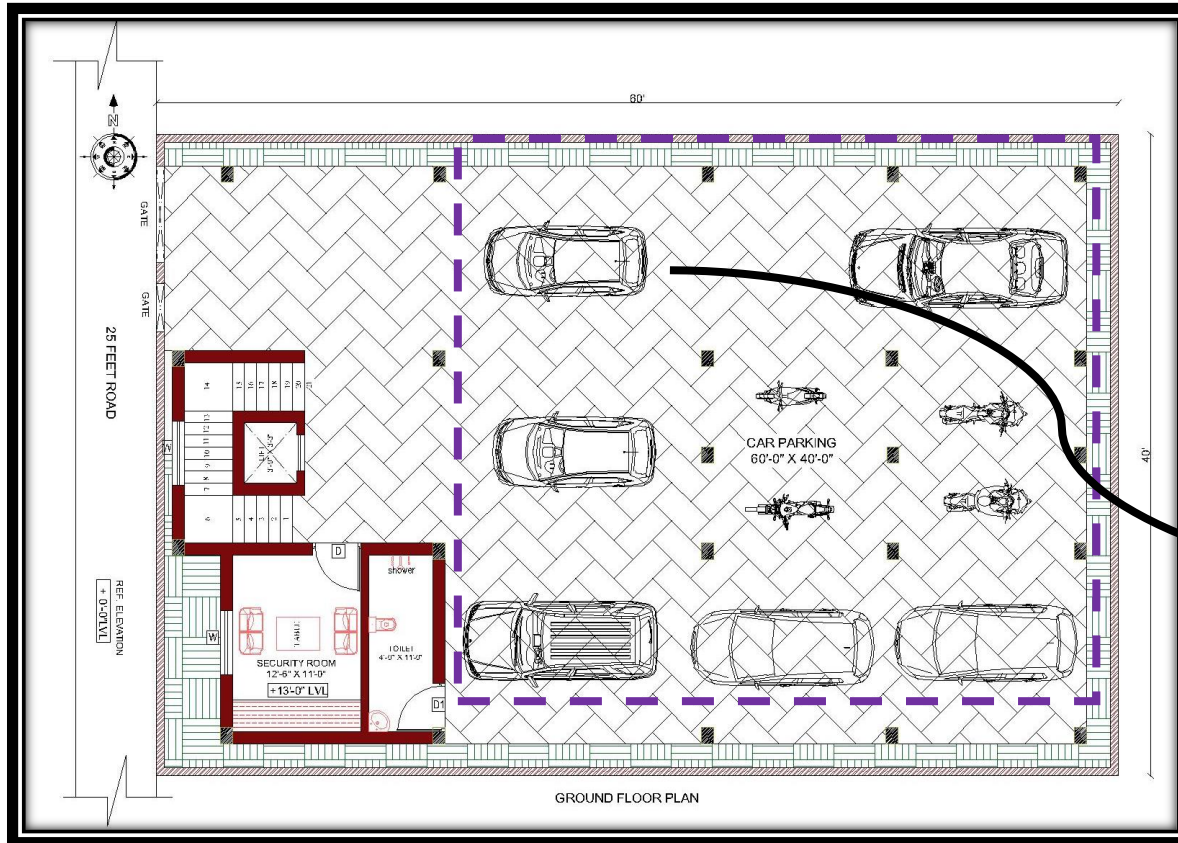
The plot size is 60 feet x 40 feet. Total plinth area of building is 2400 sqft and The Built up area is 2025 sqft at ground floor , 2070 sqft at first floor, 2070 sqft at second floor and 2070 sqft at third floor with fully occupied floor place.

In Ground floor fully car parking and 3 BHK at first floor, 2 BHK at second floor and 2 BHK in third floor apartment house type.

The house plans is well utilised with all utilities, staircase, balcony and well accommodating floor space

GROUND FLOOR PLAN

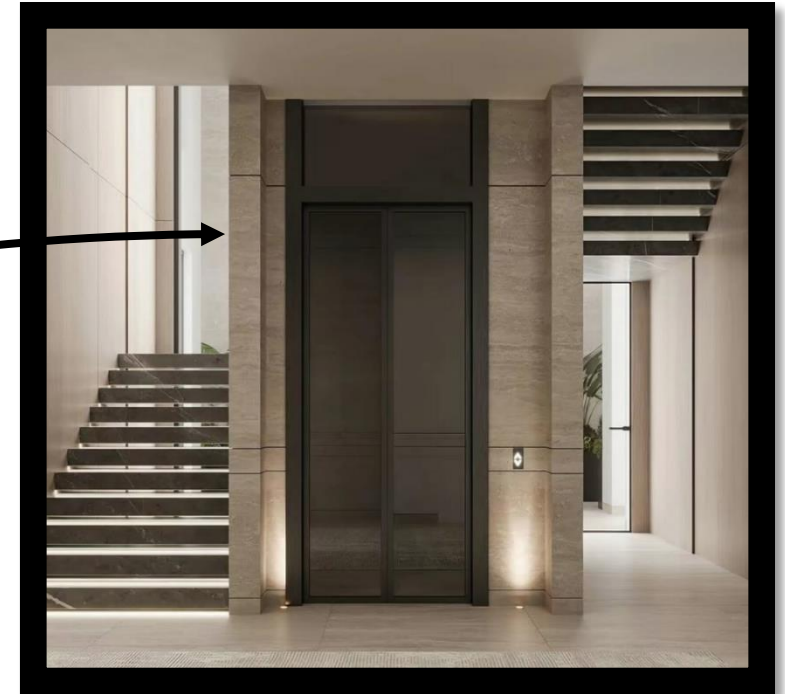
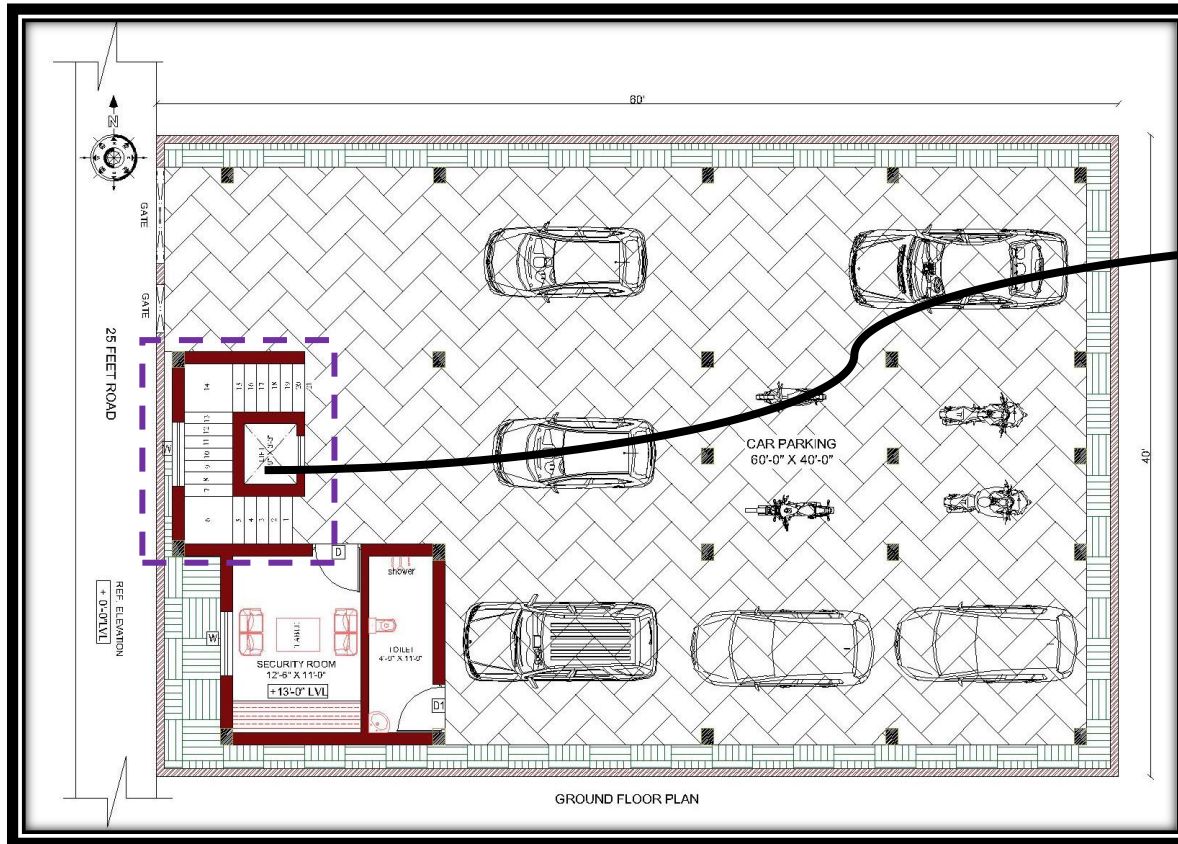
CAR PAKING [60'-0" X 40'-0"]



TRANQUIL ENTRANCE

Welcomes with soft colors, natural elements, and a minimalist design. Gentle lighting, lush greenery, and soothing scents create a calm and peaceful atmosphere, inviting serenity from the moment you step in.

GROUND FLOOR PLAN

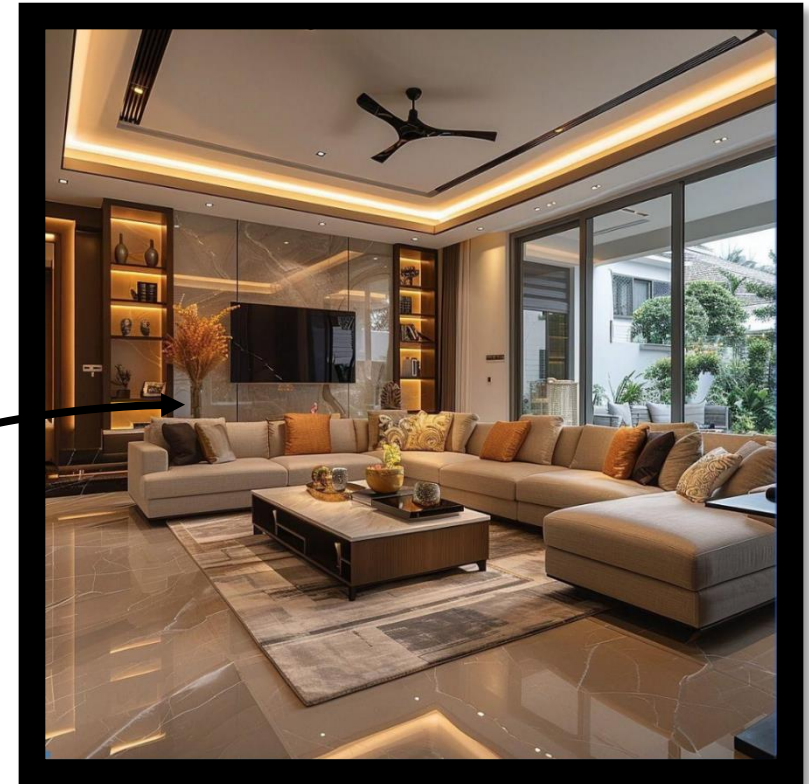
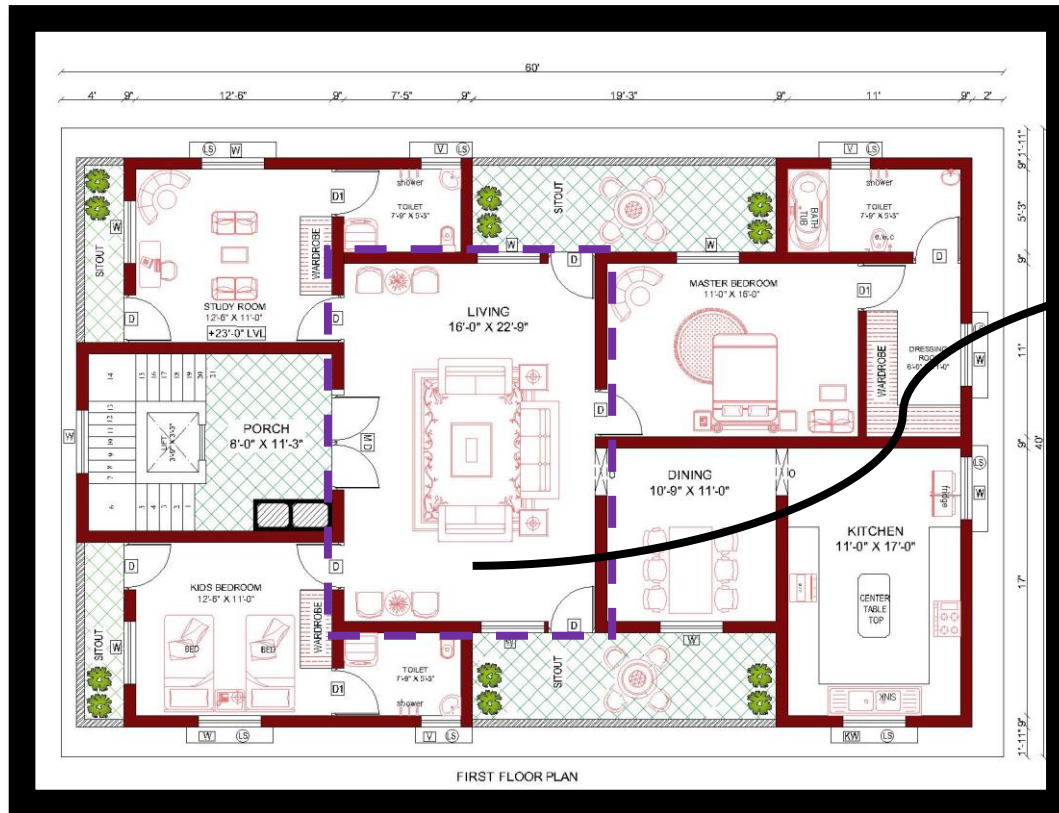


CONVENIENT ACCESS

A building or structure has both stairs and an elevator for moving between floors. The stairs are used for walking up and down, while the lift provides an alternative for those who prefer or need a mechanical means of going to different levels, like people with disabilities, those carrying heavy items, or simply for convenience.

FIRST FLOOR PLAN

LIVING ROOM [16'-0" X 22'-9"]



ENHANCED NATURAL LIGHT:

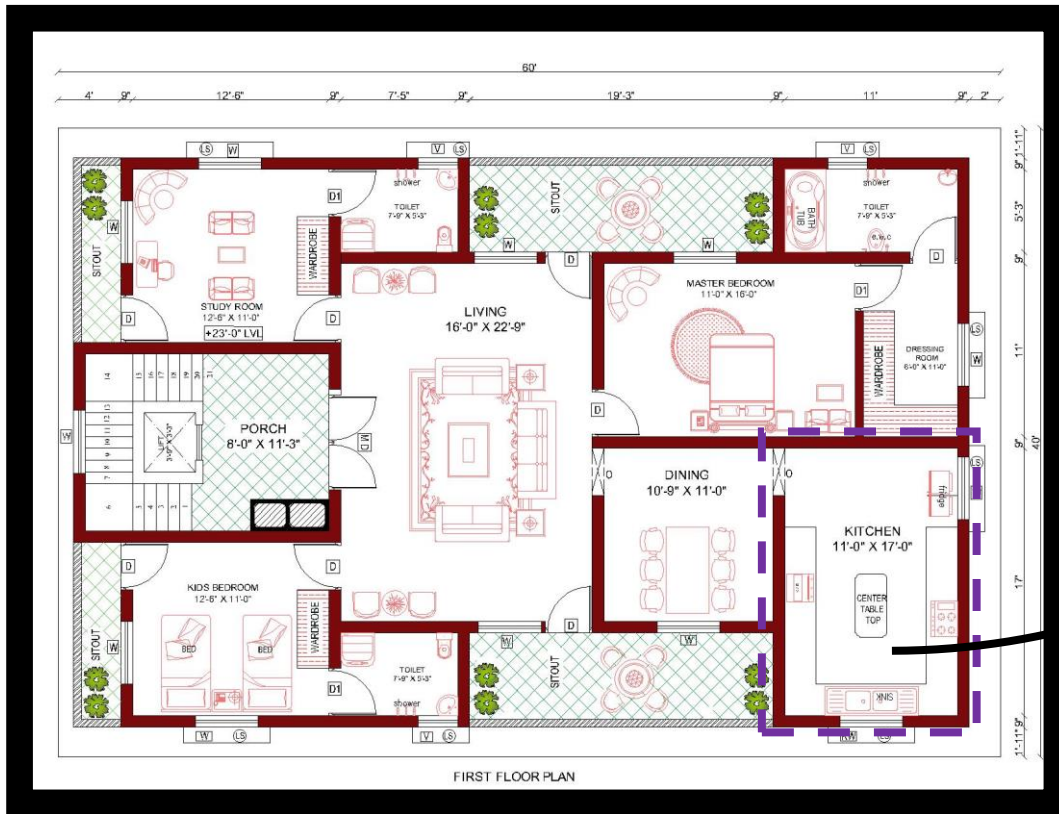
The full open window floods the space with sunlight, creating a warm, inviting ambiance while reducing the need for artificial lighting during the day.

EFFORTLESS TRANSITION:

The connection between the dining and living areas forms a cohesive and practical layout, perfect for daily use and entertaining

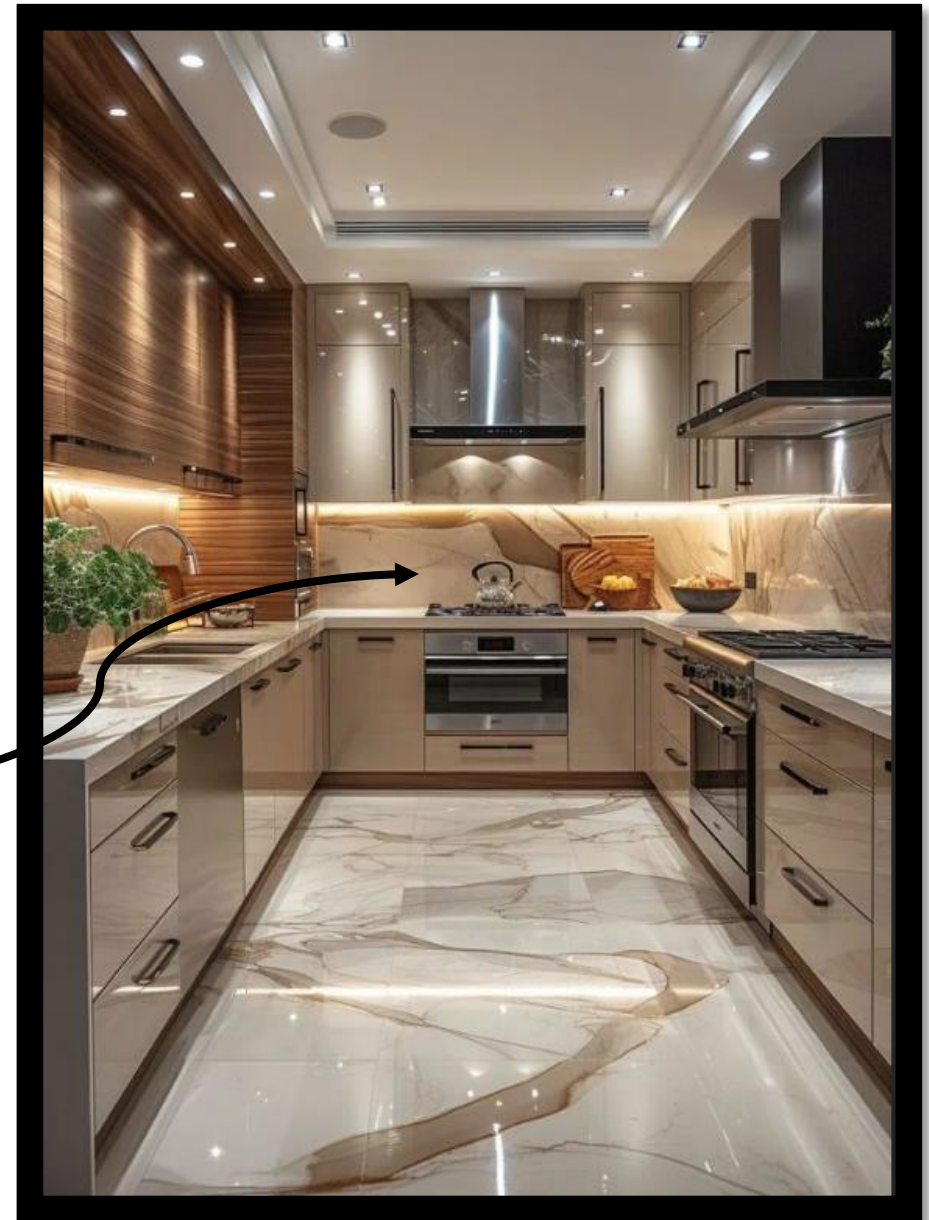
FIRST FLOOR PLAN

KITCHEN [11'-0" X 17'-0"]



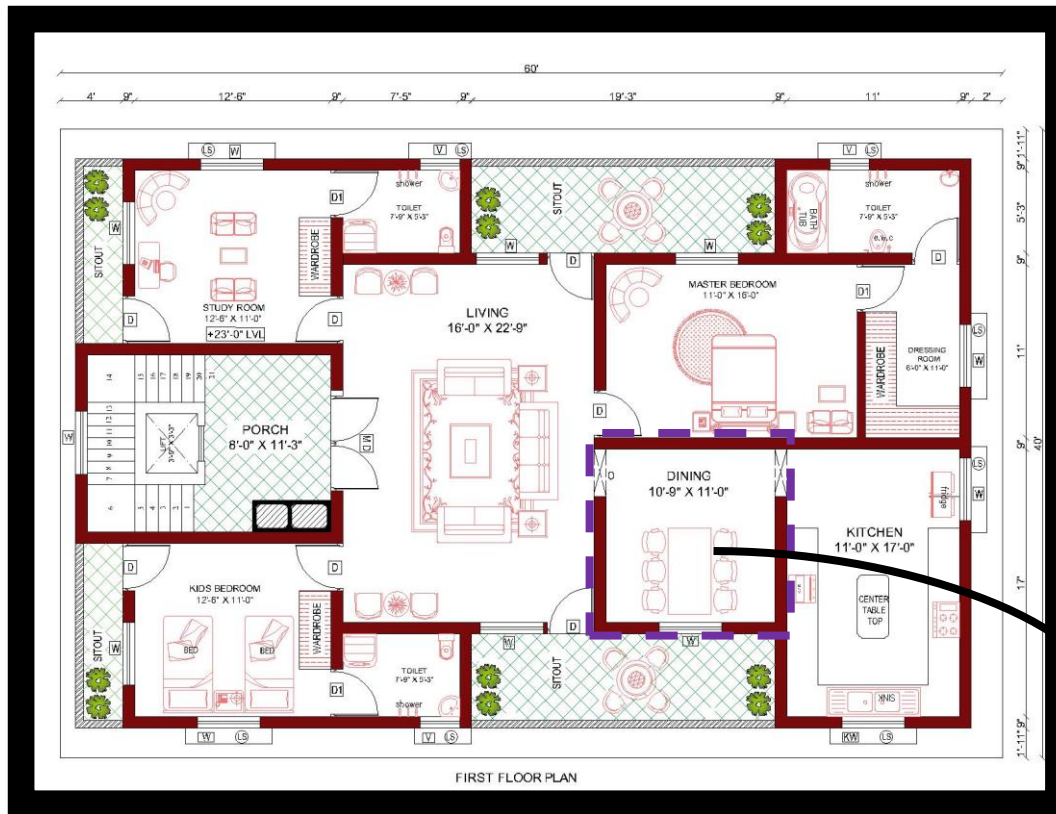
CLEANING & MAINTENANCE:

Dishwashing and washing machines are provided a separate utility space to facilitate smooth functioning of the kitchen.



FIRST FLOOR PLAN

DINING ROOM [10'-9" X 11'-0"]



COMFORTABLE SPACE

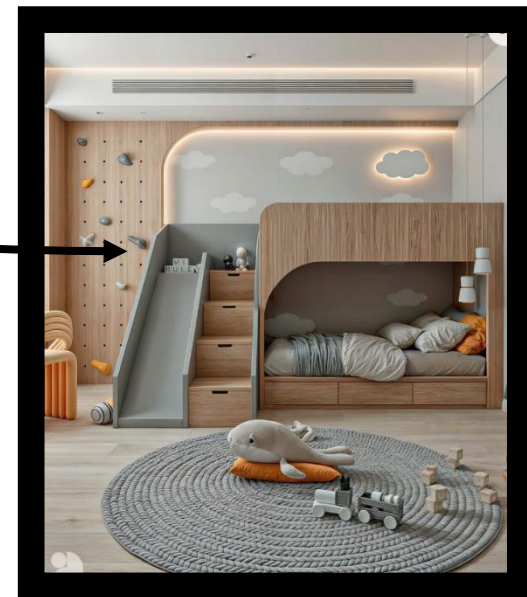
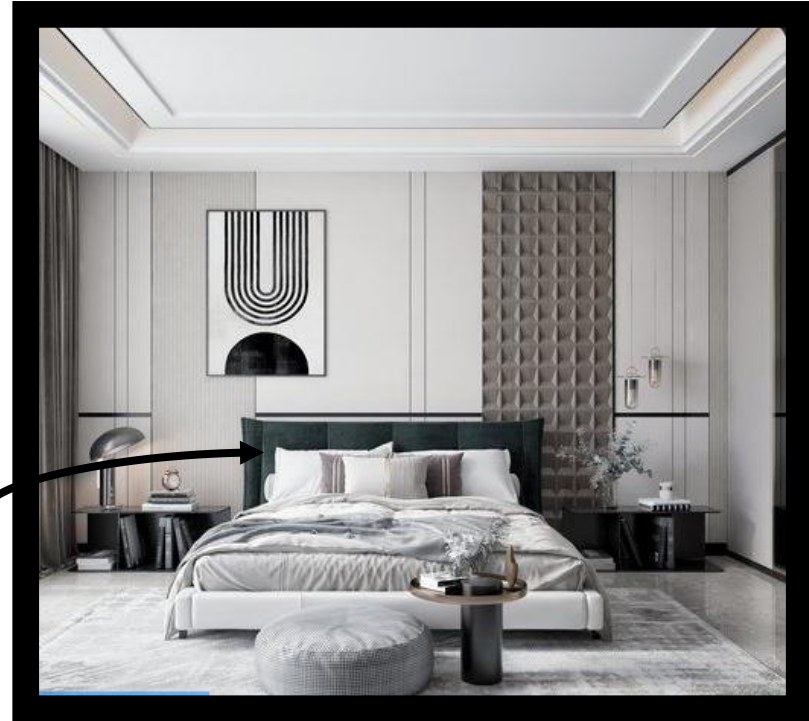
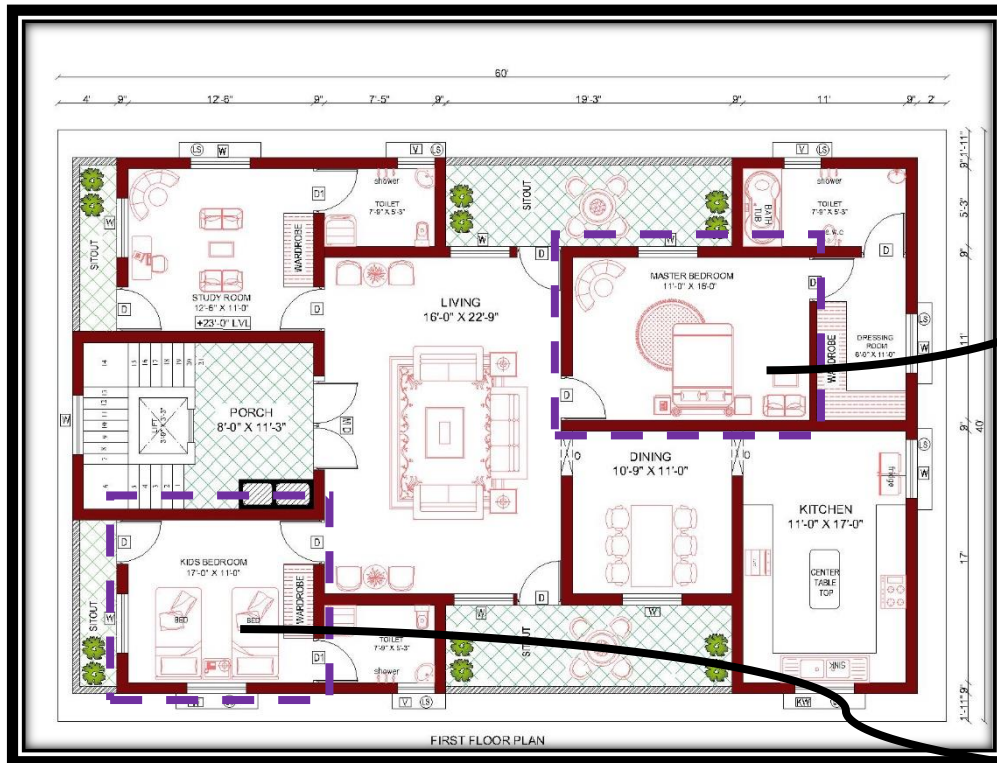
Designed for enjoying meals with family and friends. It offers a cozy and welcoming atmosphere, perfect for everyday dining or special gatherings



FIRST FLOOR PLAN

MASTER BEDROOM [11'-0" X 16'-0"]

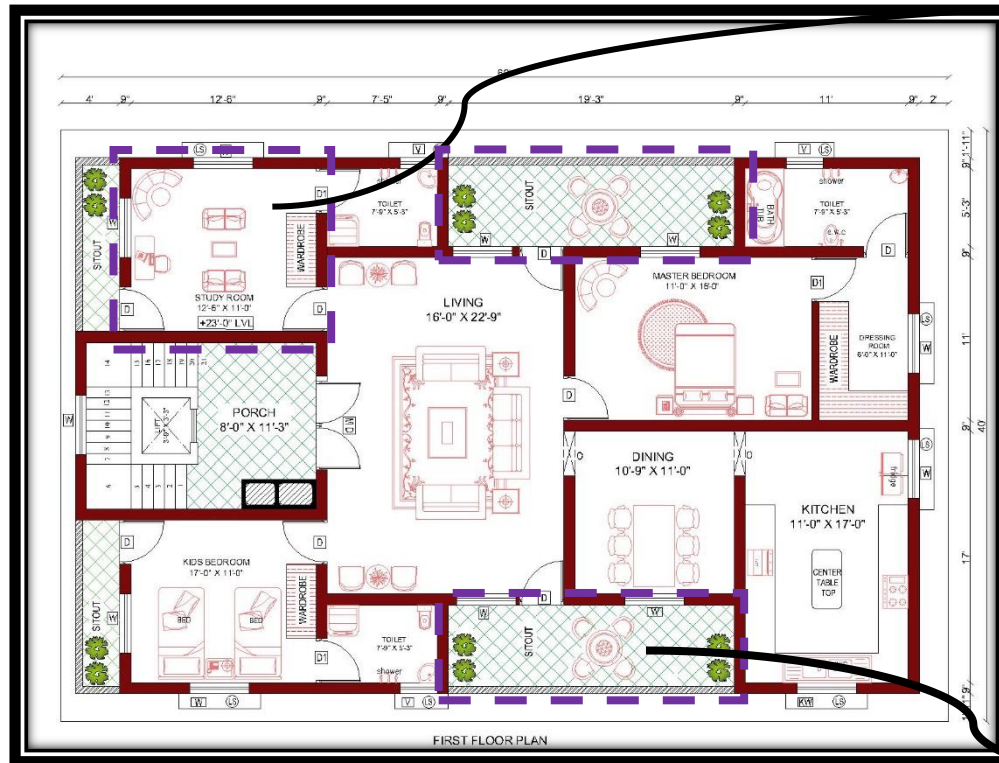
KIDS BEDROOM [12'-6" X 11'-0"]



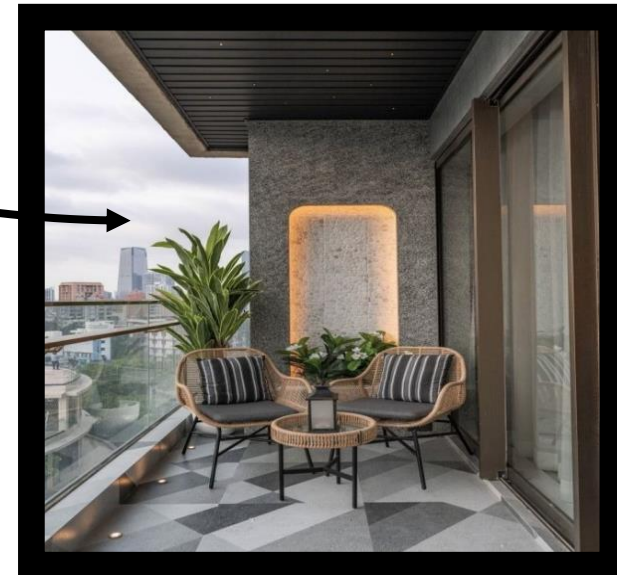
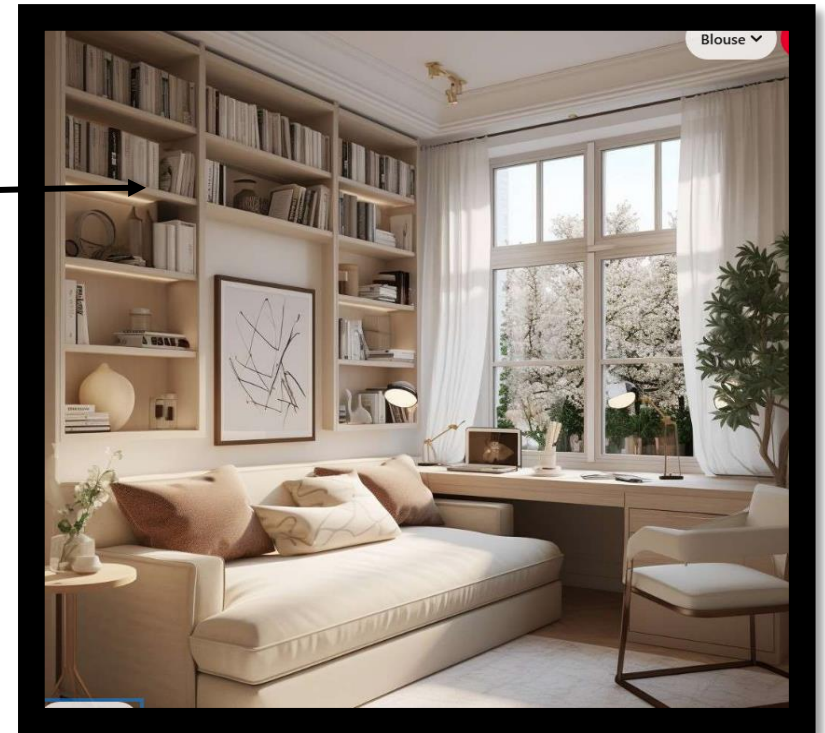
Energy Efficiency: The bedroom is designed with energy-saving features such as proper insulation, energy-efficient windows, and smart lighting, helping to maintain a comfortable temperature and reduce energy consumption

FIRST FLOOR PLAN - SITOUT

STUDY ROOM [12'-6" X 11'-0"]

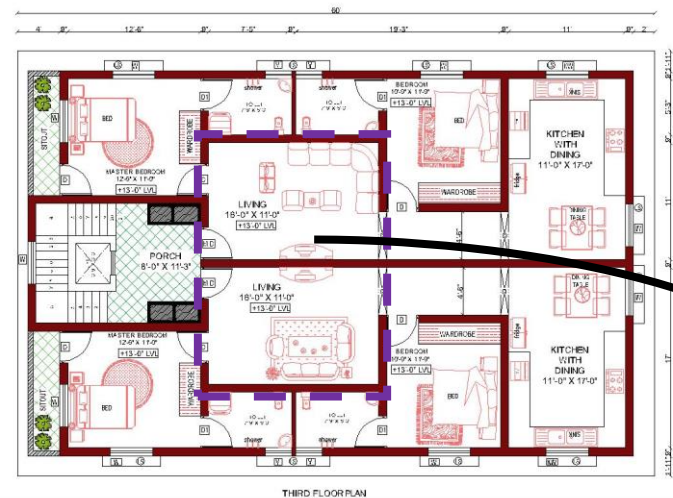
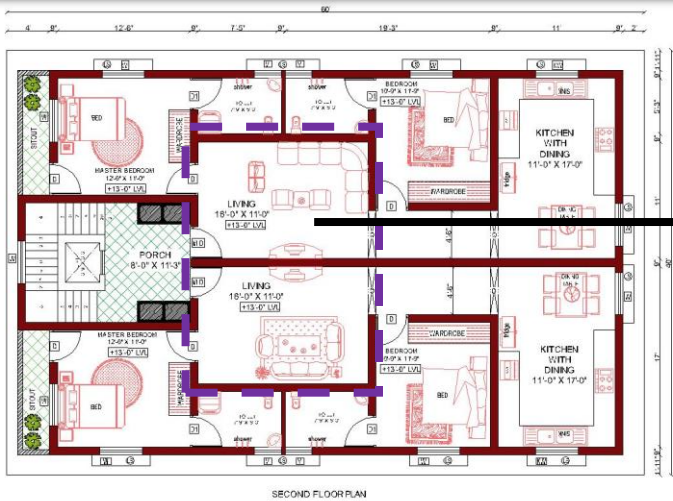


Ensure proper air circulation in the bedroom by opening windows regularly, using ceiling fans or air purifiers, and keeping vents clear. Good airflow helps maintain a fresh, comfortable, and healthy environment for better sleep and relaxation.

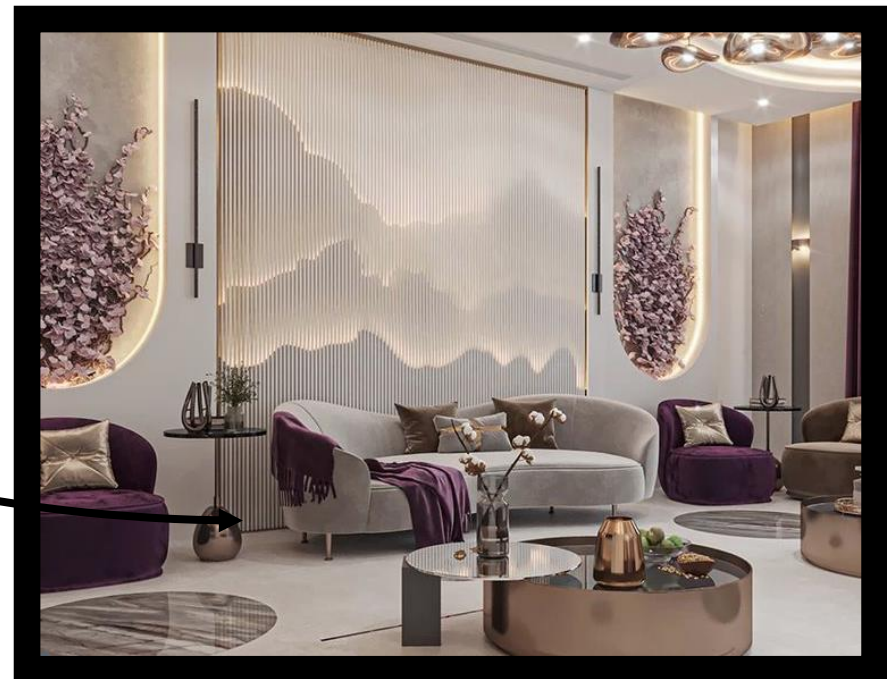


SECOND & THIRD FLOOR PLAN

LIVING ROOM [16'-0" X 11'-0"]

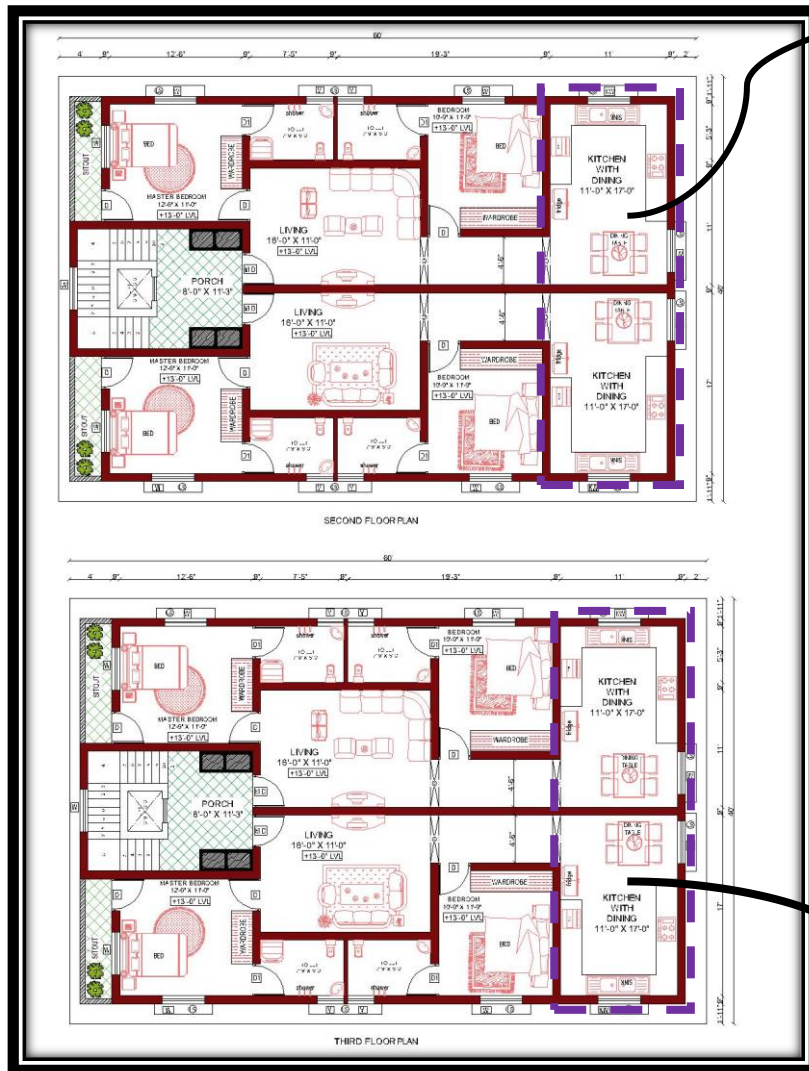


A living room is a common area in a home where people relax, socialize, and spend time together. It often has comfortable seating like sofas, chairs, and may include a TV, coffee table, and other decorative items. It's a central space for activities like watching TV, reading, or entertaining guests.



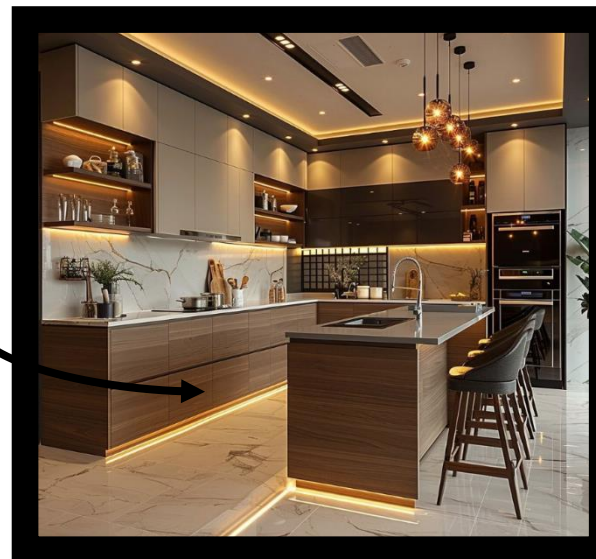
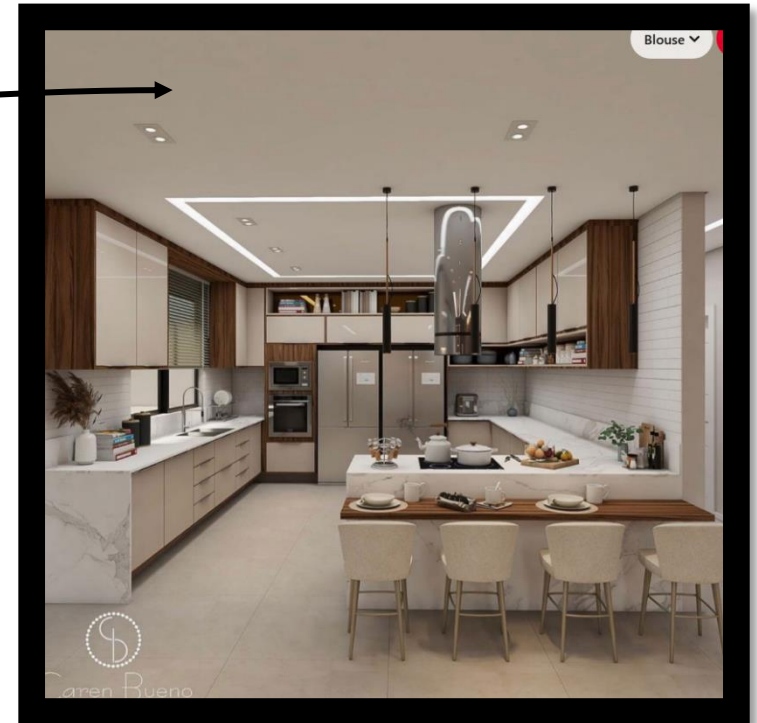
SECOND & THIRD FLOOR PLAN

KITCHEN WITH DINING [11'-0" X 17'-0"]



Cleaning and Maintenance

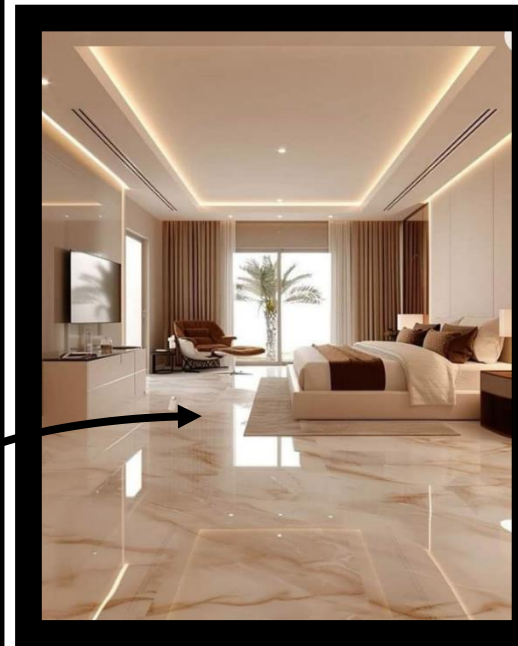
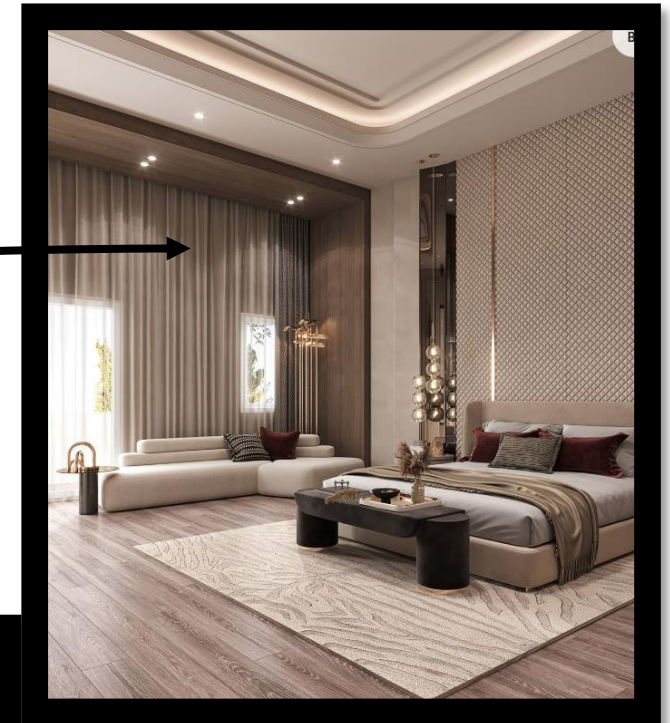
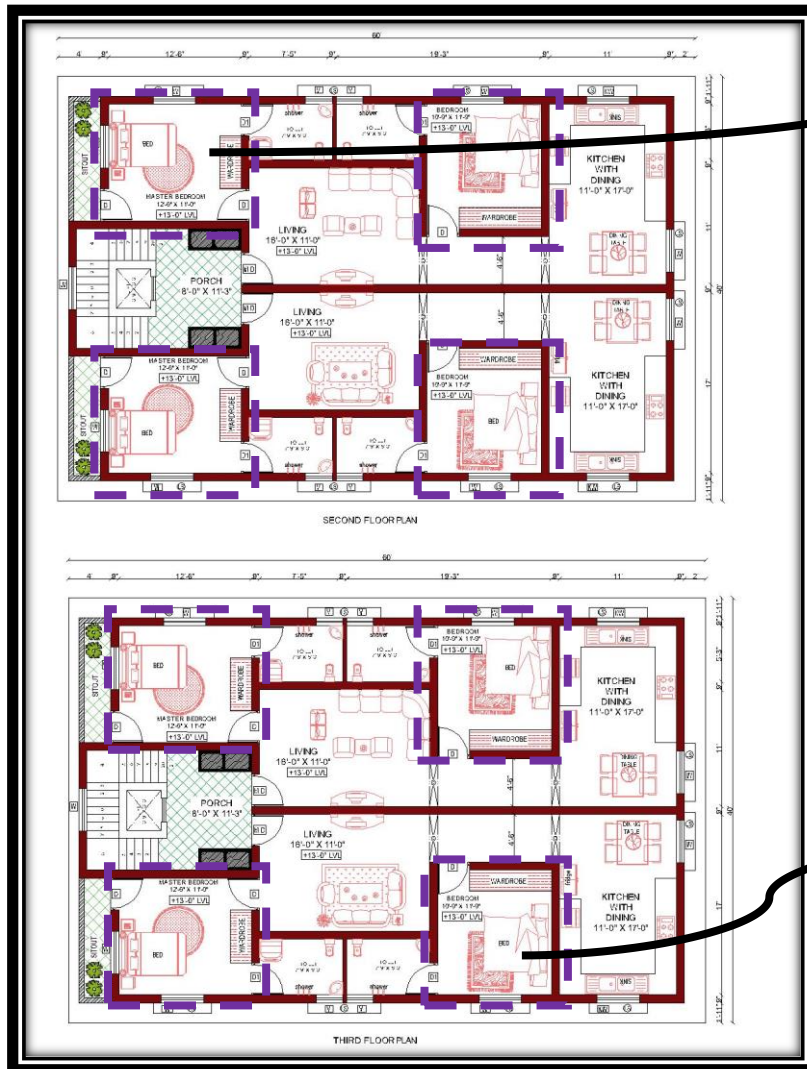
Maintain a clean and efficient kitchen and dining area by wiping surfaces daily, sweeping or mopping floors, and promptly washing dishes. Regularly clean appliances, address spills immediately, and keep countertops clutter-free to enhance efficiency and ensure a hygienic, organized space



SECOND & THIRD FLOOR PLAN

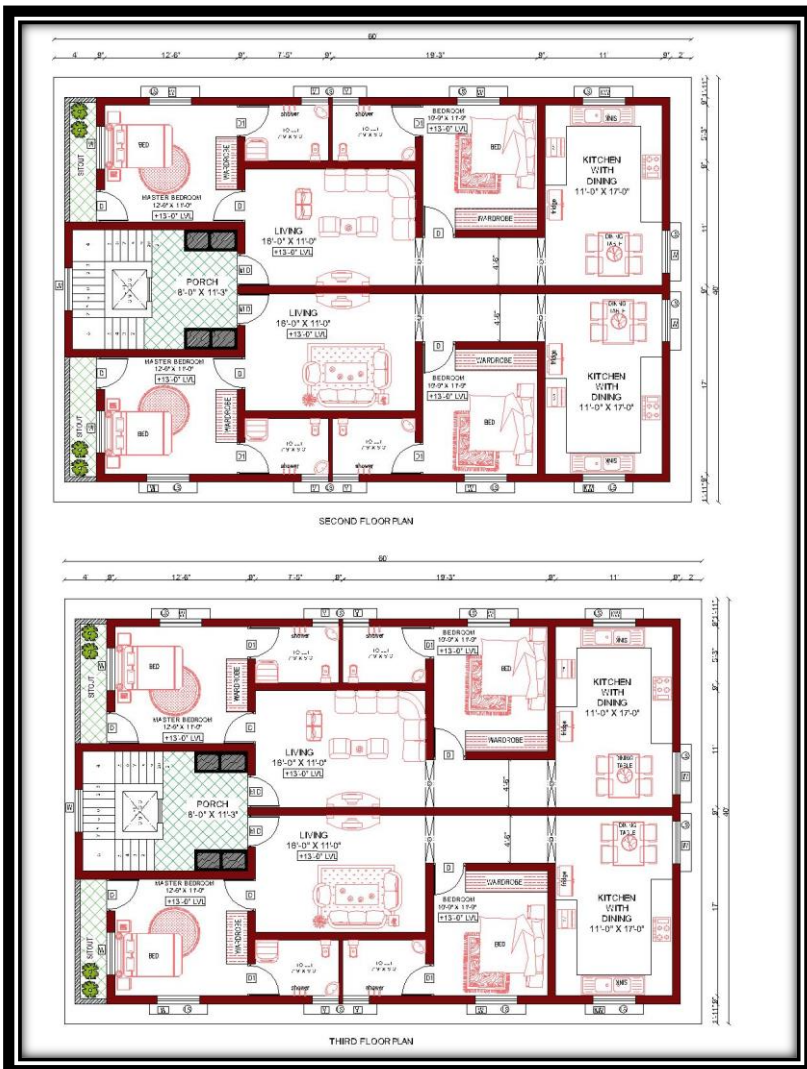
MASTER BEDROOM [12'-6" X 11'-0"]

BEDROOM [10'-9" X 11'-9"]



Ensure proper air circulation in the bedroom by opening windows regularly, using ceiling fans or air purifiers, and keeping vents clear. Good airflow helps maintain a fresh, comfortable, and healthy environment for better sleep and relaxation.

SECOND & THIRD FLOOR PLAN



THE LOOK :

The elevation look should feature clean lines, balanced proportions, and a harmonious blend of materials like stone, wood, or glass. Large windows, simple textures, and thoughtful lighting can add elegance, while natural elements and subtle details give it character and charm.

