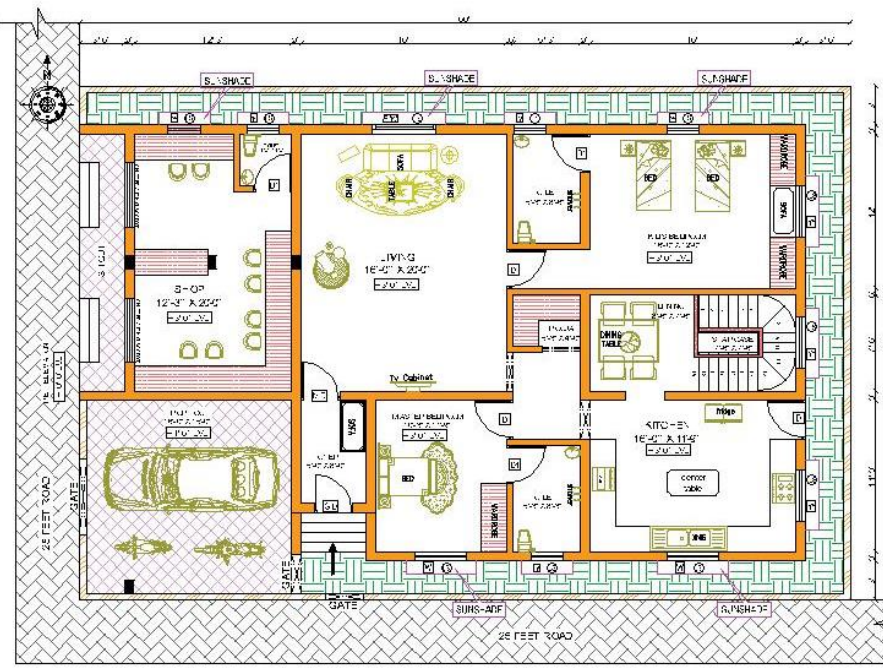
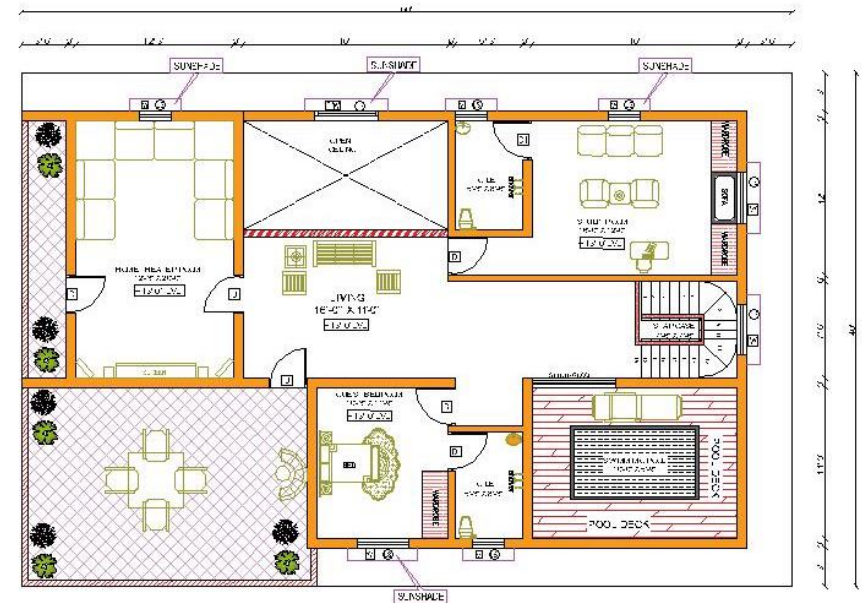


GROUND FLOOR AND FIRST FLOOR PLAN



GROUND FLOOR PLAN



FIRST FLOOR PLAN

FLOOR PLAN

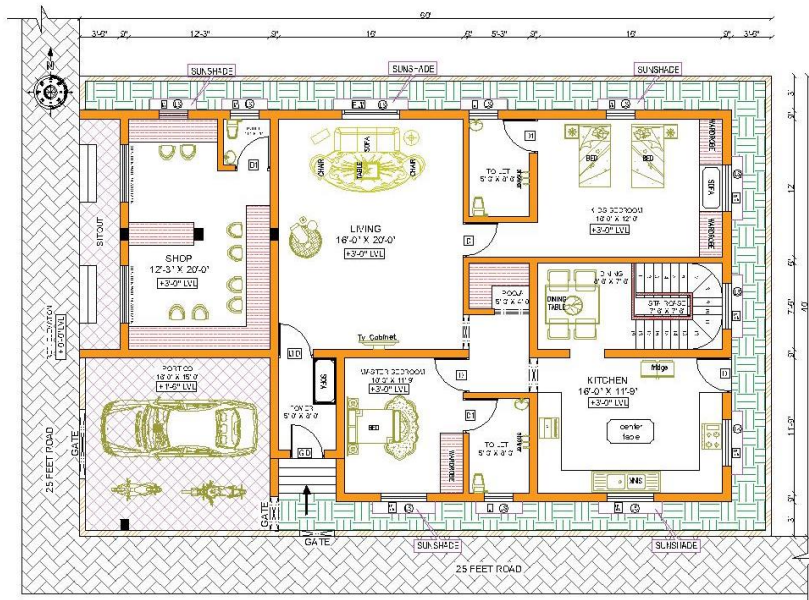
HOUSE PLAN 60' x 40' / SOUTH FACING |

House Plan ground floors, the floors are completely utilized without wastage.

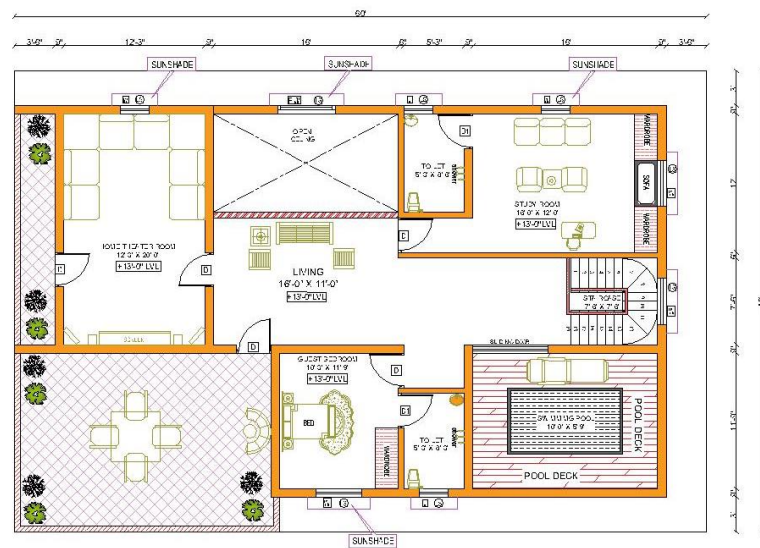
The plot size is 60 feet x 40 feet. Total plinth area of building is 2400 sqft and The Built up area is 2000 sqft at ground floor , 2000 sqft at first floor with fully occupied floor place.

In Ground floor 2 BHK and 3 BHK in first floor independent house type.

The house plans is well utilised with all utilities, staircase, balcony and well accommodating floor space.



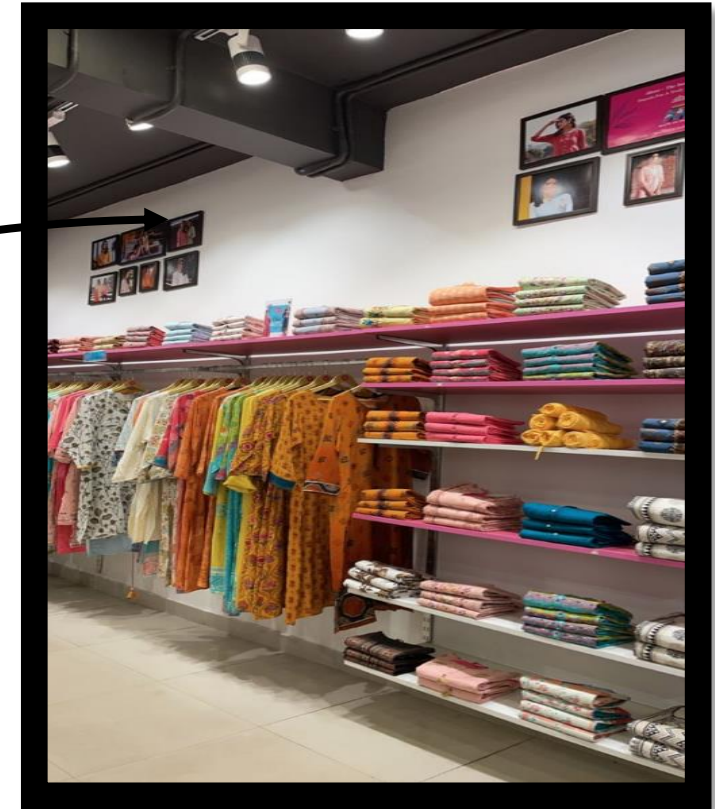
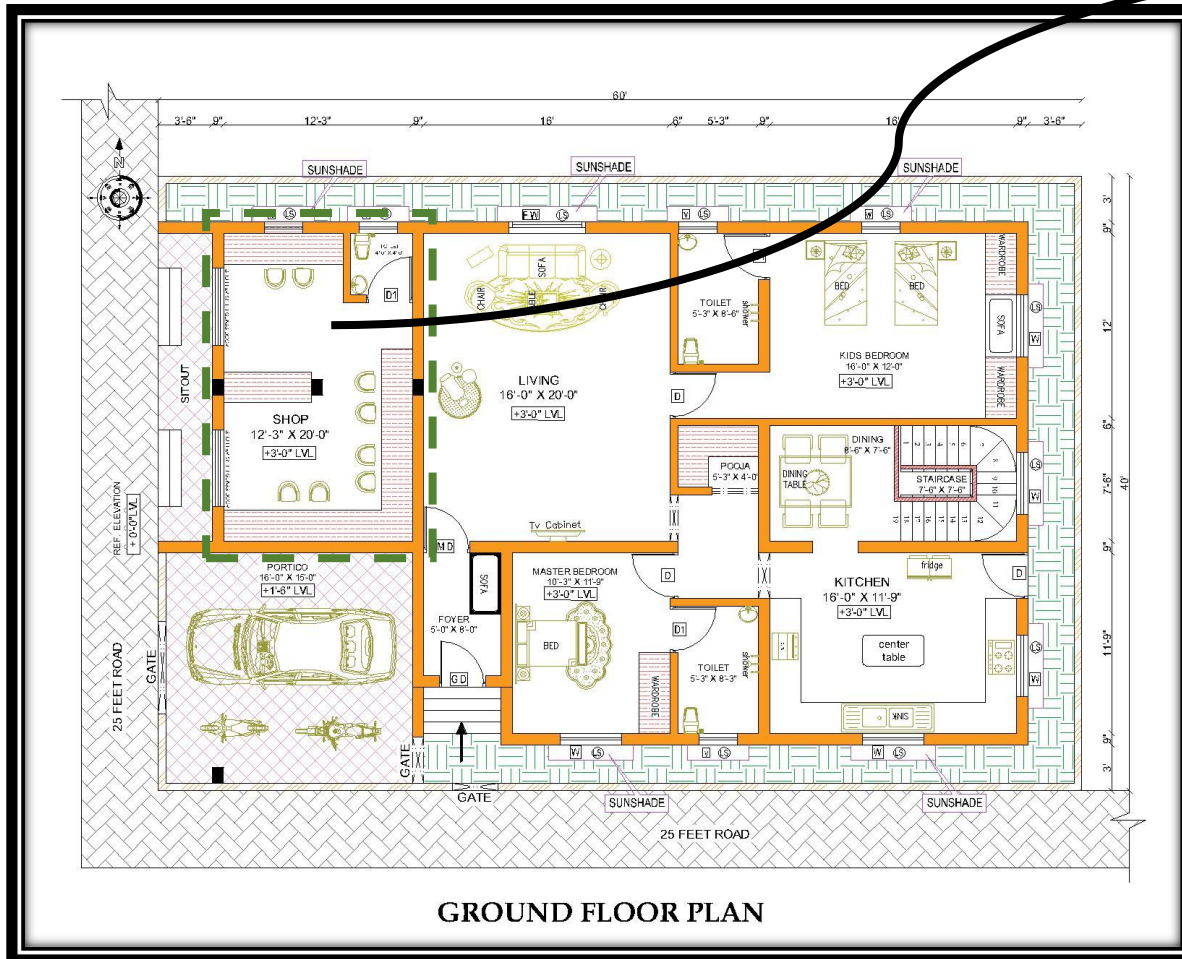
GROUND FLOOR PLAN



FIRST FLOOR PLAN

GROUND FLOOR PLAN

SHOP [12'-3" X 20'-0"]

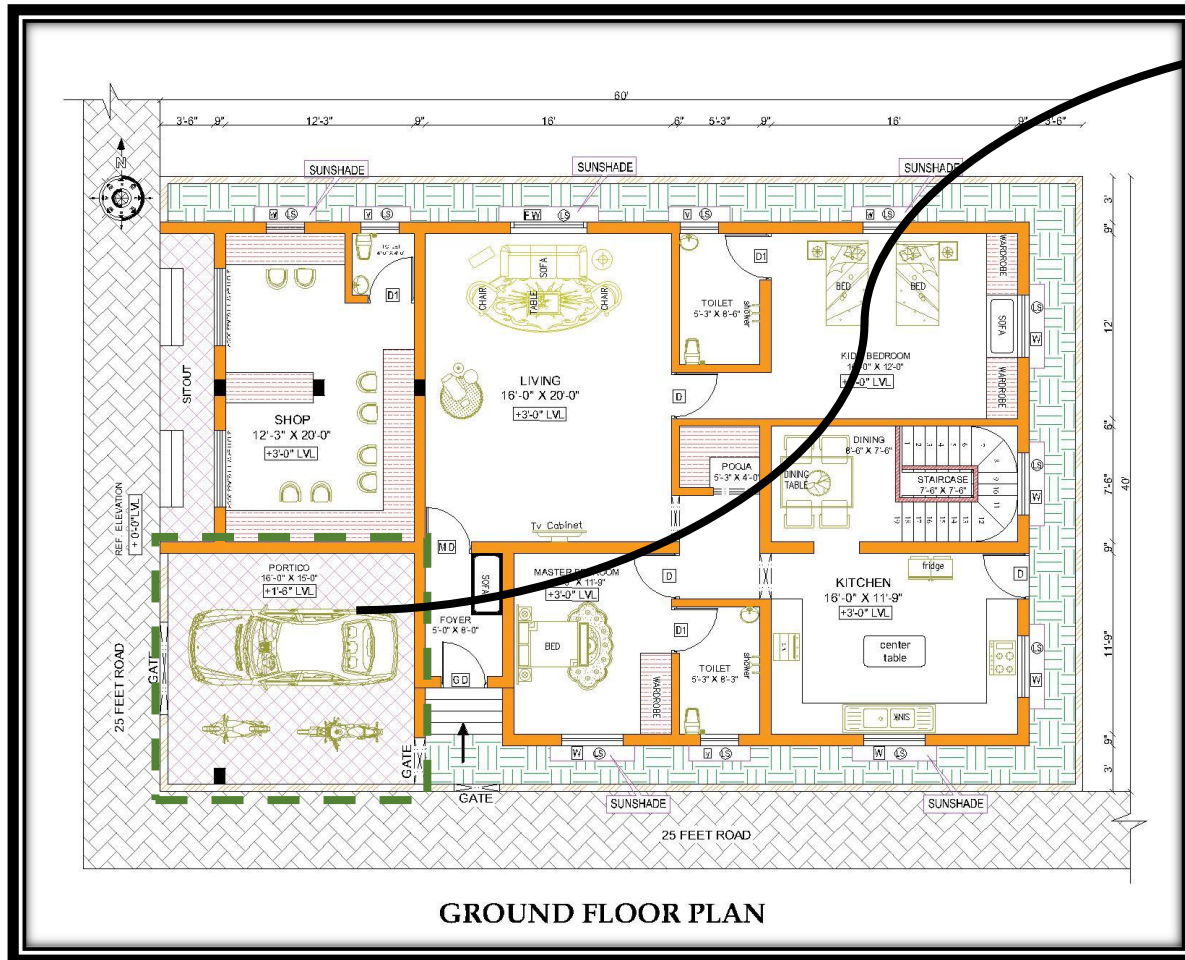


COMMERCIAL SPACE

A place where goods are sold to customers. It can be a small store or part of a larger building, and it typically has space to display products for sale. Shops offer various items such as clothing, food, electronics, and more.

GROUND FLOOR PLAN

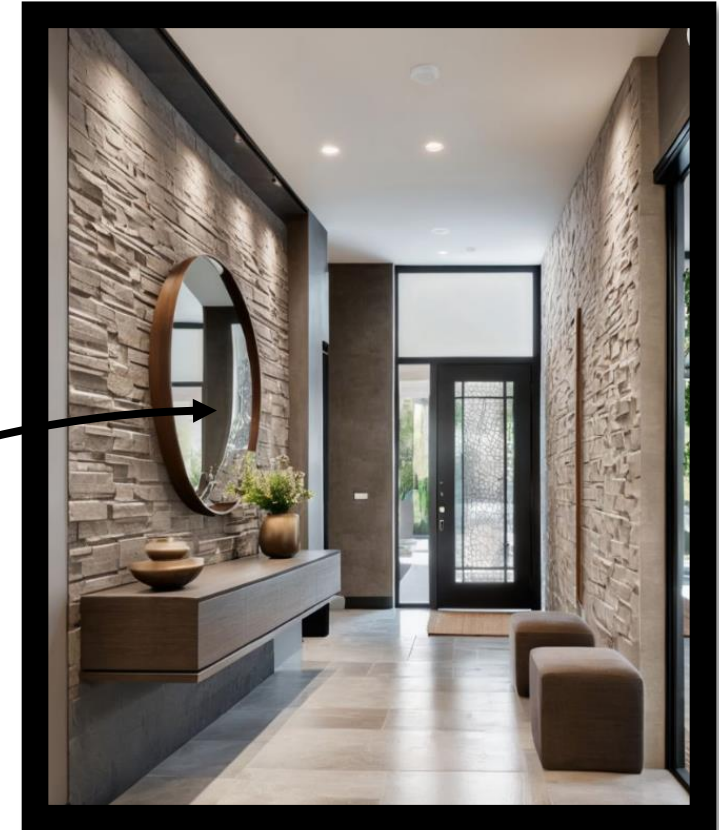
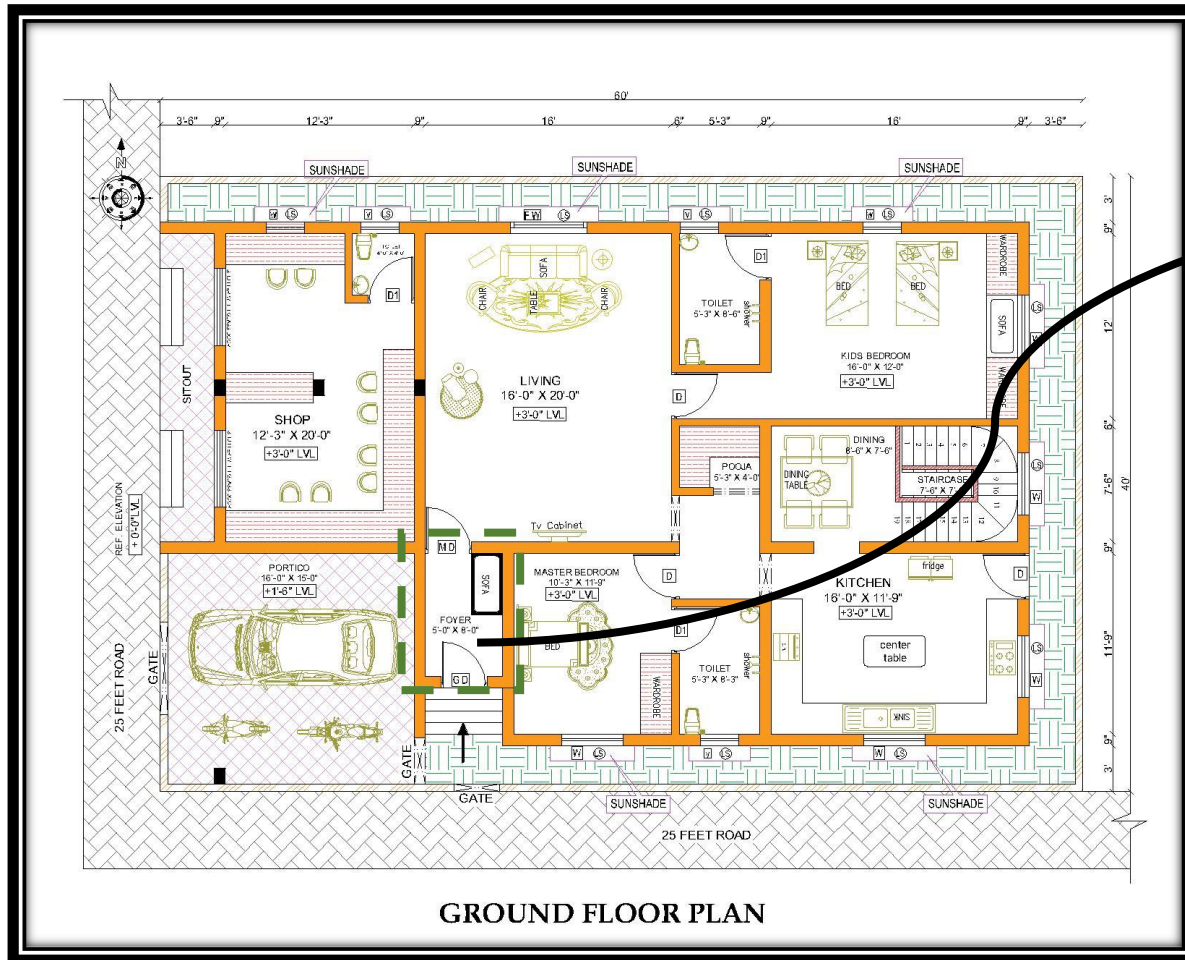
PORTICO [16'-0" X 15'-0"]



A Covered entrance or porch that extends from the main structure of a building, usually supported by columns or pillars. It often serves as a decorative feature while also providing shelter from the weather for people entering or exiting the building. Porticos are commonly found in classical architecture and can be small or grand in design, depending on the building's style. They add aesthetic appeal while offering practical functionality as a transitional space between the outdoors and indoors

GROUND FLOOR PLAN

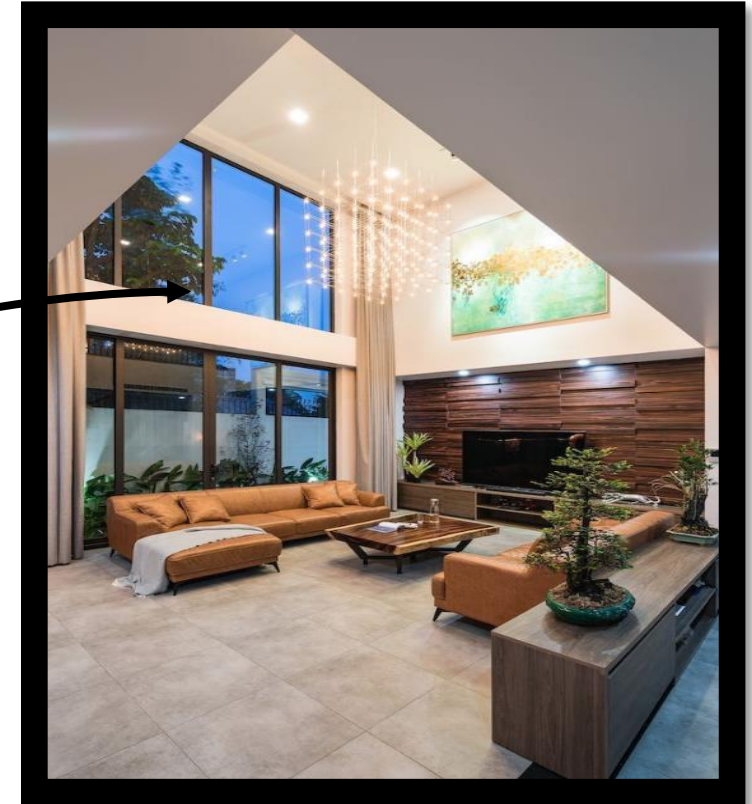
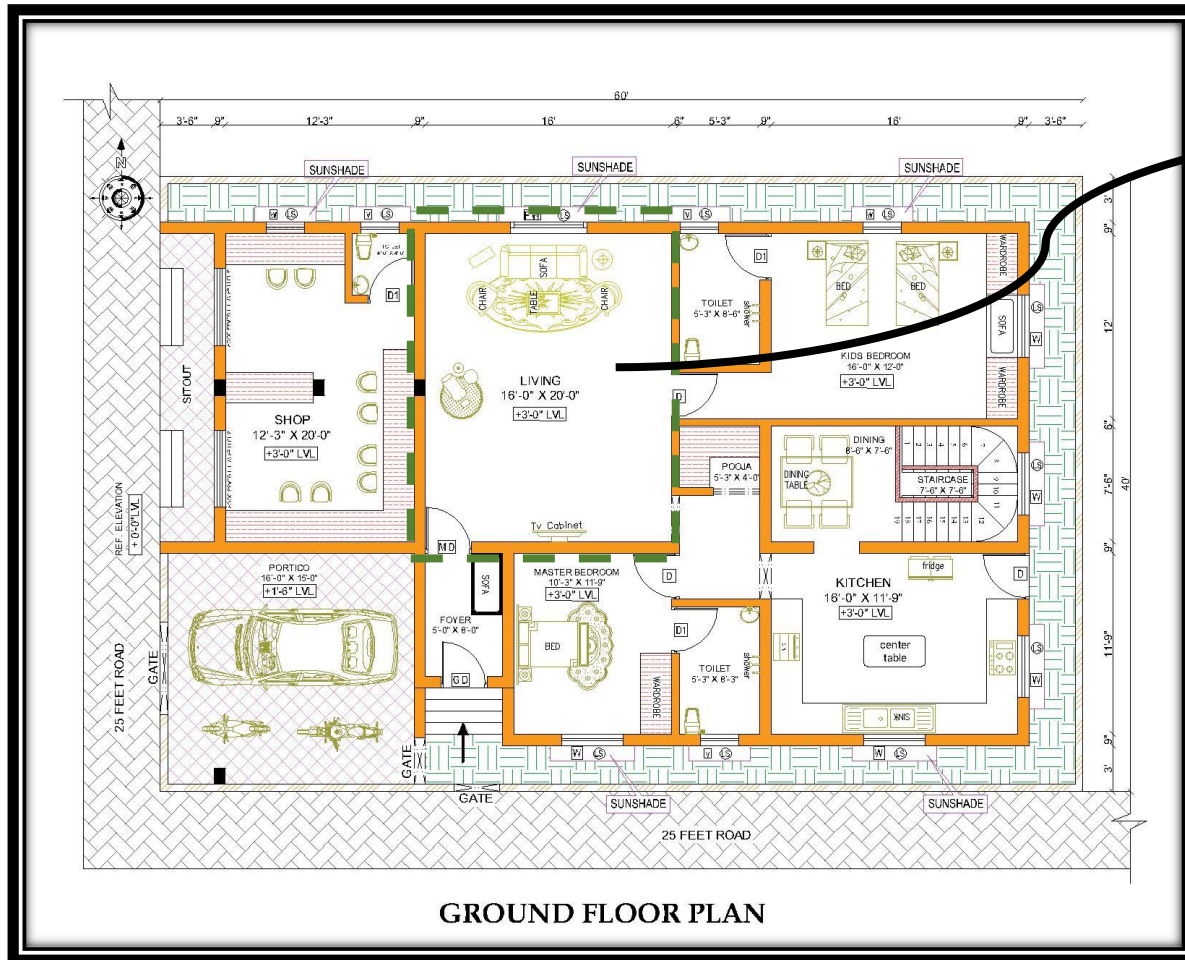
FOYER [5'-0" X 8'-0"]



It's designed to welcome guests and can serve as a transition space between the exterior and the interior of the building. Foyer designs often include elements like seating, lighting, and decor to create a warm, inviting atmosphere.

GROUND FLOOR PLAN

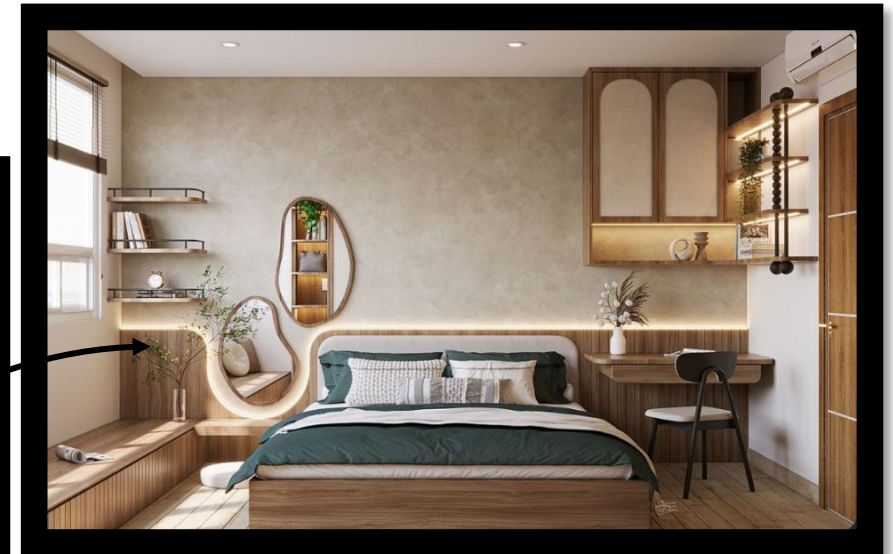
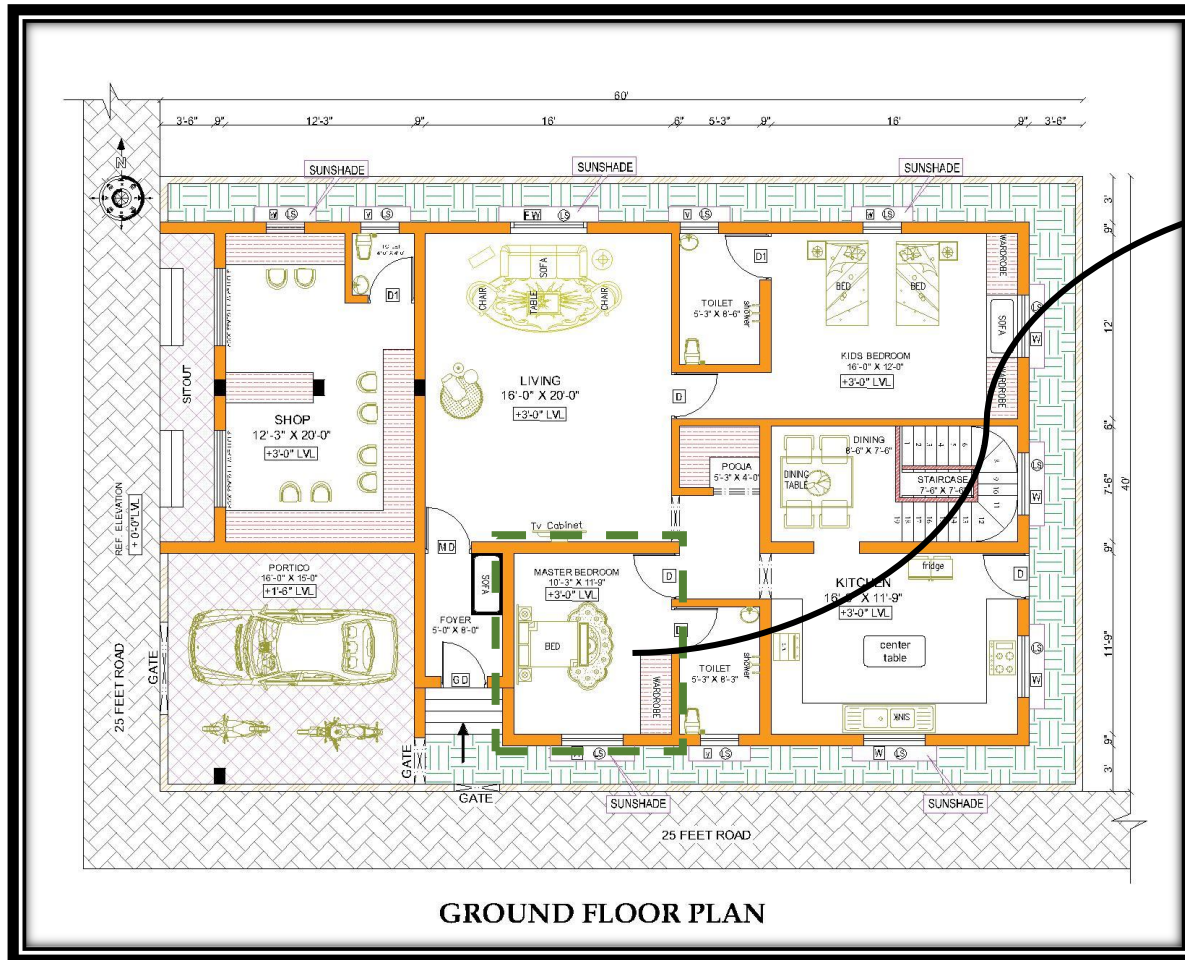
LIVING [16'-0" X 20'-0"]



A central space in a home where people gather to relax, socialize, and spend time together. It is typically furnished with comfortable seating like sofas and chairs, and may include a TV, coffee table, and decorative items.

GROUND FLOOR PLAN

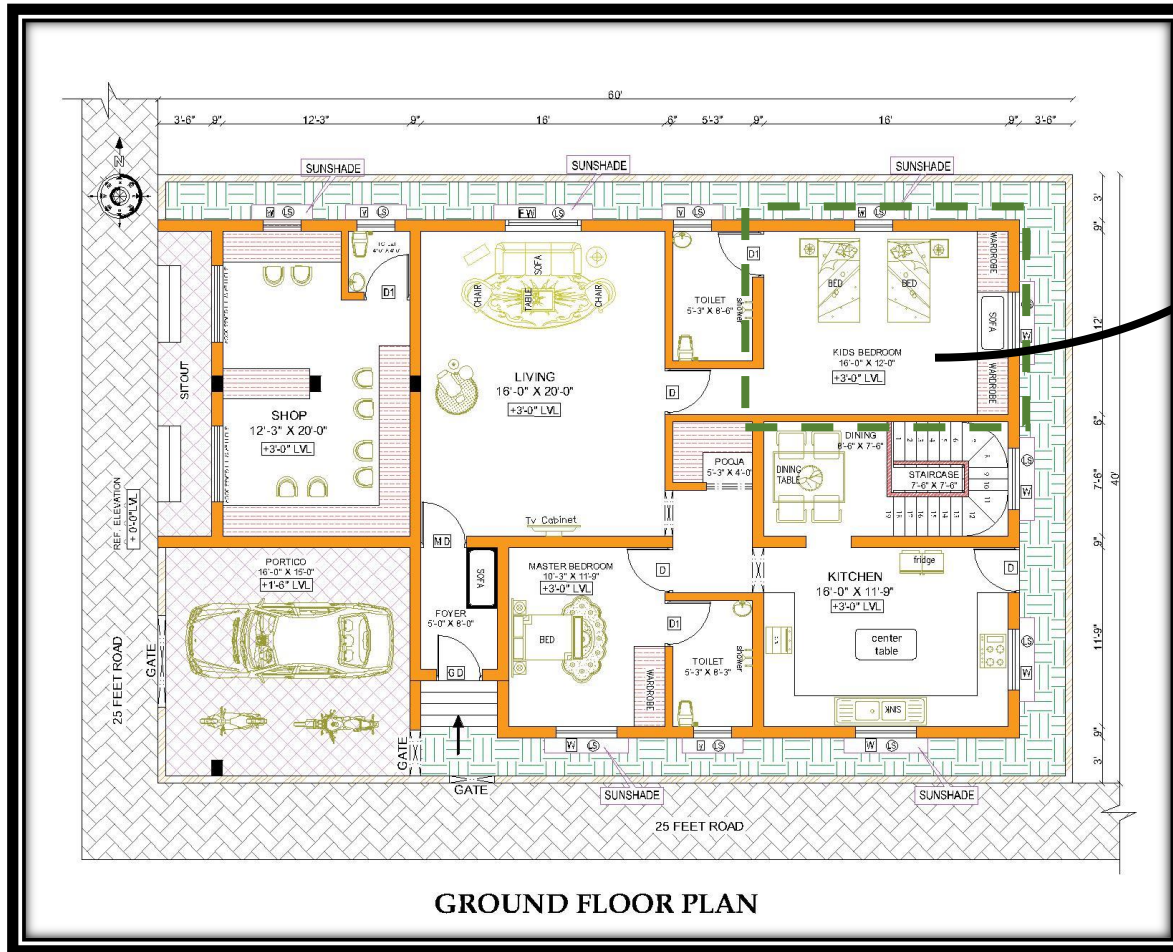
MASTER BEDROOM [10'-3" X 11'-9"]



A Private room in a home where people sleep and relax. It typically contains a bed, storage furniture like dressers or wardrobes, and personal items. Bedrooms are designed to be comfortable and restful, often with soft lighting, calming colors, and cozy furnishings. The layout and decor of a bedroom can vary based on individual preferences, but its primary purpose is to provide a quiet and peaceful environment for rest.

GROUND FLOOR PLAN

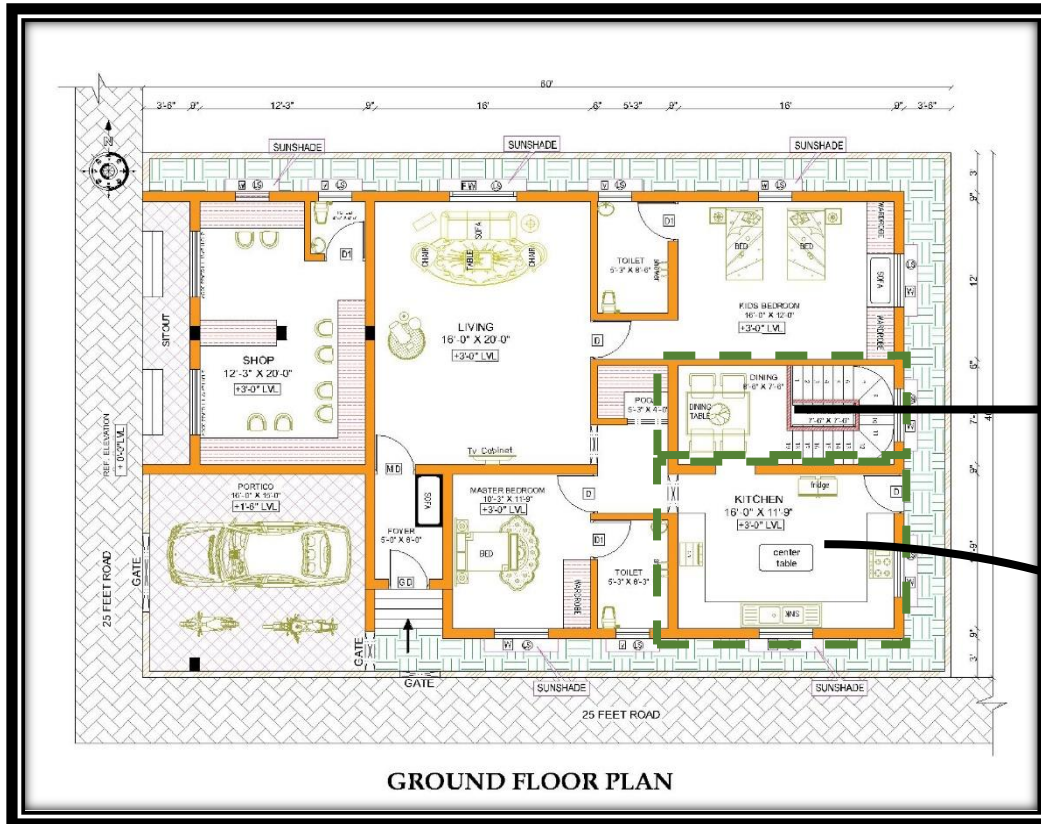
KIDS BEDROOM [16'-0" X 12'-0"]



A Space designed specifically for children, tailored to their needs and preferences. It usually includes a bed, storage for toys and clothes, and areas for play and study. The design often features bright colors, playful themes, and age-appropriate furniture to create a fun and safe environment.

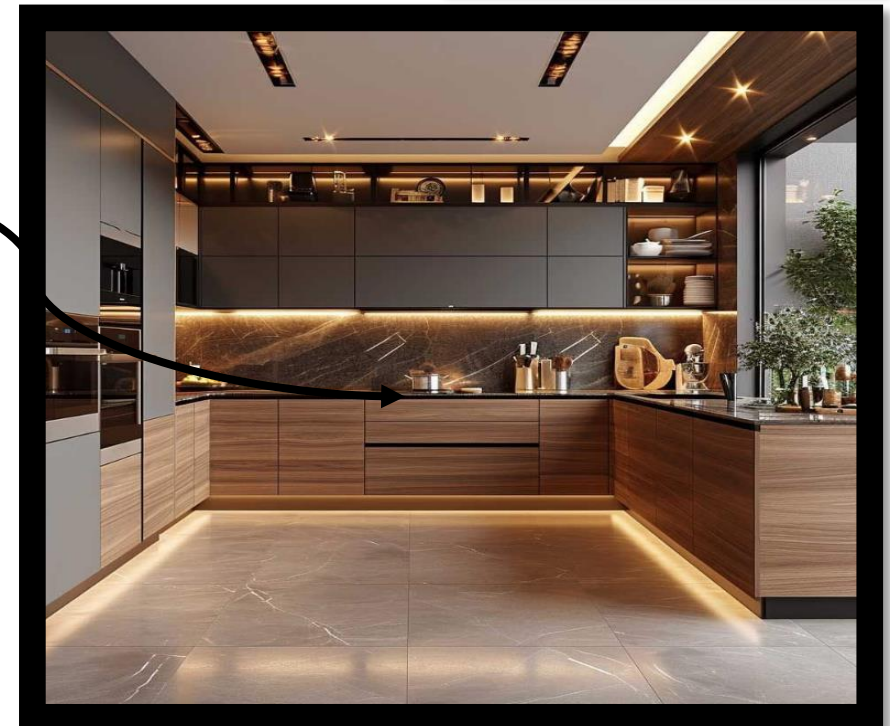
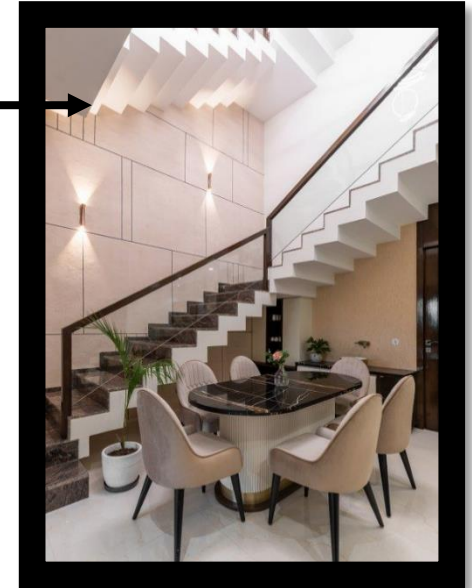
GROUND FLOOR PLAN

KITCHEN [16'-0" X 11'-9"] DINING [8'-6" X 7'-6"]



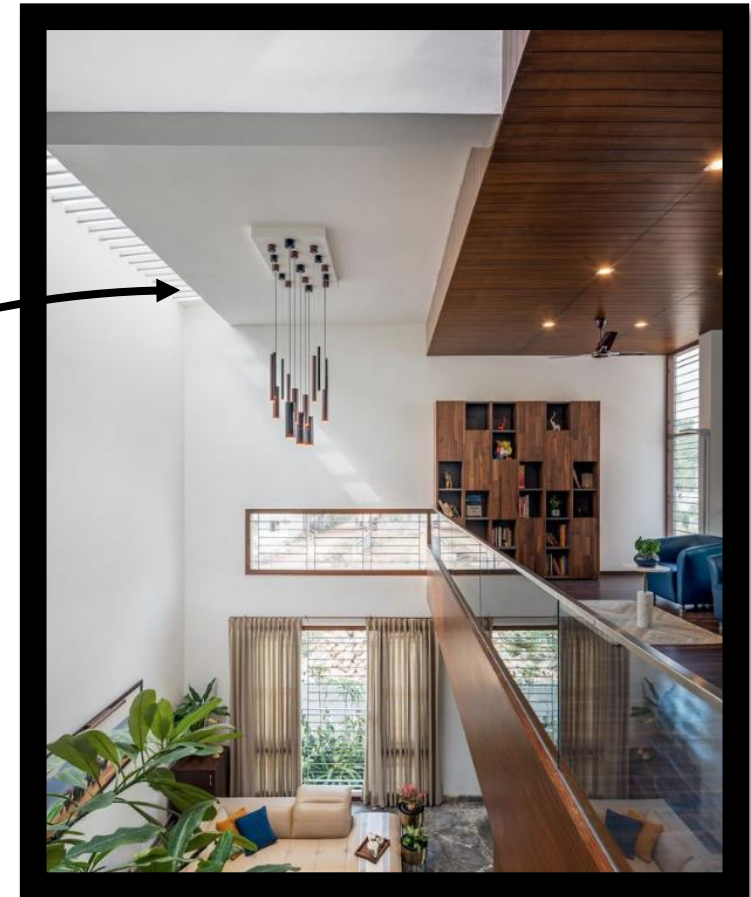
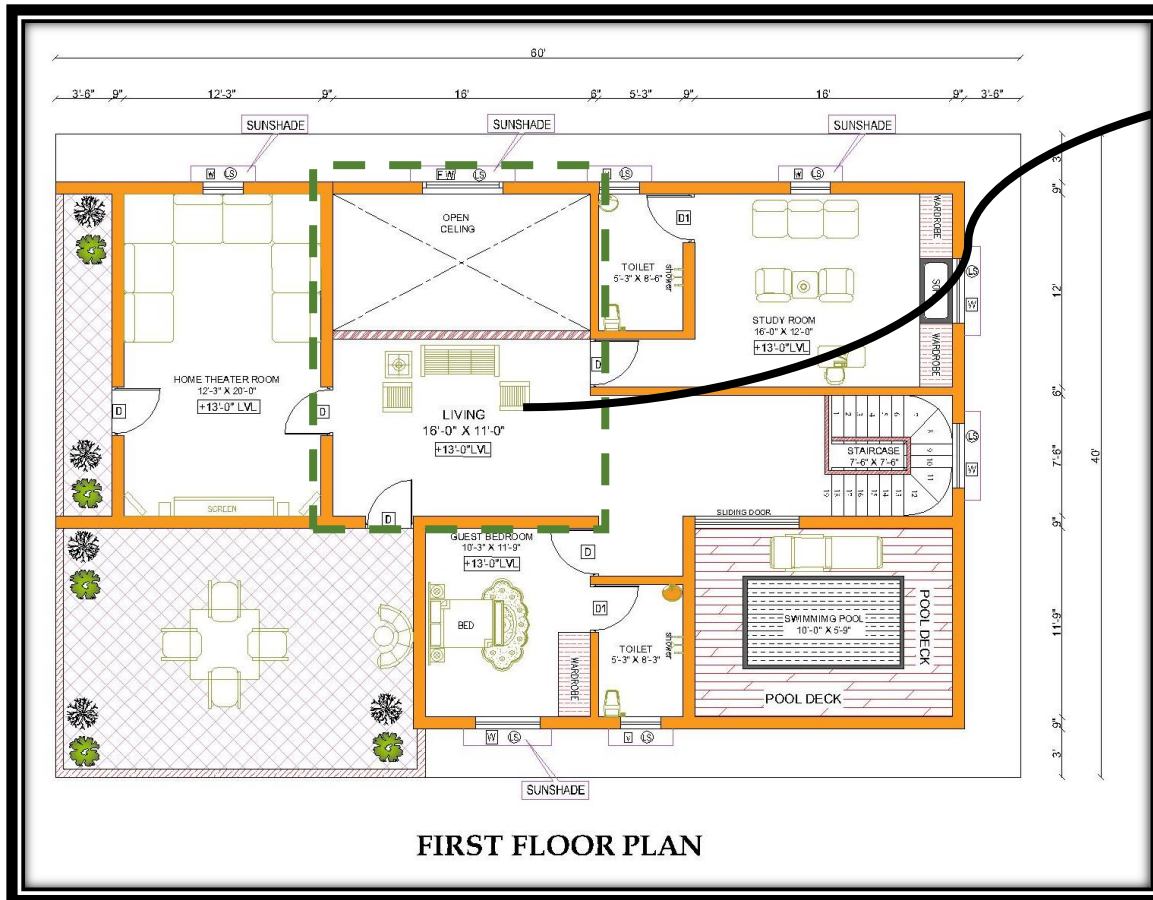
between cooking and dining, making it convenient for family gatherings and entertaining. The layout often allows for easy communication and interaction between those cooking and those eating.

The kitchen area is equipped with appliances, countertops, and cabinets for preparing meals, while the dining area typically features a table and chairs for enjoying meals. This open-concept design promotes a seamless flow



FIRST FLOOR PLAN

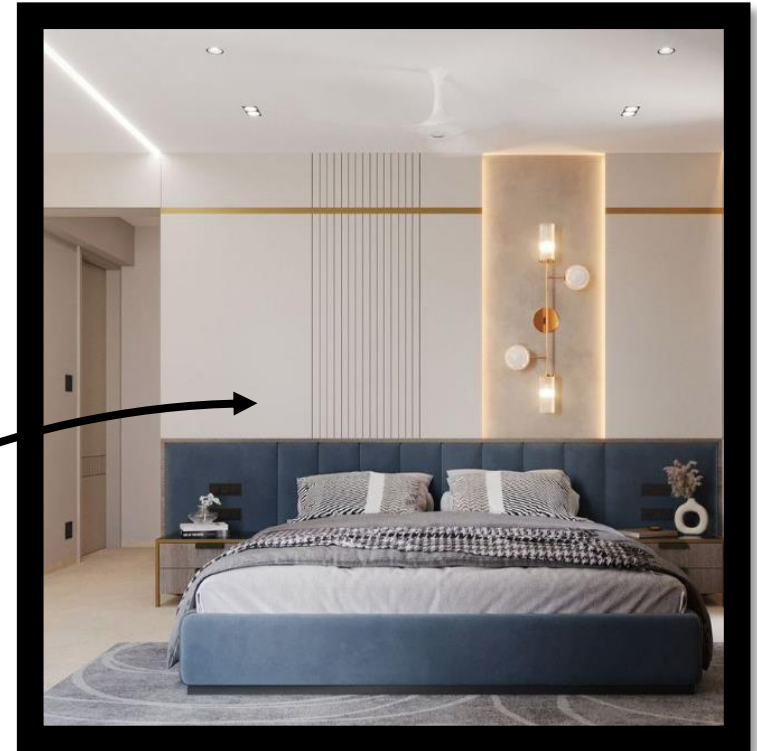
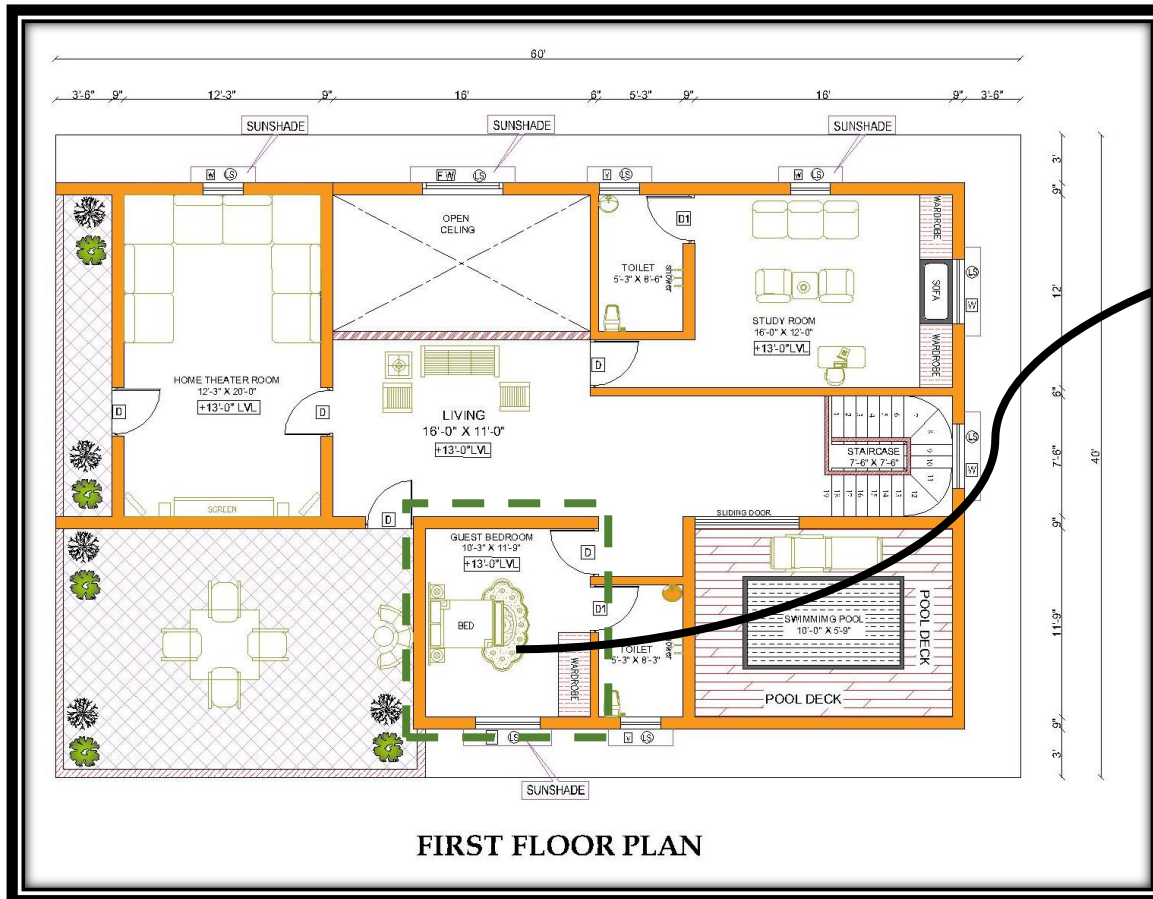
LIVING [16'-0" X 11'-0"]



The living room is often the heart of the home, used for entertainment and leisure activities. Its design can range from simple and cozy to more formal, depending on personal preferences and the function of the space.

FIRST FLOOR PLAN

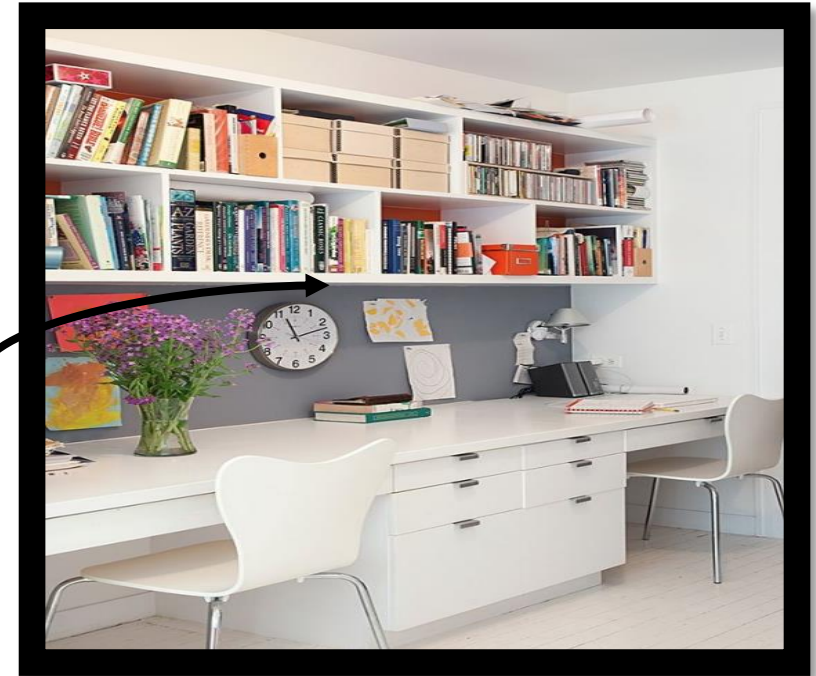
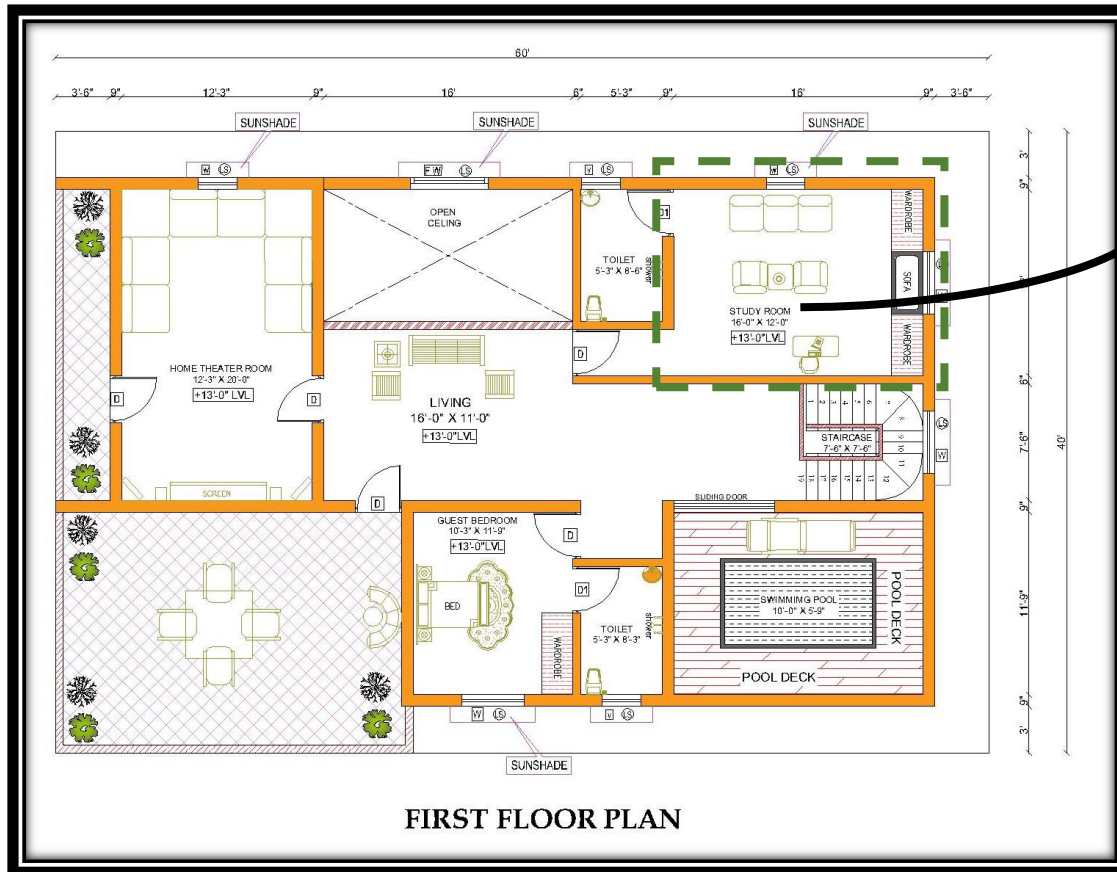
GUEST BEDROOM [10'-3" X 11'-9"]



A Home designed to accommodate visitors or guests. It typically includes a bed, storage space like a dresser or closet, and sometimes additional furniture like a chair or desk. The room is kept comfortable and welcoming to make guests feel at home during their stay.

FIRST FLOOR PLAN

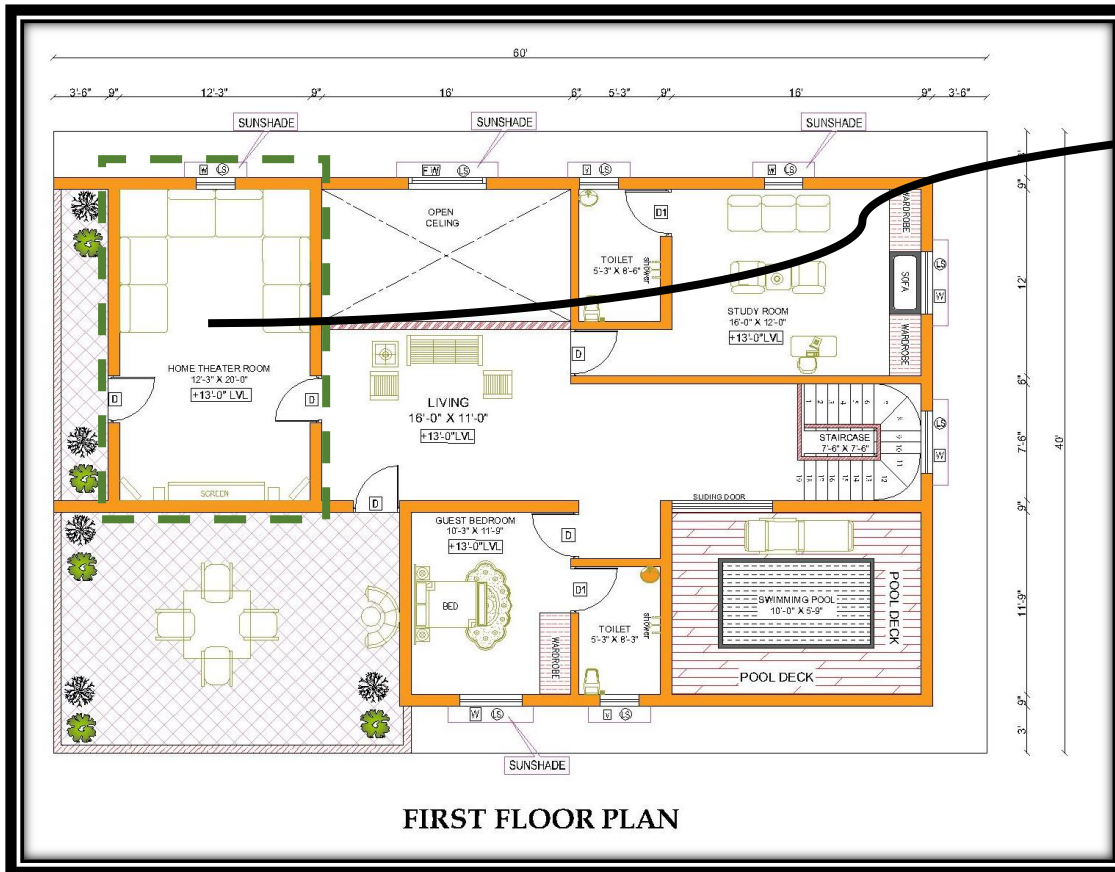
STUDY ROOM [16'-0" X 12'-0"]



A Quiet space in a home or building designed for reading, studying, or doing work. It usually has a desk, chair, bookshelves, and good lighting to create an environment that encourages focus and concentration. The room is often organized with minimal distractions, providing a dedicated area for learning, writing, or completing tasks. Study rooms are commonly used by students or professionals for productive work.

FIRST FLOOR PLAN

HOME THEATER ROOM [12'-0" X 20'-0"]

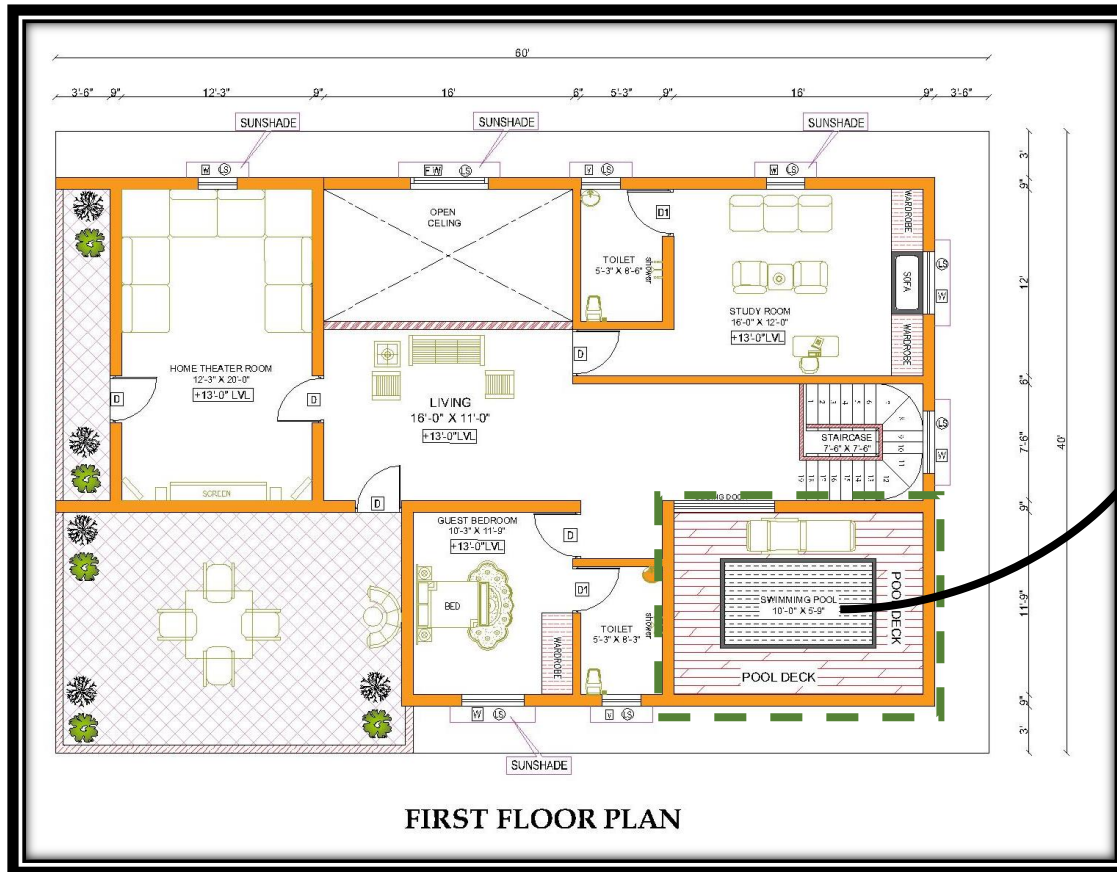


A Room in a house designed for watching movies, TV shows, or playing video games with a cinematic experience. It typically features a large screen or projector, surround sound

speakers, and comfortable seating like recliners or sofas. The room is often darkened to enhance the viewing experience, and may include soundproofing for better acoustics. Home theaters are set up to mimic the experience of a commercial movie theater but in the comfort of one's home.

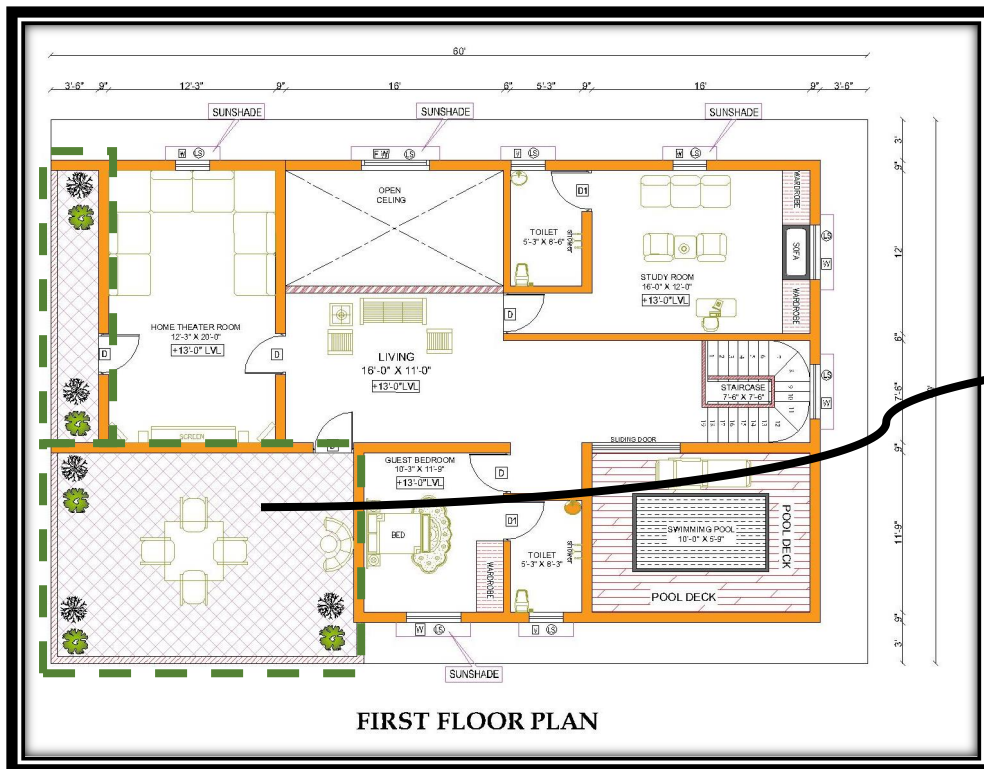
FIRST FLOOR PLAN

SWIMMING POOL [16'-0" X 11'-9"]



A Pool located on the terrace or rooftop of a building. It combines the luxury of swimming with the experience of enjoying elevated views. Terrace pools are often designed with modern, sleek aesthetics and can be surrounded by lounge areas, greenery, or outdoor furniture. They provide a relaxing and private space for leisure, and due to their location, they often offer a scenic atmosphere, making them an ideal spot for relaxation or entertainment

FIRST FLOOR PLAN



THE LOOK :

A Plan refers to a scaled drawing that shows one side of a building or structure from a vertical viewpoint. It provides details about the exterior appearance, including the height, design features, materials, and placement of doors, windows, and architectural elements. Elevation drawings help visualize how the building will look from the outside and are an essential part of architectural plans. They guide the construction process and ensure that the design intent is clearly communicated for each façade of the building.

