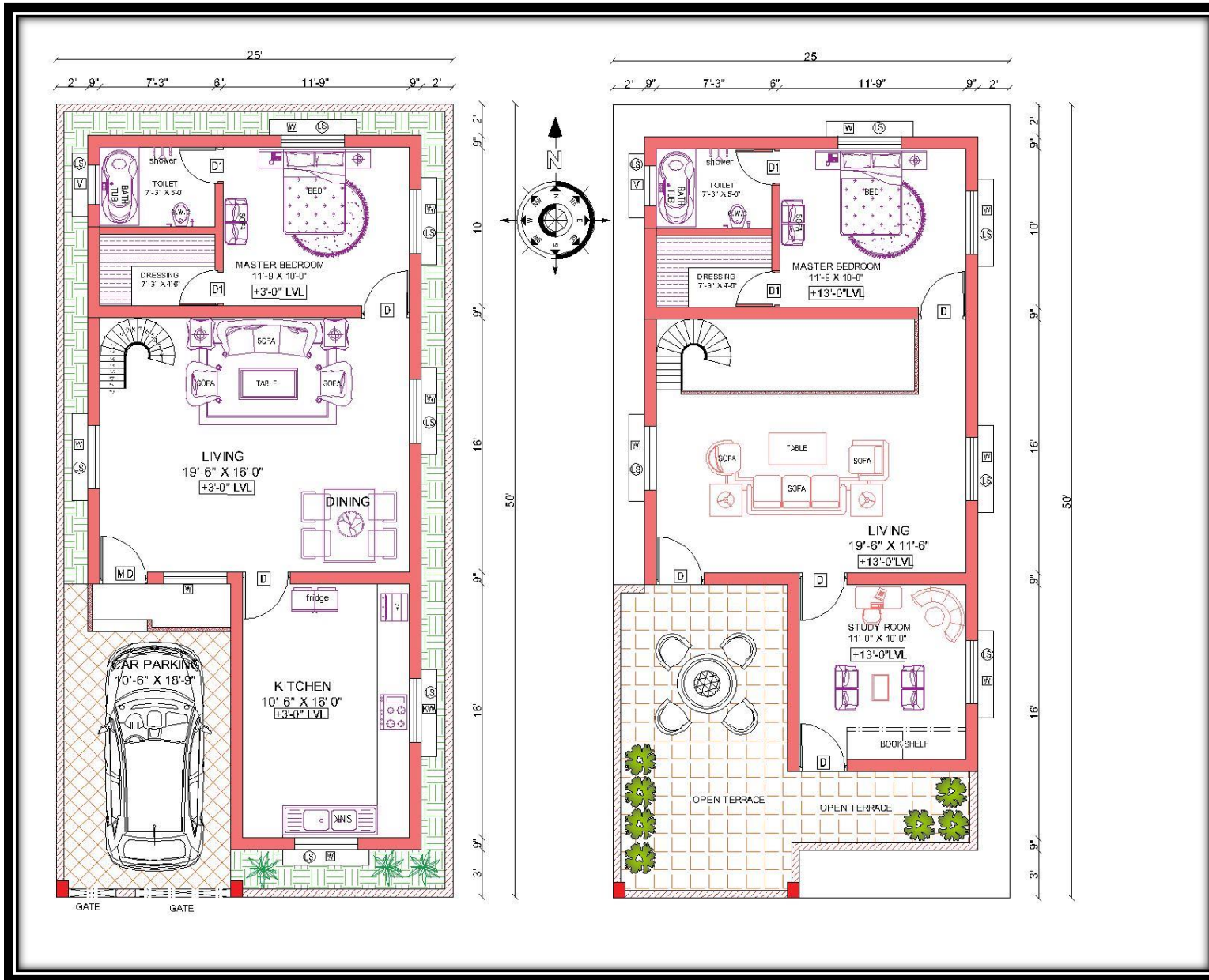


GROUND & FIRST FLOOR PLAN



GROUND & FIRST FLOOR PLAN

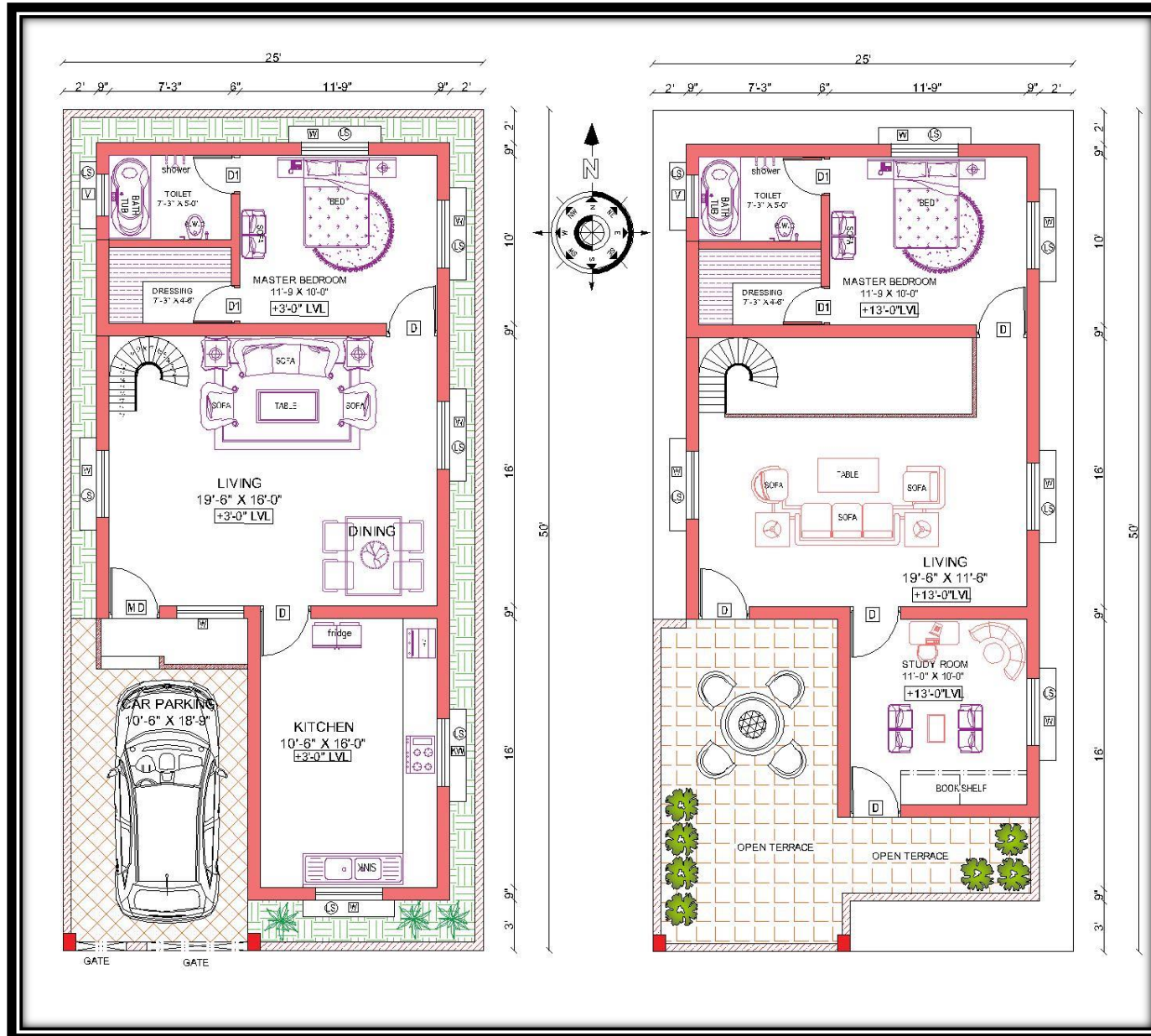
HOUSE PLAN 25' x 50' / SOUTH FACING |

House Plan ground floors, the floors are completely utilized without wastage.

The plot size is 25 feet x 50 feet. Total plinth area of building is 1250 sqft. And The Built up area is 1150 sqft at ground floor and 1150 sqft at first floor with fully occupied floor place.

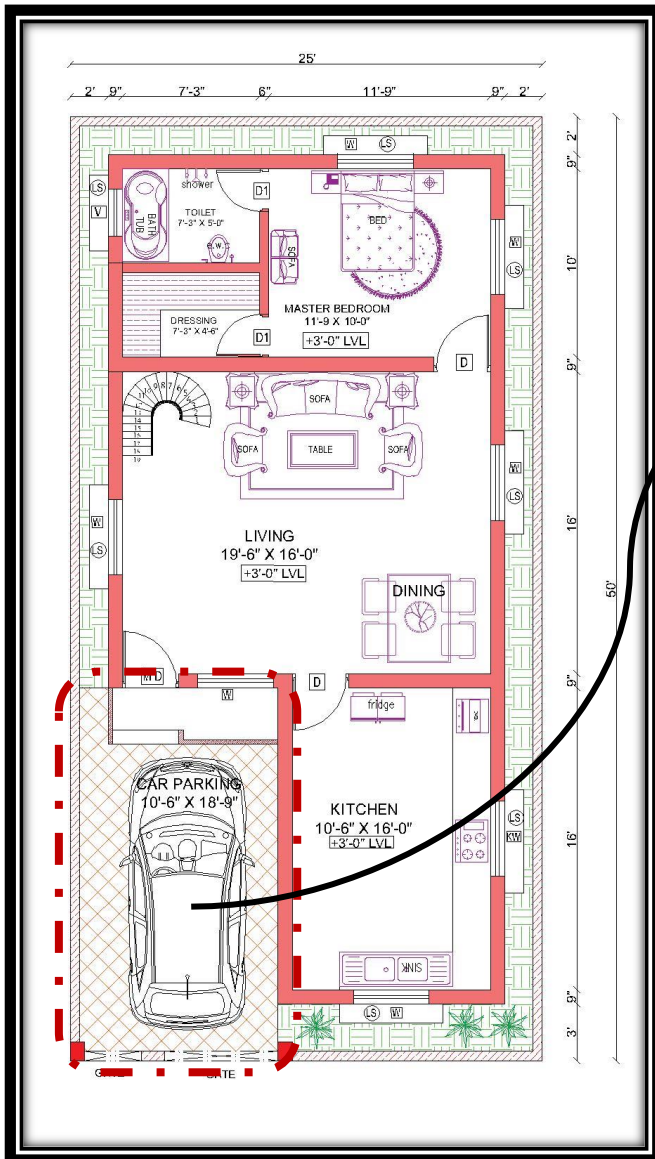
3 BHK at ground and first floor independent house type.

The house plans is well utilised with all utilities, staircase, balcony and well accommodating floor space.



GROUND FLOOR PLAN

CAR PARKING [10'-6" X 18'-9"]

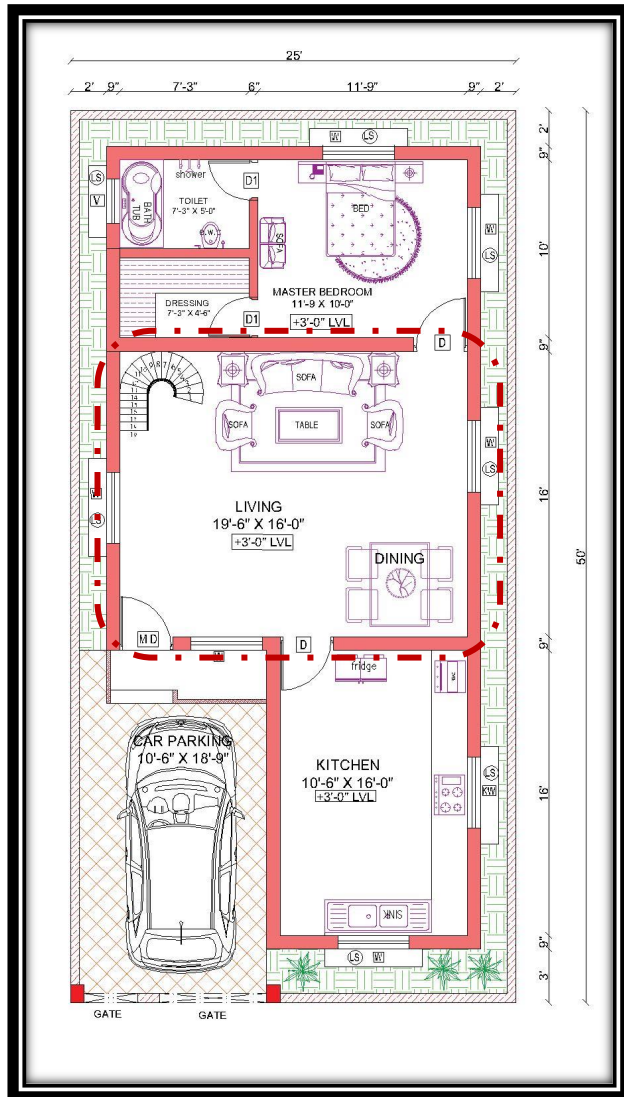


TRANQUIL ENTRANCE:

The main entrance to the house is emphasized with corner staircase with a spacious sit-out overlooking the lush garden area

GROUND FLOOR PLAN

LIVING WITH DINING [19'-6" X 16'-0"]

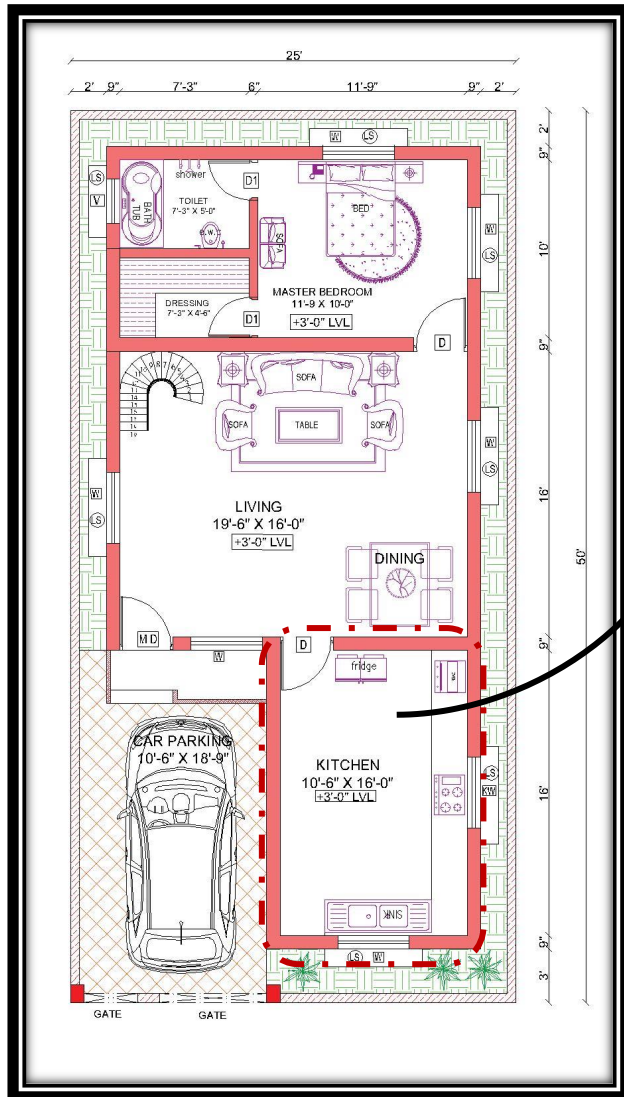


ENHANCED NATURAL LIGHT: The full open window floods the space with sunlight, creating a warm, inviting ambiance while reducing the need for artificial lighting during the day.

SEAMLESS FLOW: The integration of the dining and living areas creates a harmonious and functional layout, ideal for both everyday living and entertaining.

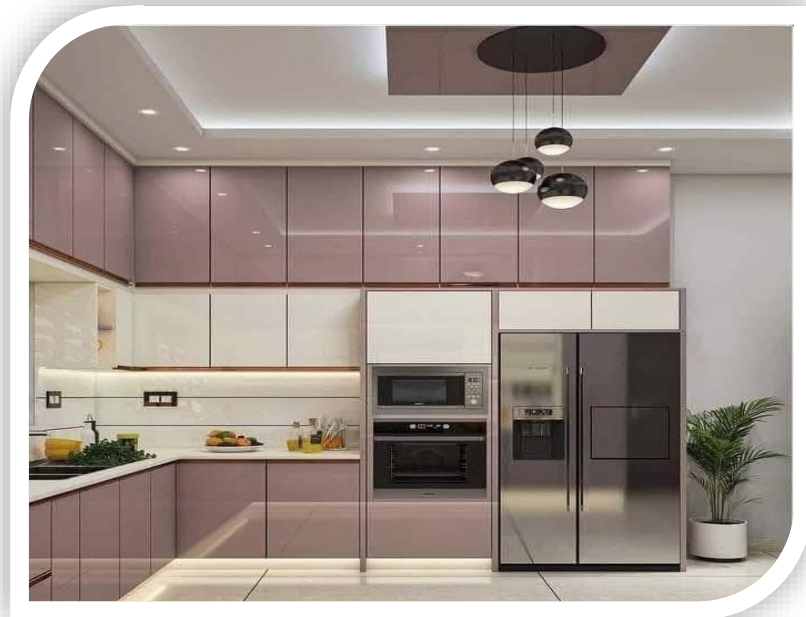
GROUND FLOOR PLAN

KITCHEN [10'-6" X 16'-0"]



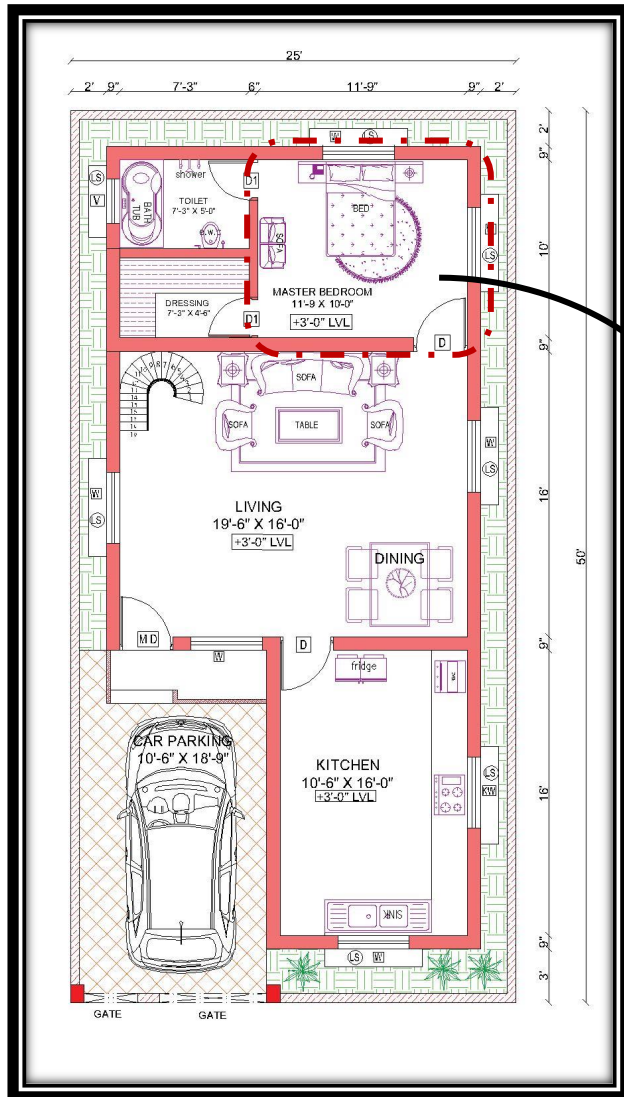
CLEANING & MAINTENANCE: Dishwashing and washing machines are provided a separate utility space to facilitate smooth functioning of the kitchen.

INCREASED EFFICIENCY: Each zone has a defined purpose, allowing smooth workflows and minimizing congestion during busy cooking or cleaning times. All kitchen appliances area provided separate counter space along with tall unit storage for ease of access and better storage



GROUND FLOOR PLAN

MASTER BEDROOM [11'-9" X 10'-0"]

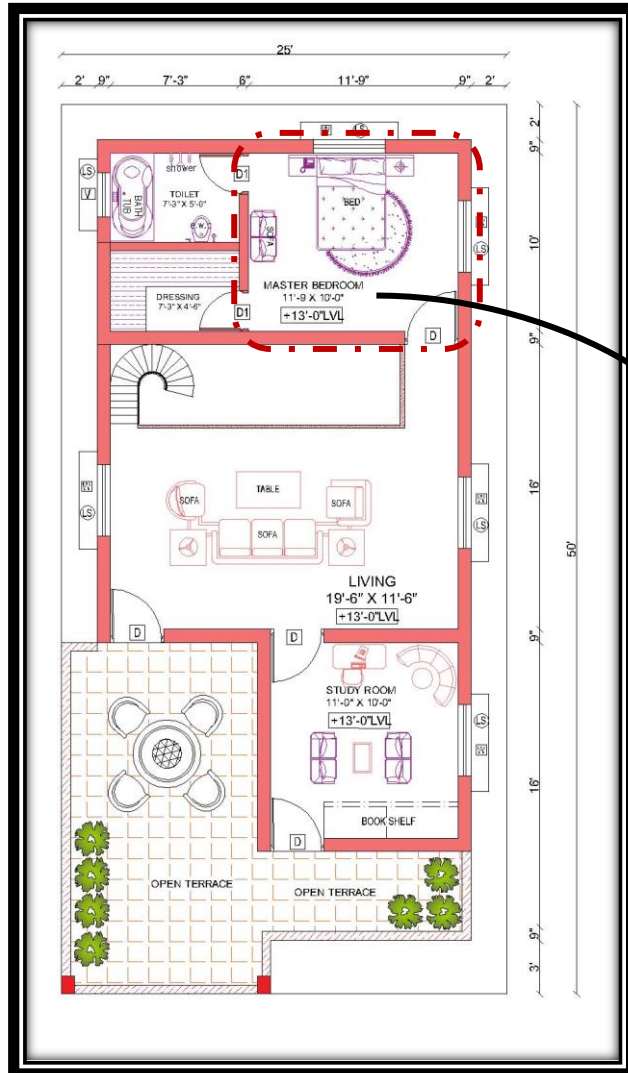


ENERGY EFFICIENCY: With natural airflow reducing the need for fans or air conditioners, this design is eco-friendly and cost-effective.

IMPROVED AIR CIRCULATION: Cross ventilation ensures a continuous flow of fresh air, keeping the room well ventilated and reducing stuffiness.

FIRST FLOOR PLAN

MASTER BEDROOM [11'-9" X 10'-0"]



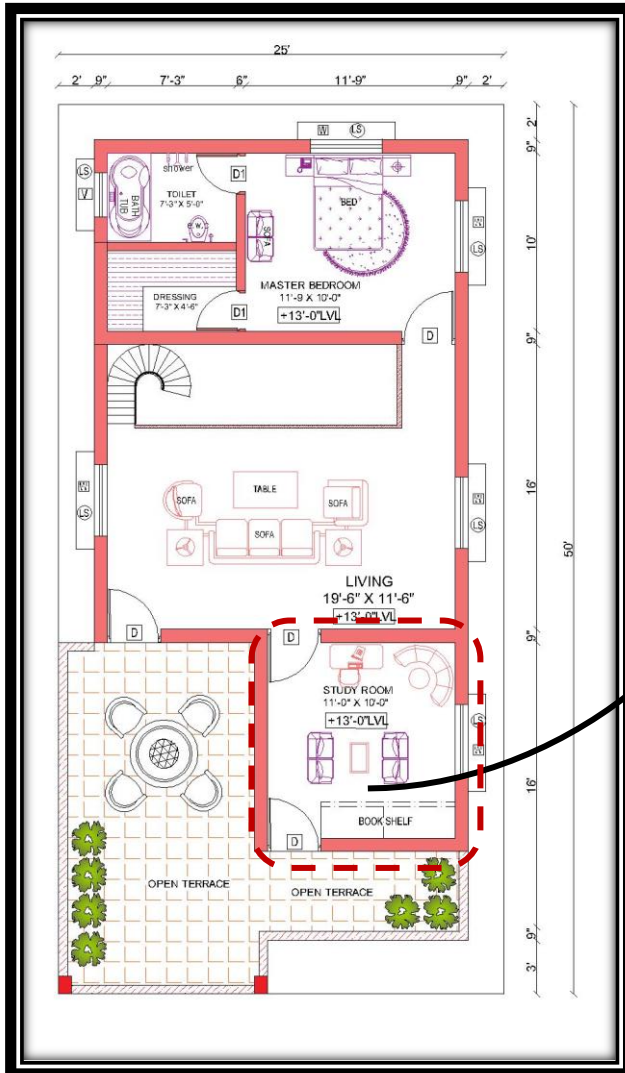
ENERGY EFFICIENCY: With natural airflow reducing the need for fans or air conditioners, this design is eco-friendly and cost-effective.

IMPROVED AIR CIRCULATION: Cross ventilation ensures a continuous flow of fresh air, keeping the room well ventilated and reducing stuffiness.



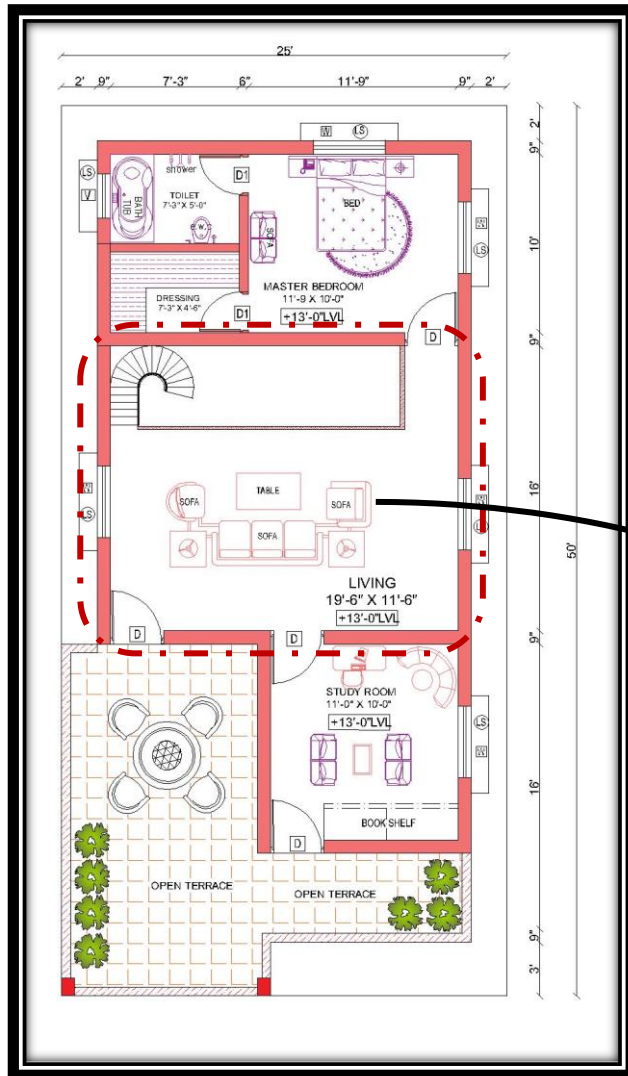
FIRST FLOOR PLAN

STUDY ROOM [11'-0" X 10'-0"]



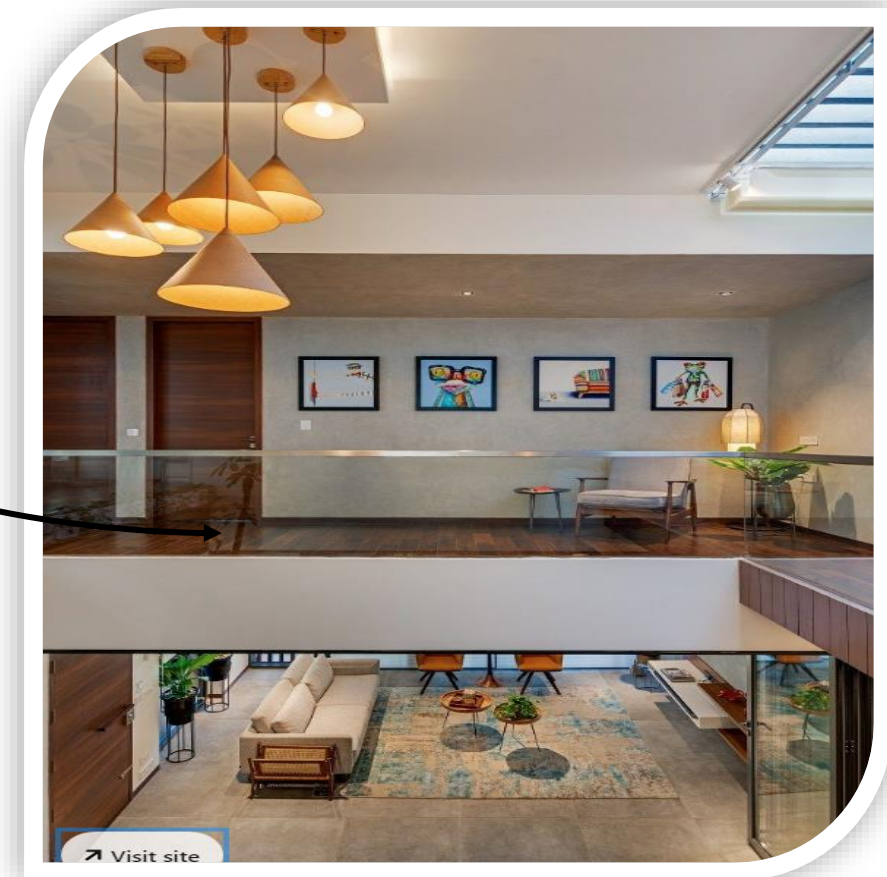
FIRST FLOOR PLAN

LIVING [19'-6" X 11'-6"]



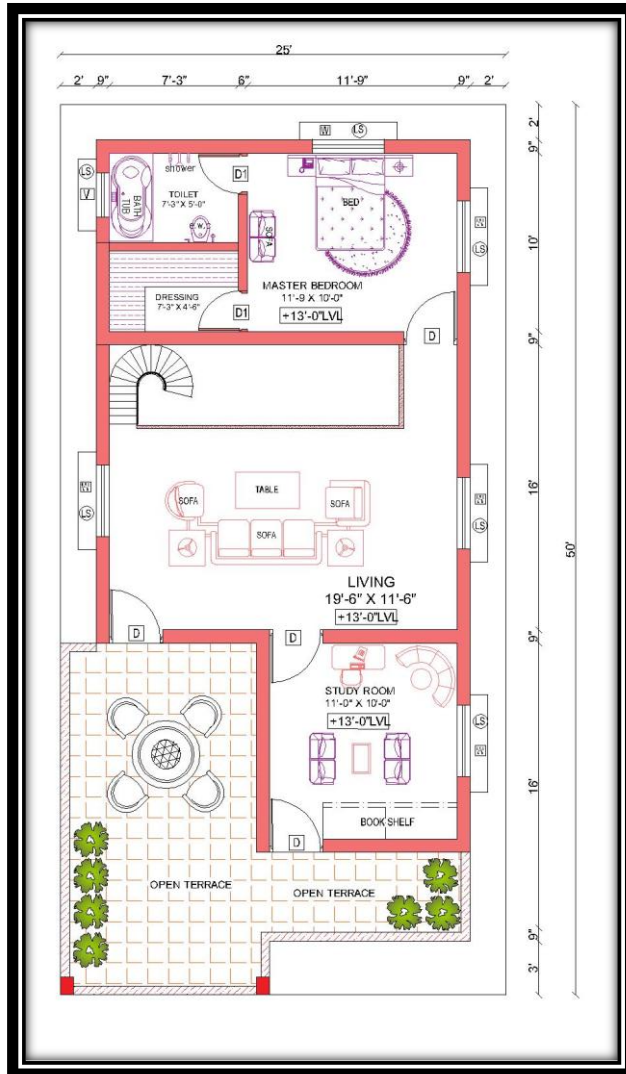
ENHANCED NATURAL LIGHT: The full open window floods the space with sunlight, creating a warm, inviting ambiance while reducing the need for artificial lighting during the day.

SEAMLESS FLOW: The integration of the dining and living areas creates a harmonious and functional layout, ideal for both everyday living and entertaining.



FIRST FLOOR PLAN

BALCONY



THE LOOK:

The projected balcony adds on a interesting element to the elevation and can be either a closed private balcony or an open one displaying the lush greeneries

