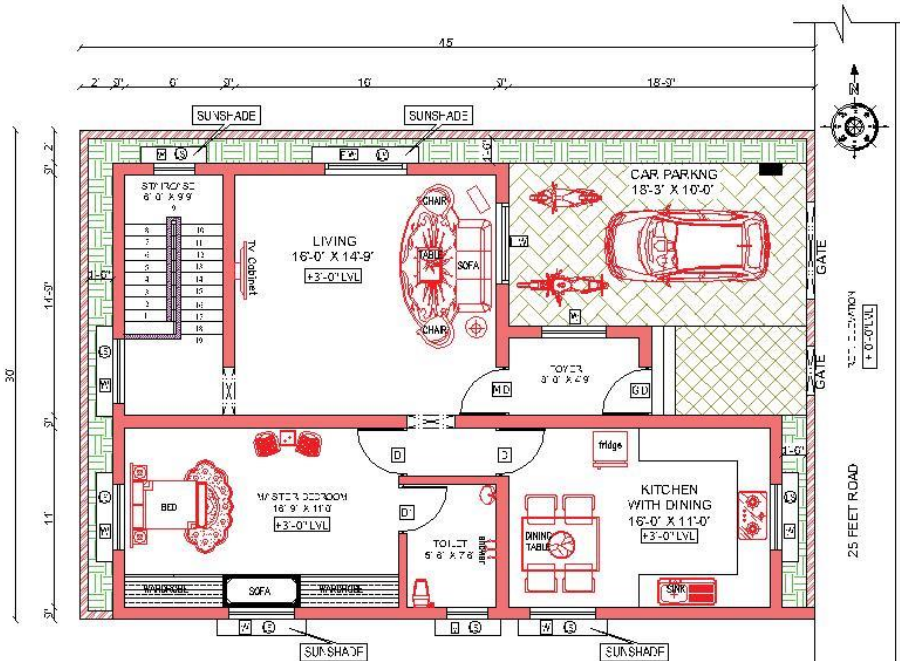
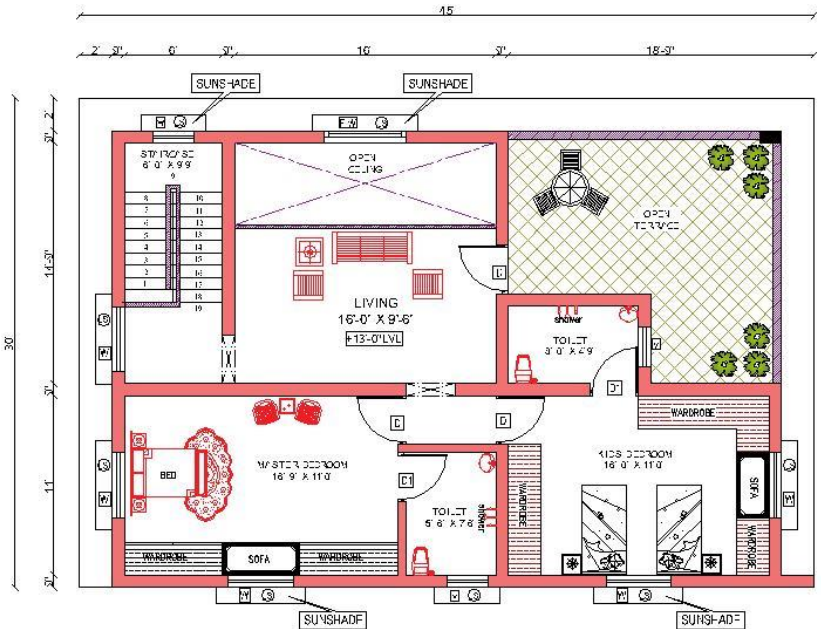


GROUND FLOOR AND FIRST FLOOR PLAN



GROUND FLOOR PLAN



FIRST FLOOR PLAN

FLOOR PLAN

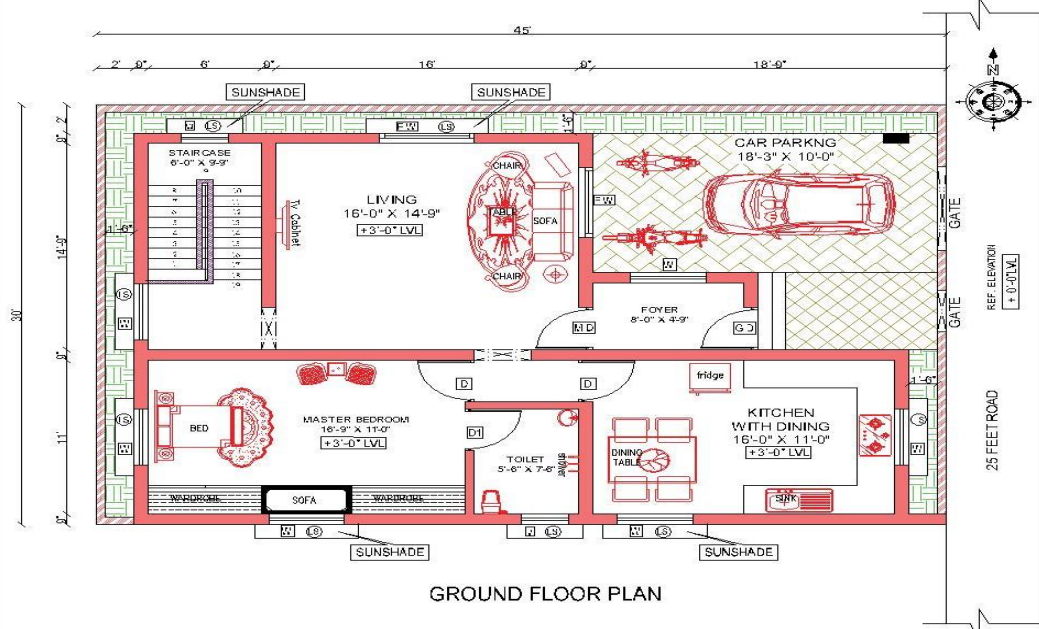
HOUSE PLAN 45' x 30' / EAST FACING |

House Plan ground floors, the floors are completely utilized without wastage.

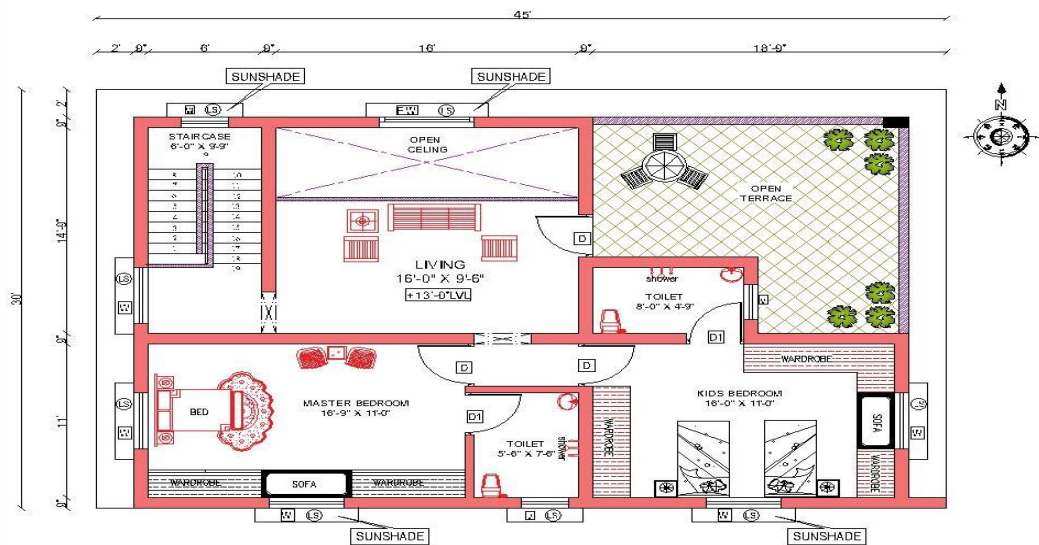
The plot size is 45 feet x 30 feet. Total plinth area of building is 1350 sqft and The Built up area is 1200 sqft at ground floor , 1200 sqft at first floor with fully occupied floor place.

In Ground floor 1 BHK and 2 BHK in first floor independent house type.

The house plans is well utilised with all utilities, staircase, balcony and well accommodating floor space



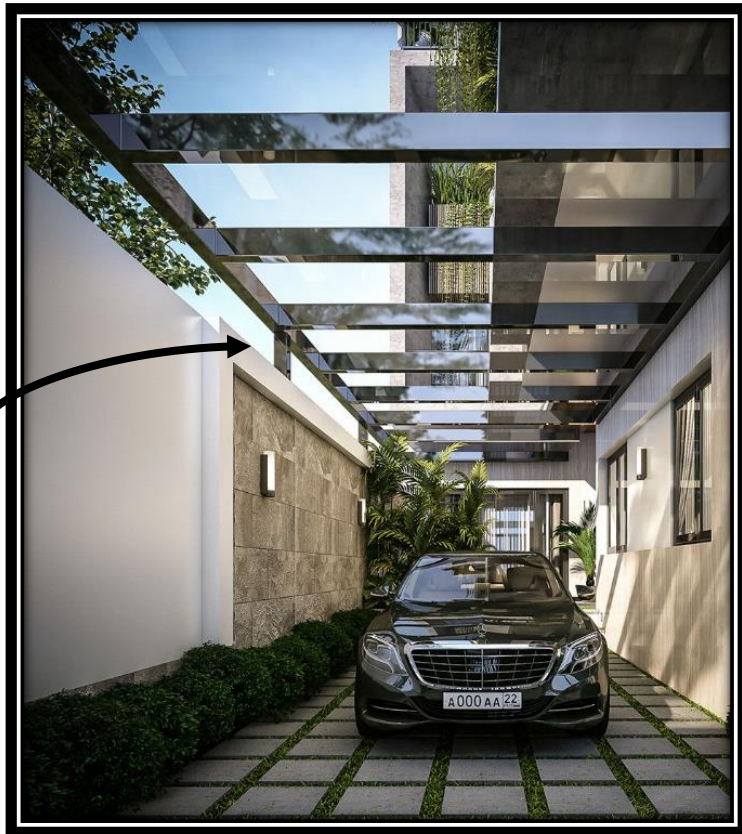
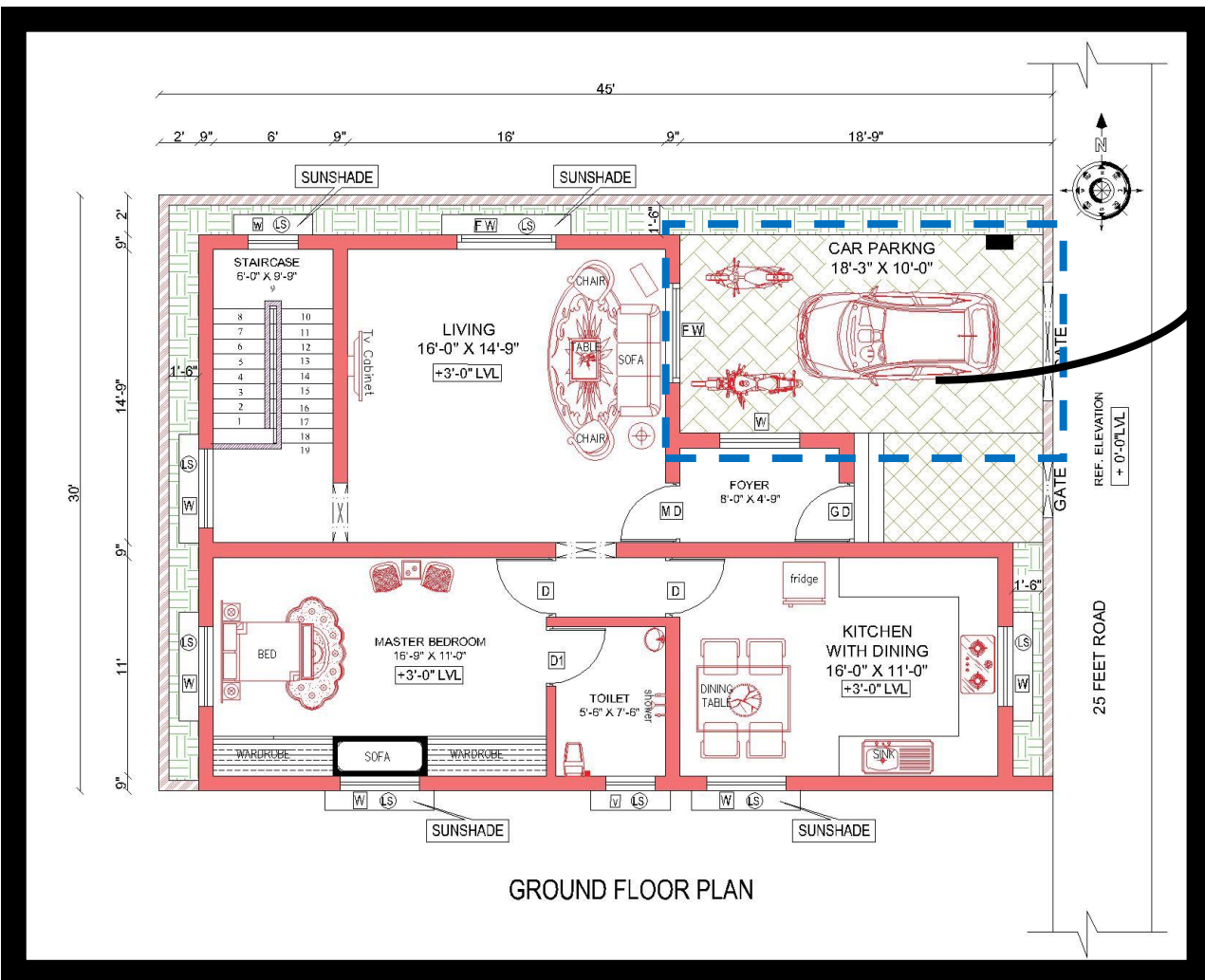
GROUND FLOOR PLAN



FIRST FLOOR PLAN

GROUND FLOOR PLAN

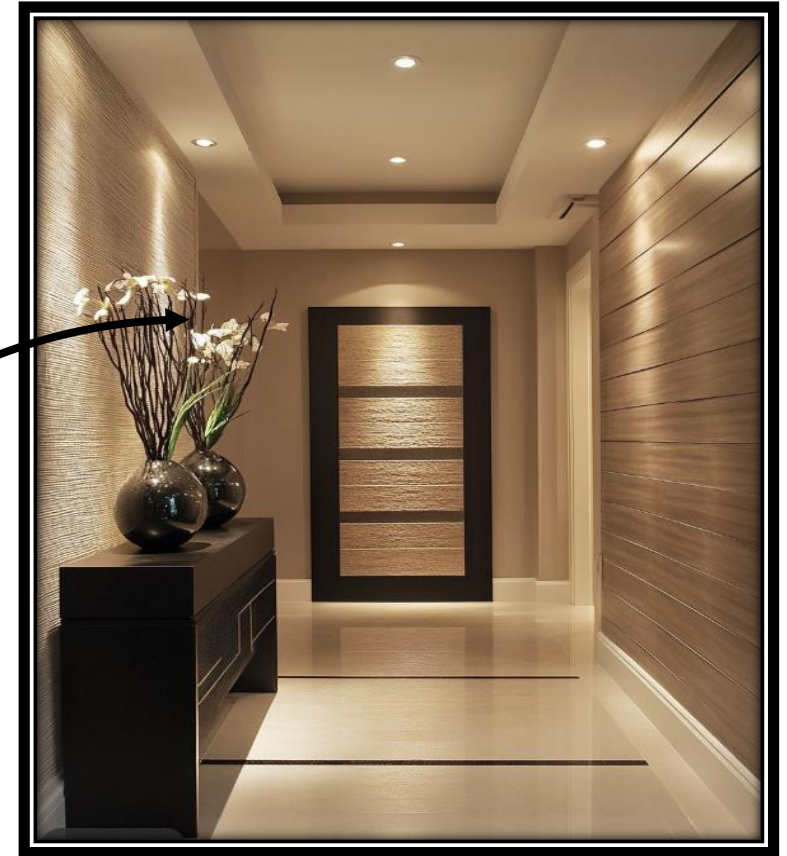
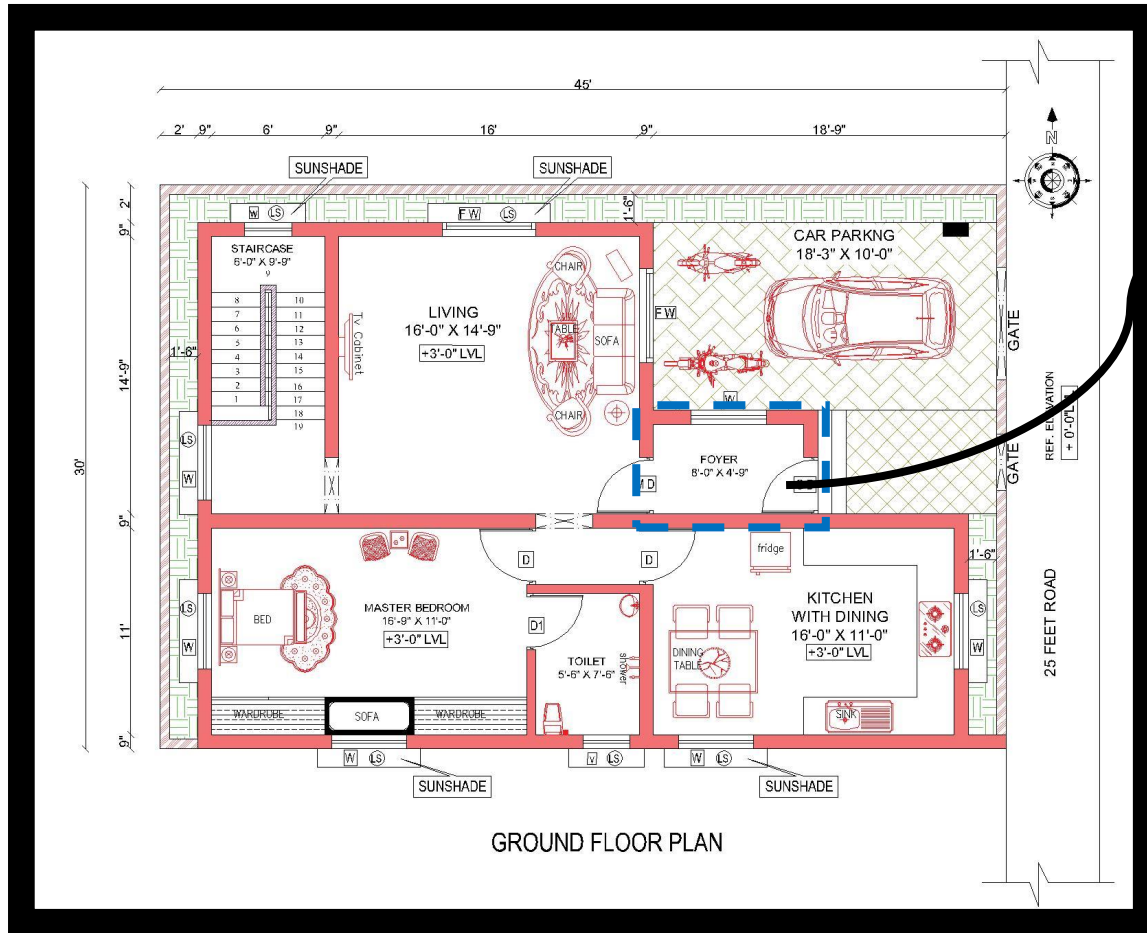
CAR PAKING [18'-3" X 10'-0"]



A designated area, either within a garage or on a driveway, designed to securely park vehicles on the property. It ensures convenient access for homeowners while keeping vehicles safe from environmental factors

GROUND FLOOR PLAN

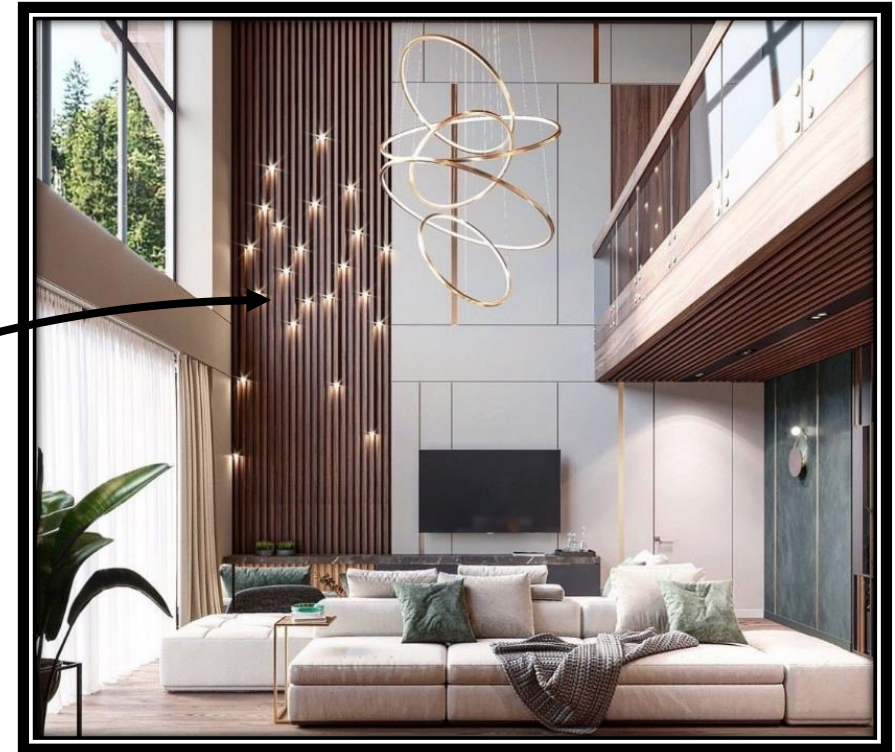
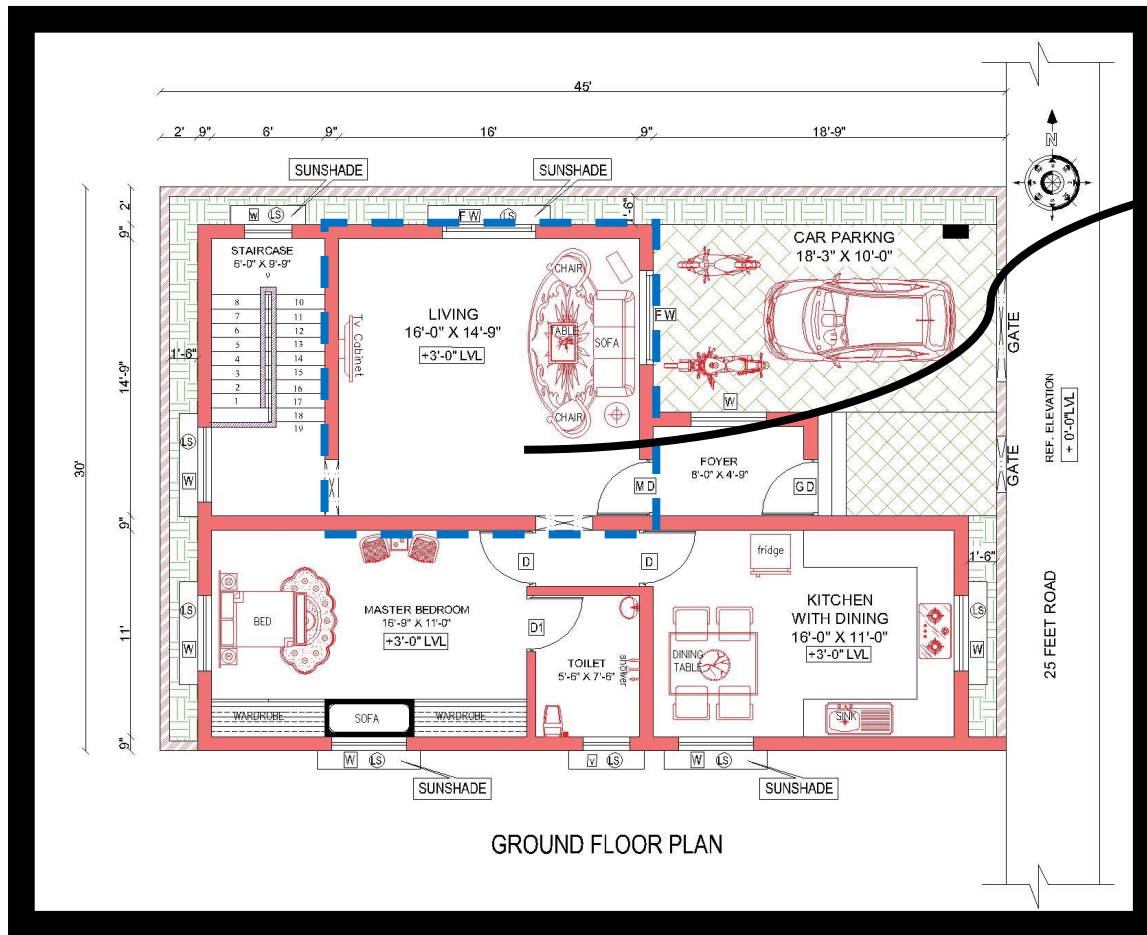
FOYER [8'-0" X 4'-9"]



A spacious entryway or reception area located at the front of the house or building. It serves as a transitional space between the exterior and the interior, often used to greet guests and provide access to other areas of the home. A well-designed foyer enhances the first impression of the home, offering functionality with elements such as seating, storage, or decorative accent.

GROUND FLOOR PLAN

LIVING [16'-0" X 14'-9"]

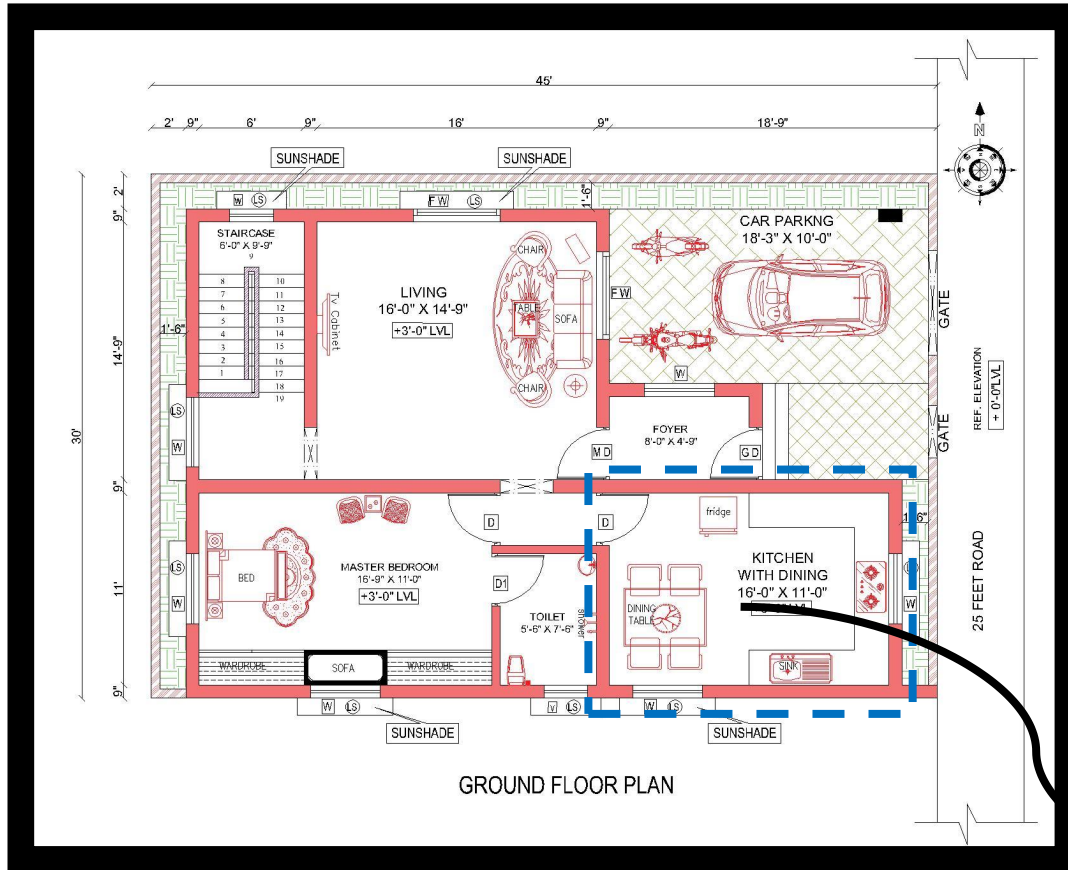


A central gathering space within a home, designed for relaxation, socializing, and entertainment. Typically located near the main entrance, it serves as a multifunctional area where family members and guests can engage in various activities, such as watching television, conversing, or enjoying leisure time.

The layout and design of the living room often reflect the overall style of the home and provide comfort and aesthetic appeal.

GROUND FLOOR PLAN

KITCHEN [16'-0" X 11'-0"]

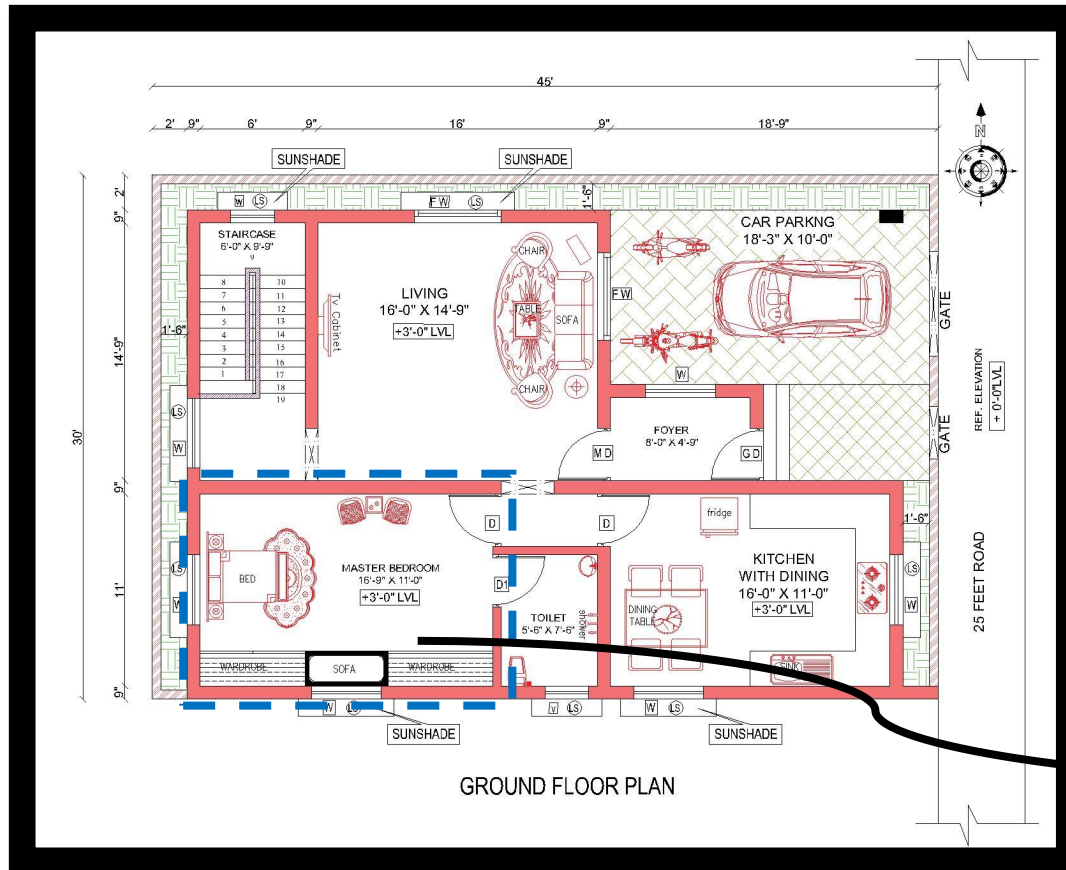


The kitchen with an adjoining dining area serves as a functional and social space within the home, combining meal preparation and dining in a seamless layout. The kitchen is equipped with appliances, countertops, and storage for cooking, while the dining area provides a dedicated space for family meals and gatherings. This integrated design promotes convenience, enhances the flow of activities, and encourages interaction between household members during meal times.

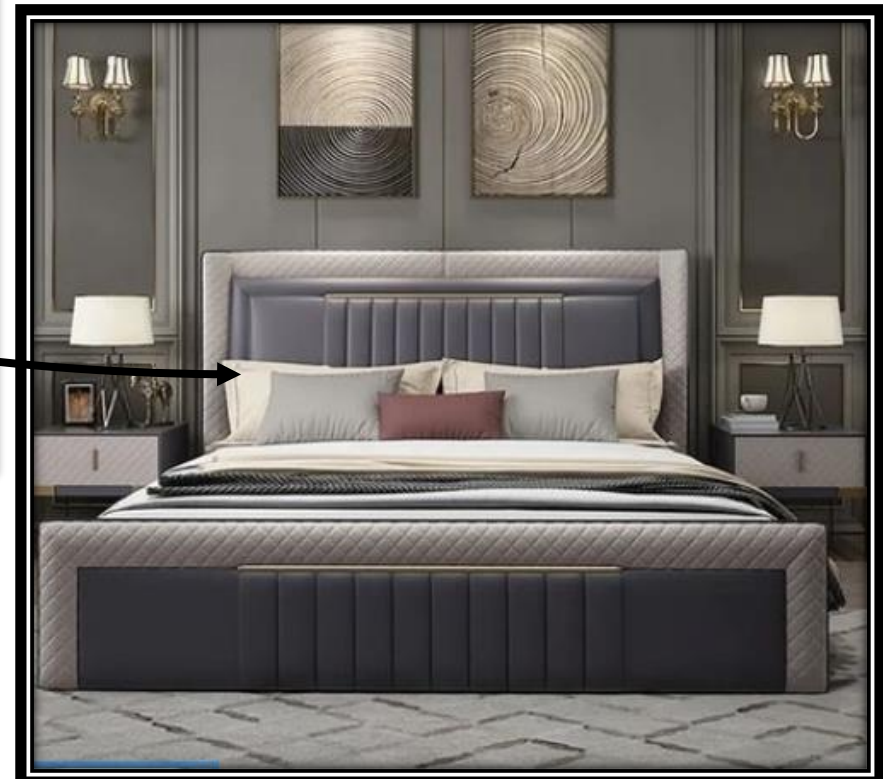


GROUND FLOOR PLAN

BEDROOM [16'-9" X 11'-0"]

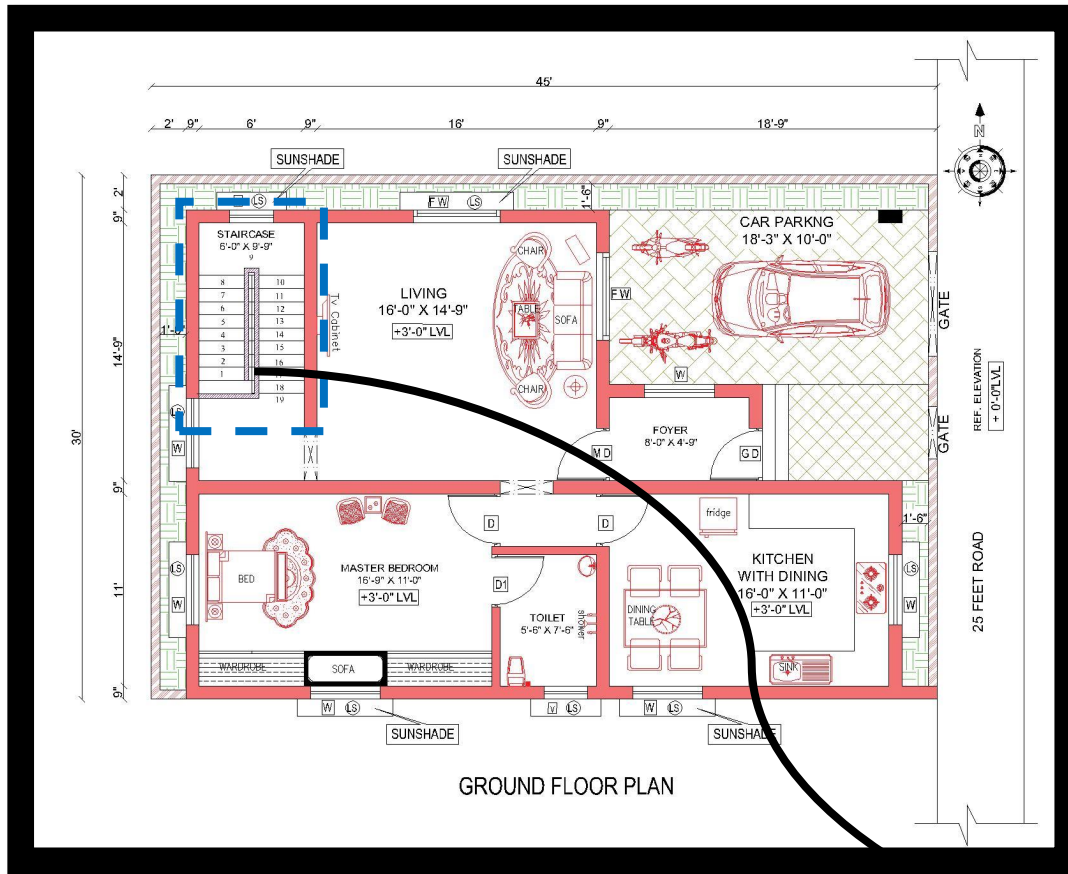


The bedroom is a private, personal space within the home, designed primarily for rest and relaxation. It typically includes essential furnishings such as a bed, wardrobe, and bedside tables, and may feature additional amenities like an en-suite bathroom or closet. The layout and design of the bedroom prioritize comfort and tranquility, making it a restful retreat for the occupants.



GROUND FLOOR PLAN

STAIRCASE [6'-0" X 9'-9"]



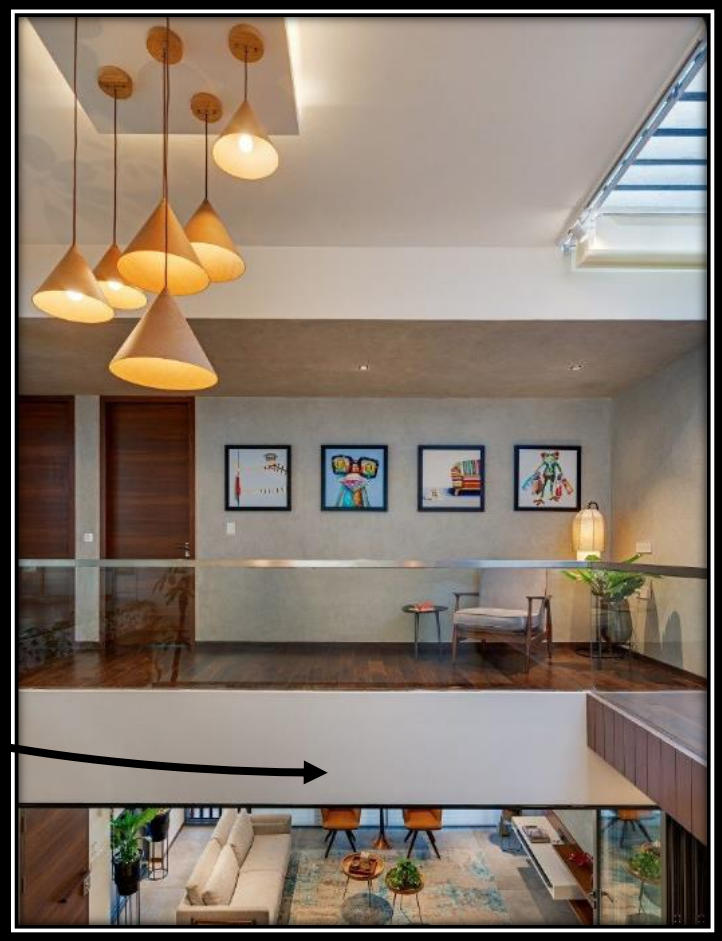
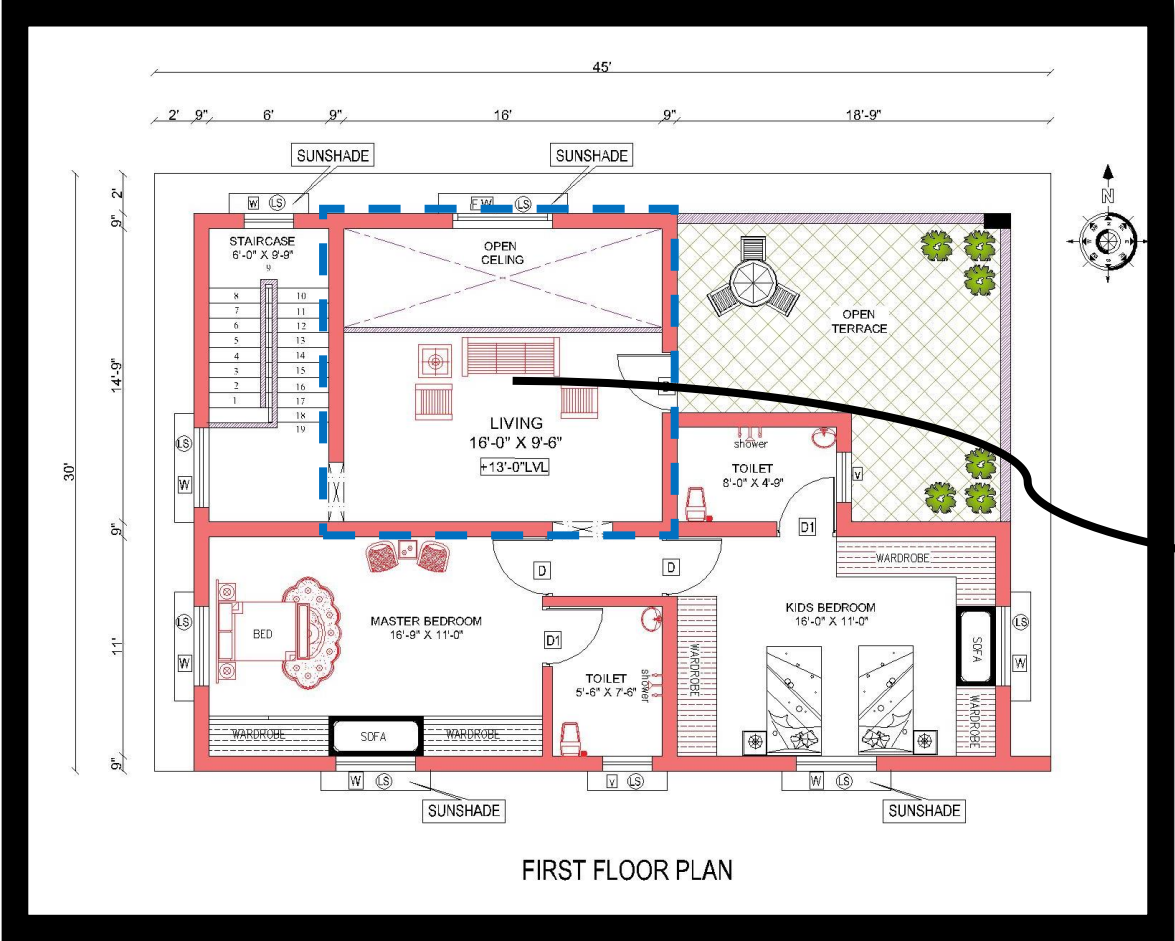
A structural element within a building, designed to provide vertical circulation between different floors. It typically consists of a series of steps, handrails, and landings, ensuring safe and convenient movement between levels. The design and placement of the staircase are crucial to the overall flow and accessibility of the building, and it can also serve as a key architectural feature that

enhances the interior aesthetics.



FIRST FLOOR PLAN

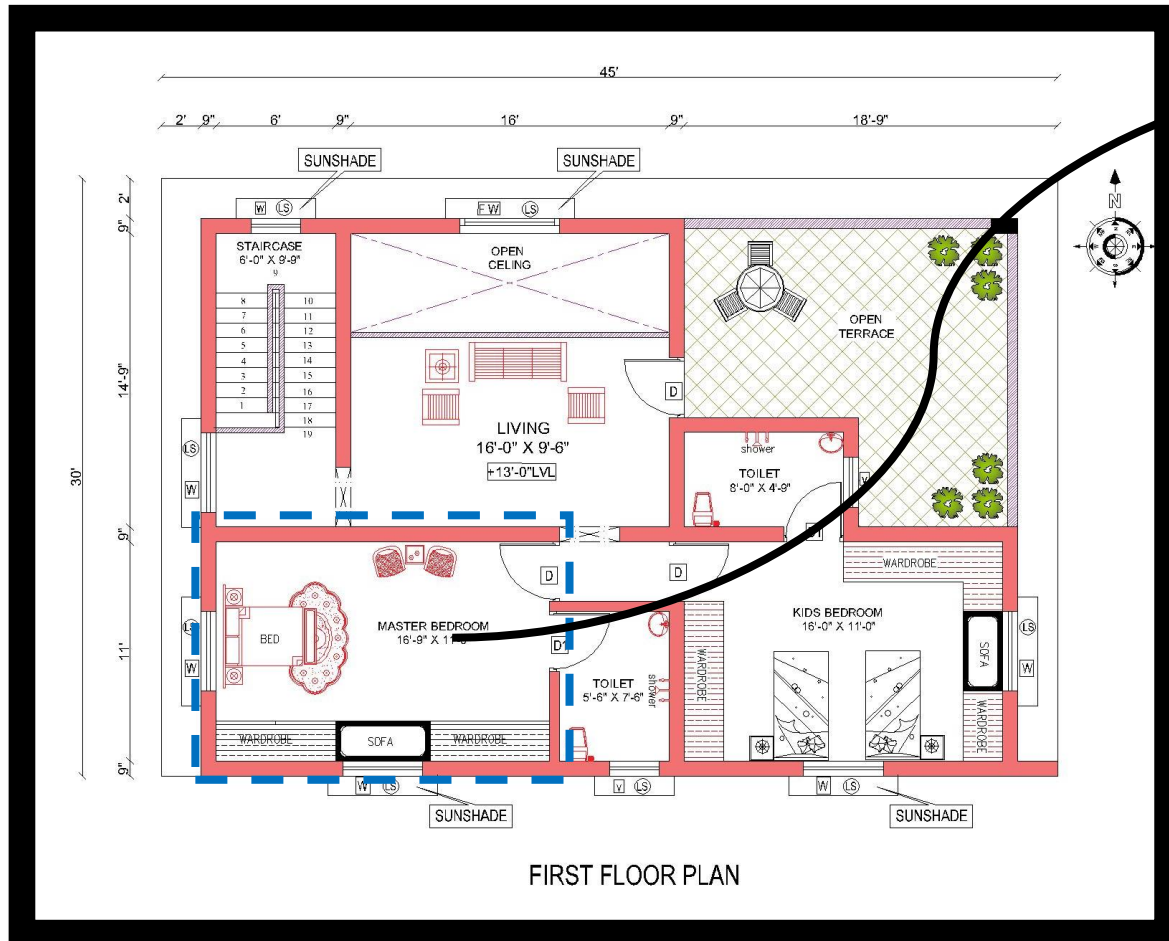
LIVING [16'-0" X 9'-6"]



The full open window floods the space with sunlight, creating a warm, inviting ambiance while reducing the need for artificial lighting during the day

FIRST FLOOR PLAN

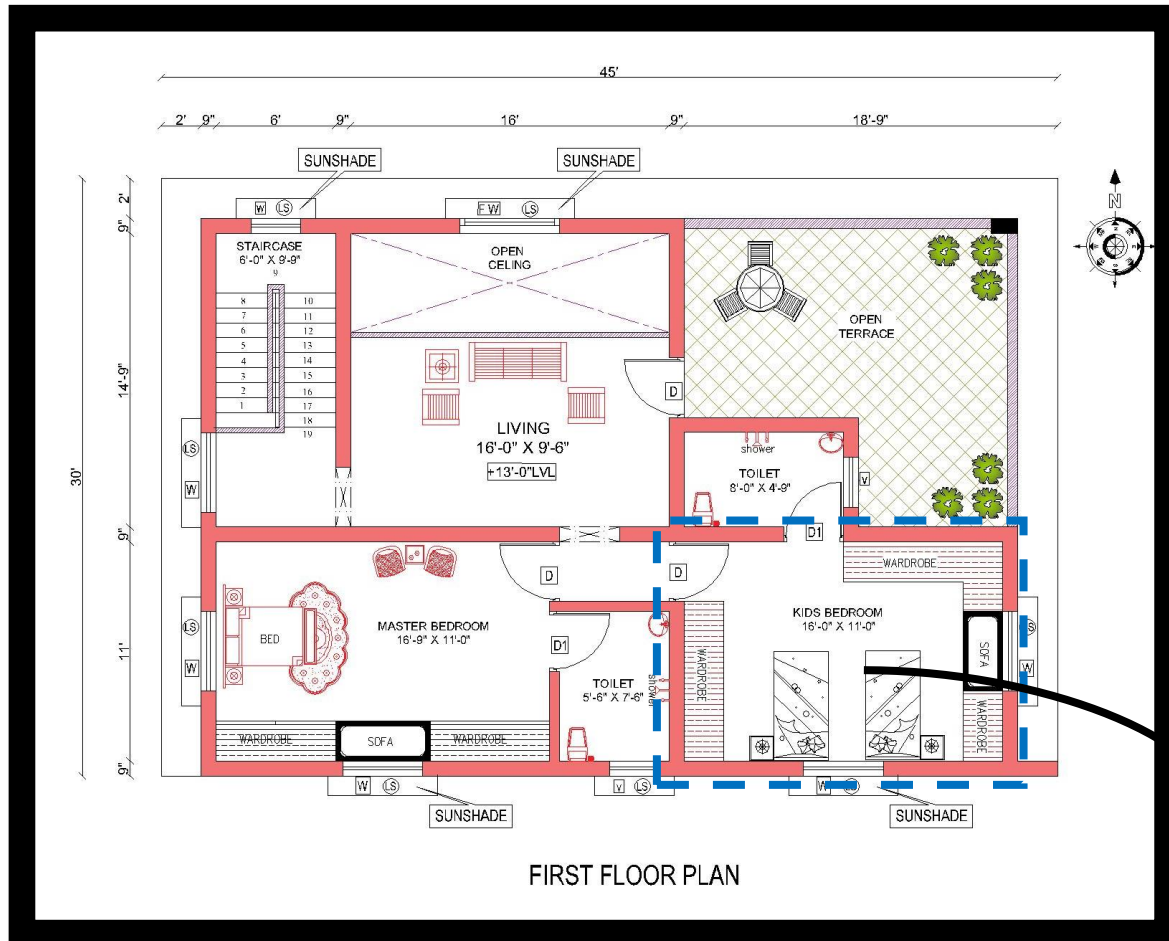
BEDROOM [16'-9" X 11'-0"]



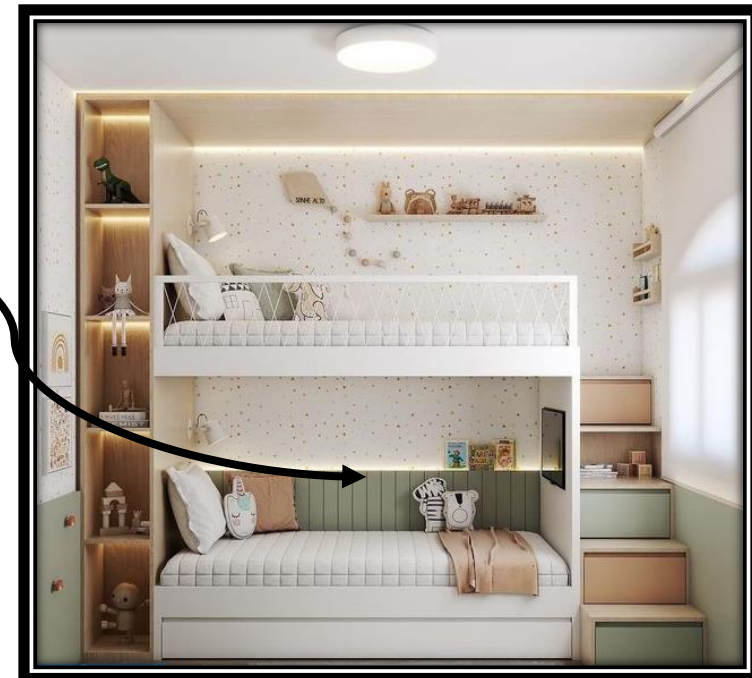
The bedroom is designed with energy-saving features such as proper insulation, energy-efficient windows, and smart lighting, helping to maintain a comfortable temperature and reduce energy consumption.

FIRST FLOOR PLAN

KIDS BEDROOM [16'-0" X 11'-0"]

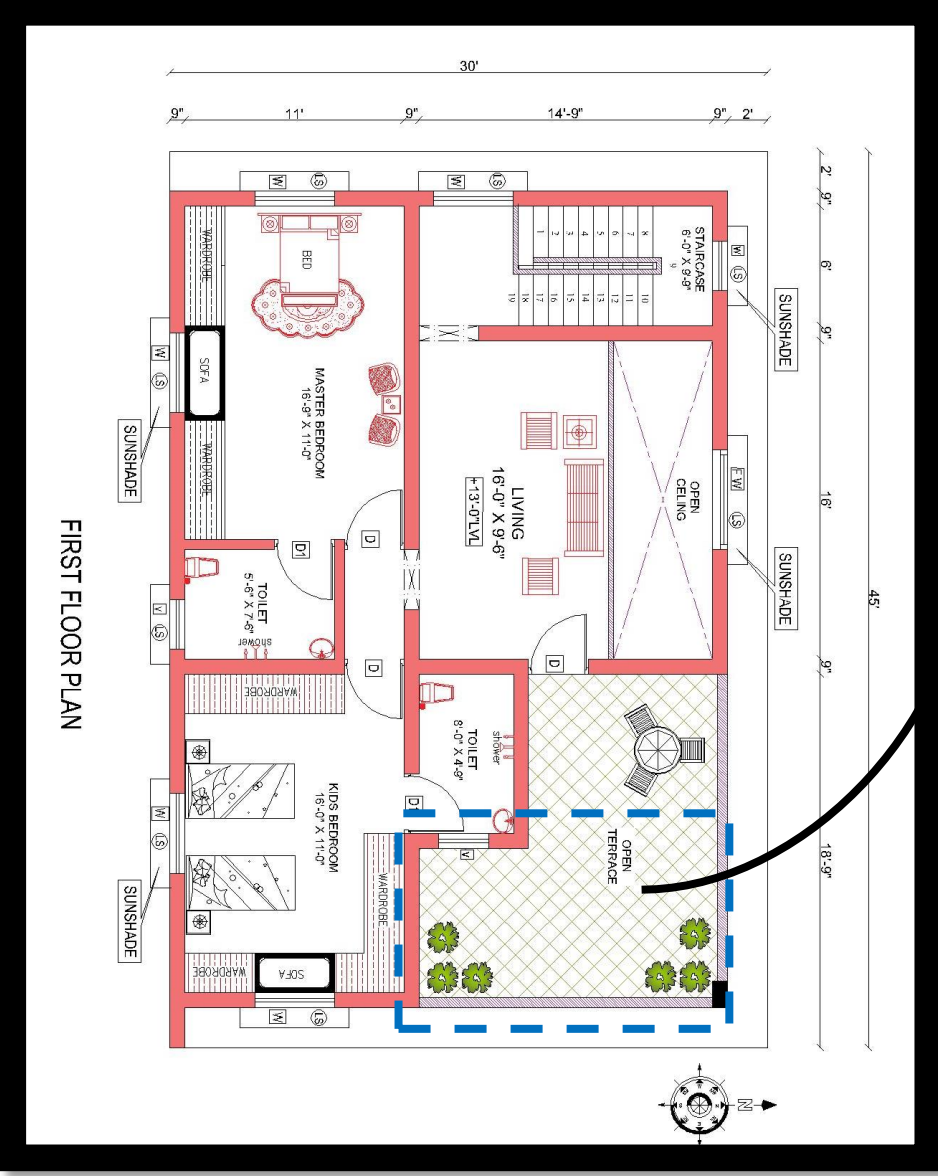


The kids' bedroom is a specialized space within the home, designed to meet the needs of younger occupants. It typically includes a bed, storage for clothing and toys, and areas for study or play. The layout and design prioritize safety, comfort, and functionality, often incorporating playful elements and vibrant colors to create a welcoming and engaging environment for children. The room can also be adapted as the child grows, ensuring long-term usability.



FIRST FLOOR PLAN

TERARACE



THE LOOK :

The exterior facade of the building, showcasing its architectural style, materials, and overall aesthetic. It includes detailed elements such as windows, doors, balconies, and decorative features that contribute to the building's visual appeal.