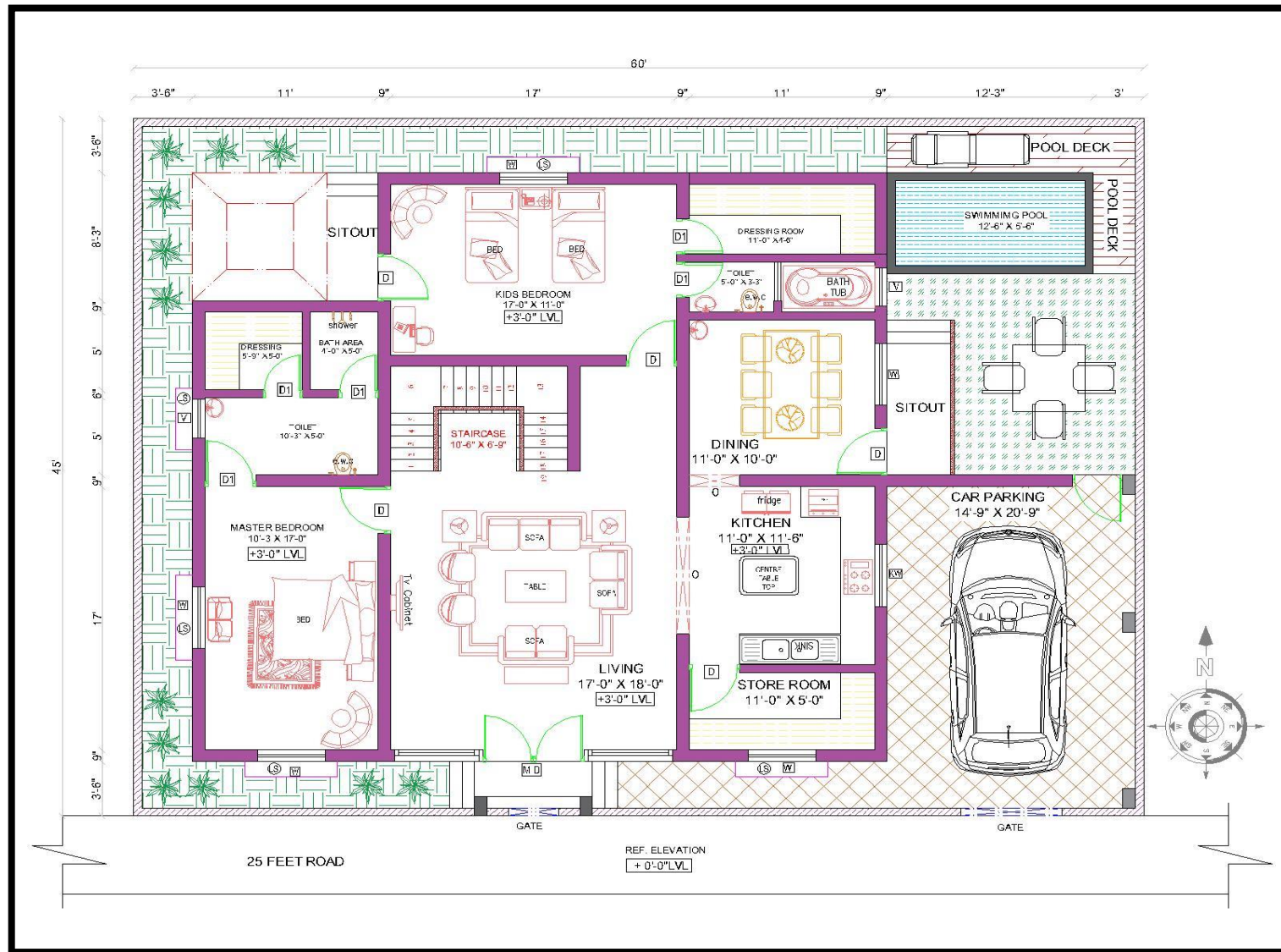
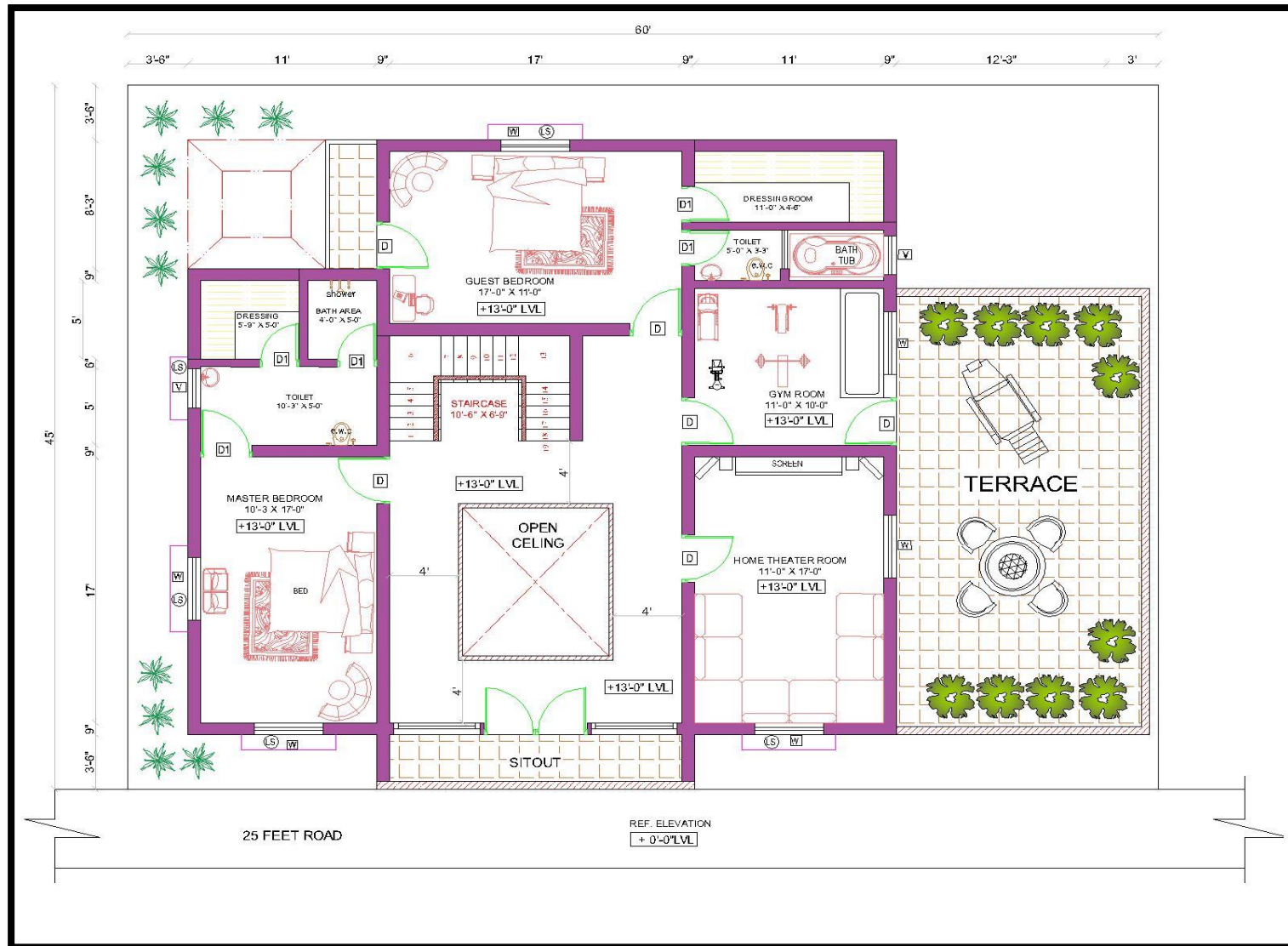


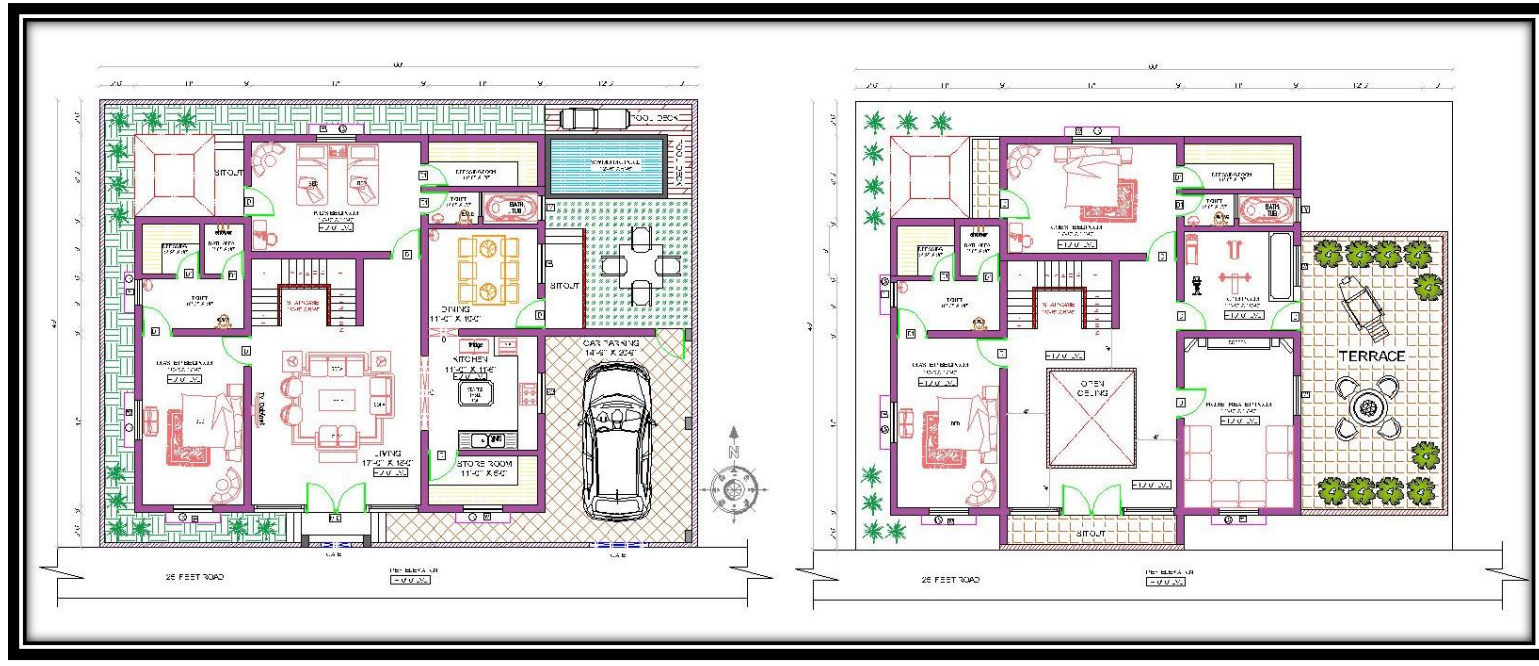
GROUND FLOOR PLAN



FIRST FLOOR PLAN



GROUND FLOOR AND FIRST FLOOR PLAN



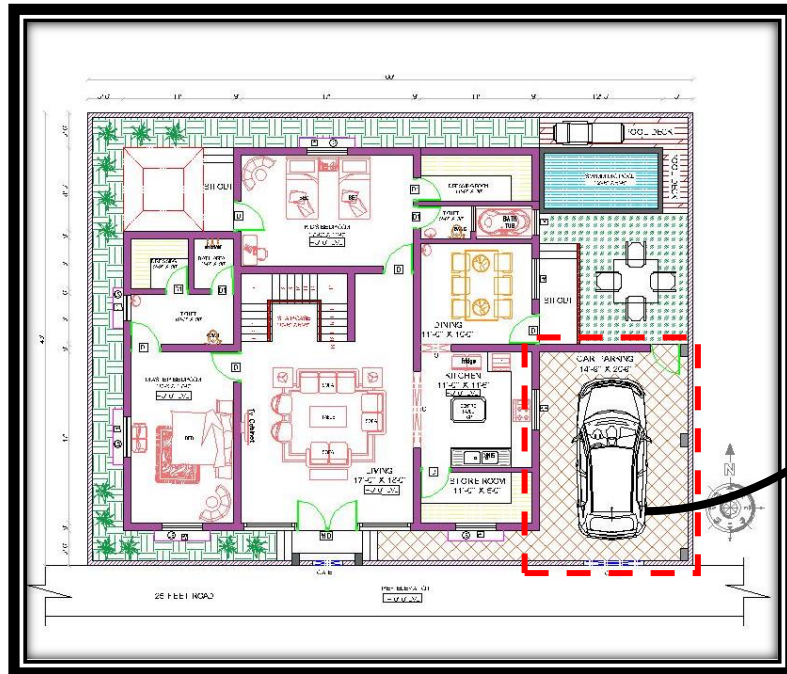
HOUSE PLAN 60' x 45' SOUTH FACING |

House Plan ground floors, the floors are completely utilized without wastage. The plot size is 60 feet x 45 feet. Total plinth area of building is 2700 sqft. And The Built up area is 2200 sqft at ground floor and 2200 sqft at first floor with fully occupied floor place.

6 BHK at ground and first floor independent house type. The house plans is well utilised with all utilities, staircase, balcony and well accommodating floor space.

GROUND FLOOR PLAN

CAR PARKING [14'-9" X 20'-9"]



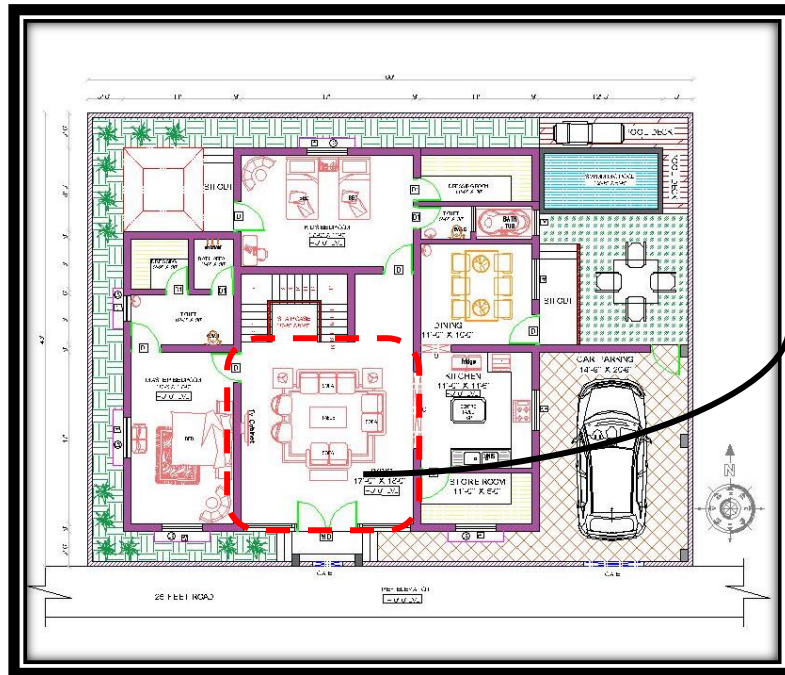
TRANQUIL ENTRANCE:

The main entrance to the house is emphasized with corner staircase with a spacious sit-out overlooking the lush garden area.



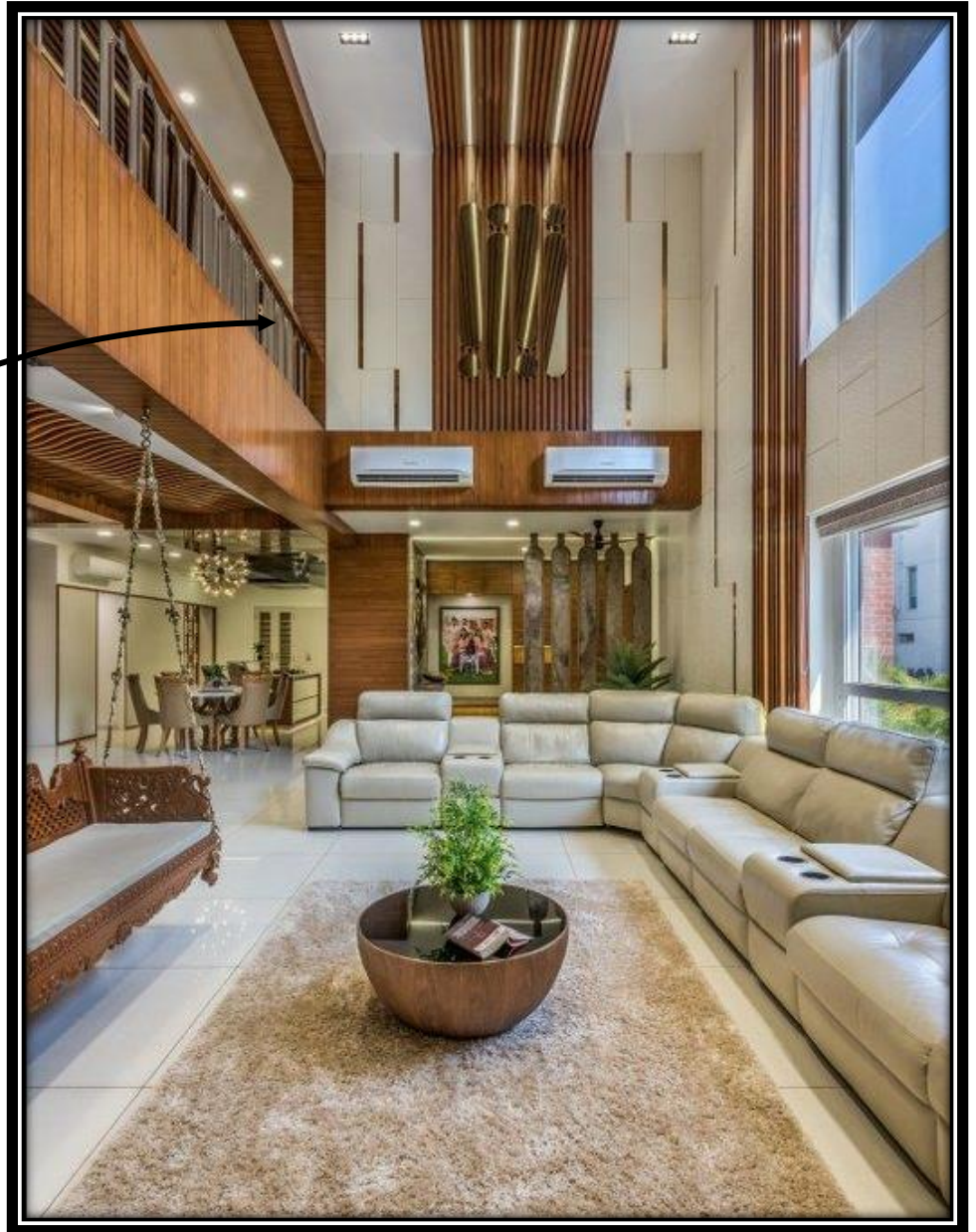
GROUND FLOOR PLAN

LIVING ROOM [17'-0" X 18'-0"]



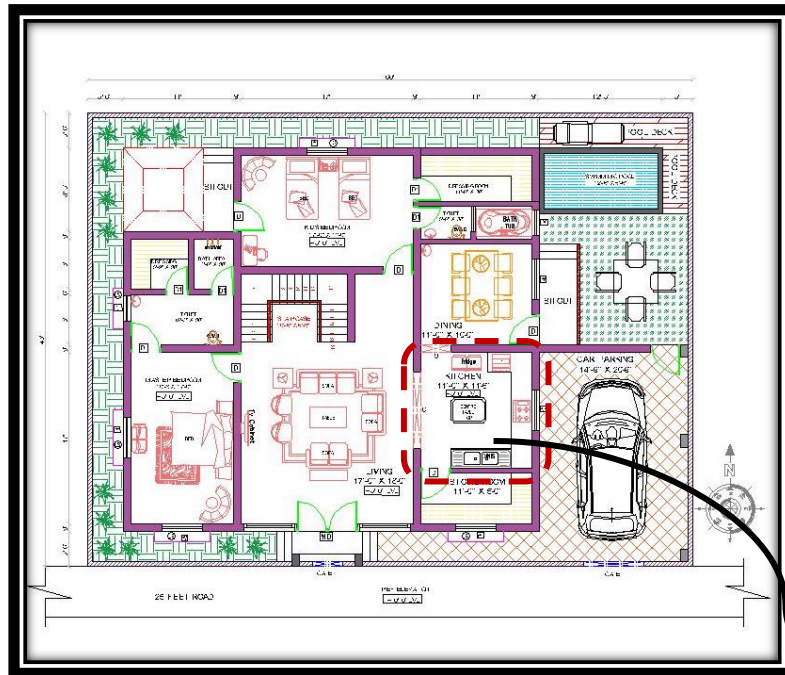
ENHANCED NATURAL LIGHT: The full open window floods the space with sunlight, creating a warm, inviting ambiance while reducing the need for artificial lighting during the day.

SEAMLESS FLOW: The integration of the dining and living areas creates a harmonious and functional layout, ideal for both everyday living and entertaining.



GROUND FLOOR PLAN

KITCHEN [11'-0" X 11'-6"]



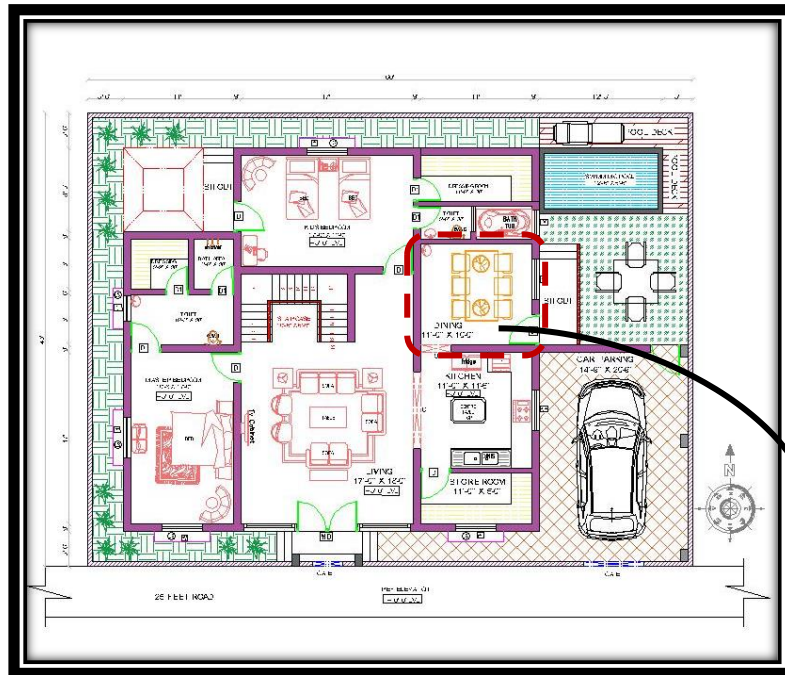
CLEANING & MAINTENANCE: Dishwashing and washing machines are provided a separate utility space to facilitate smooth functioning of the kitchen.

INCREASED EFFICIENCY: Each zone has a defined purpose, allowing smooth workflows and minimizing congestion during busy cooking or cleaning times. All kitchen appliances are provided separate counter space along with tall unit storage for ease of access and better storage



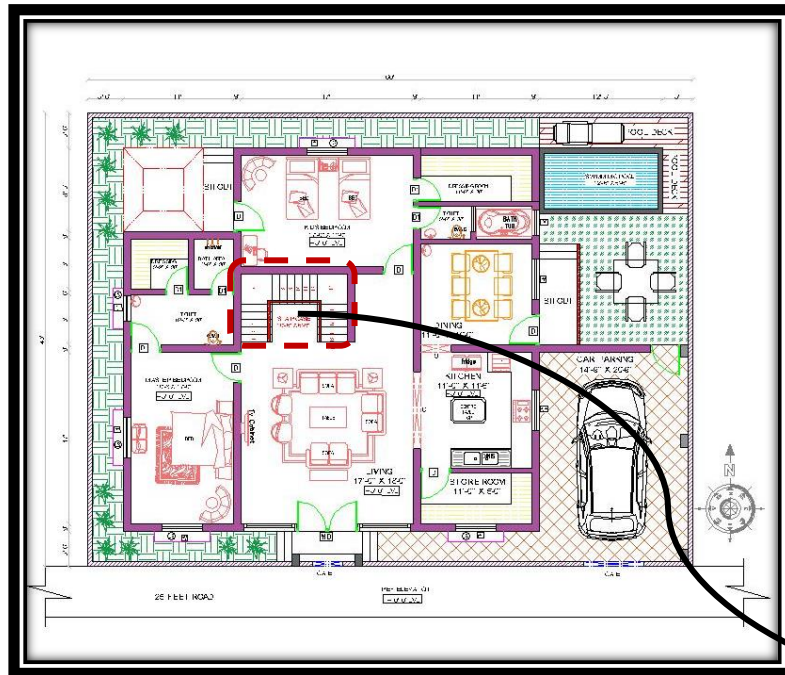
GROUND FLOOR PLAN

DINING [11'-0" X 10'-0"]



GROUND FLOOR PLAN

STAIRCASE [10'-6" X 6'-9"]



ENHANCED LIGHTING AND AIR CIRCULATION:

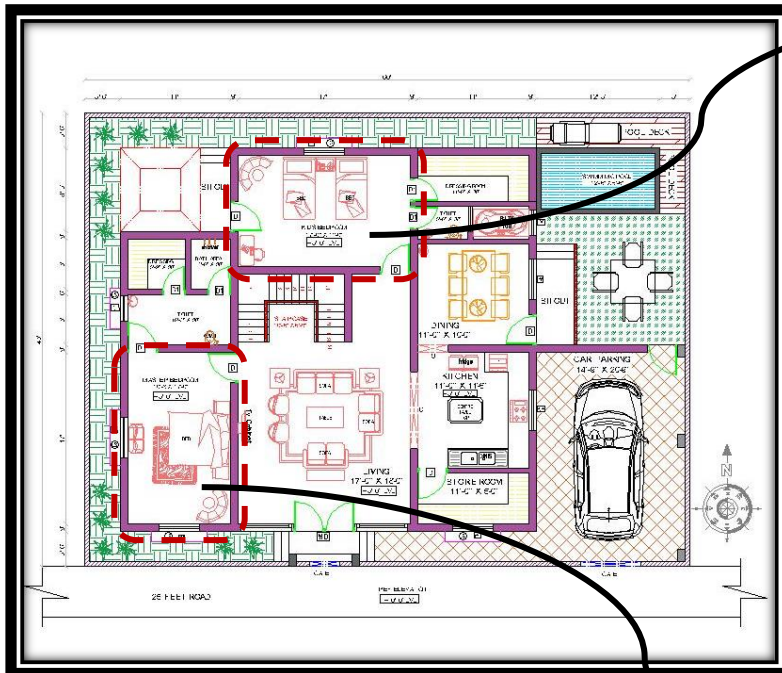
A courtyard space at the center provides a touch of nature into the living room and the double height enhances the space value and gives a sense of openness. The space beneath the staircase is utilized for the common bath while the courtyard catches the eyes with its natural flavor.



GROUND FLOOR PLAN

MASTER BEDROOM [10'-3" X 17'-0"]

KIDS BEDROOM [17'-0" X 11'-0"]



ENERGY EFFICIENCY: With natural airflow reducing the need for fans or air conditioners, this design is eco-friendly and cost-effective.

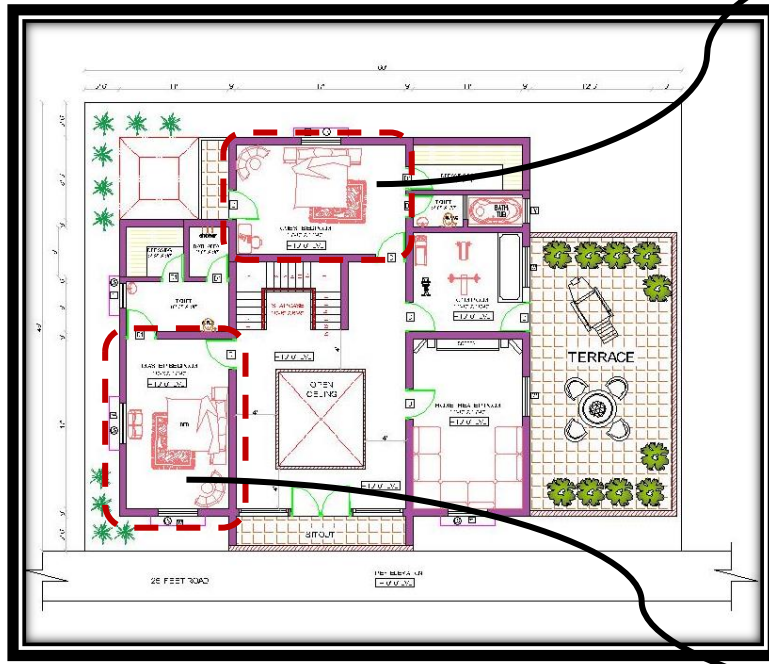
IMPROVED AIR CIRCULATION: Cross ventilation ensures a continuous flow of fresh air, keeping the room well ventilated and reducing stuffiness.



FIRST FLOOR PLAN

MASTER BEDROOM [10'-3" X 17'-0"]

GUEST BEDROOM [17'-0" X 11'-0"]



ENERGY EFFICIENCY: With natural airflow reducing the need for fans or air conditioners, this design is eco-friendly and cost-effective.

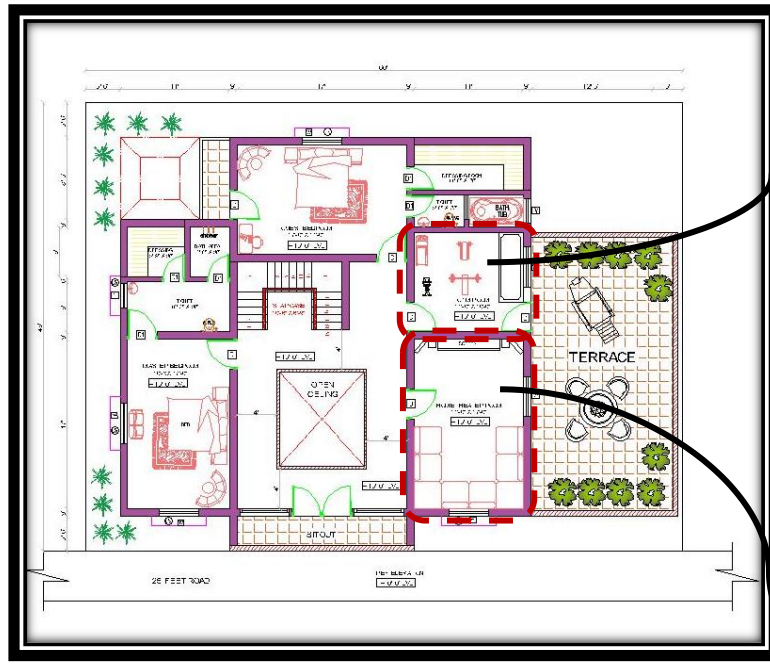
IMPROVED AIR CIRCULATION: Cross ventilation ensures a continuous flow of fresh air, keeping the room well ventilated and reducing stuffiness.



FIRST FLOOR PLAN

GYM ROOM [11'-0" X 10'-0"]

HOME THEATRE ROOM [10'-0" X 17'-0"]



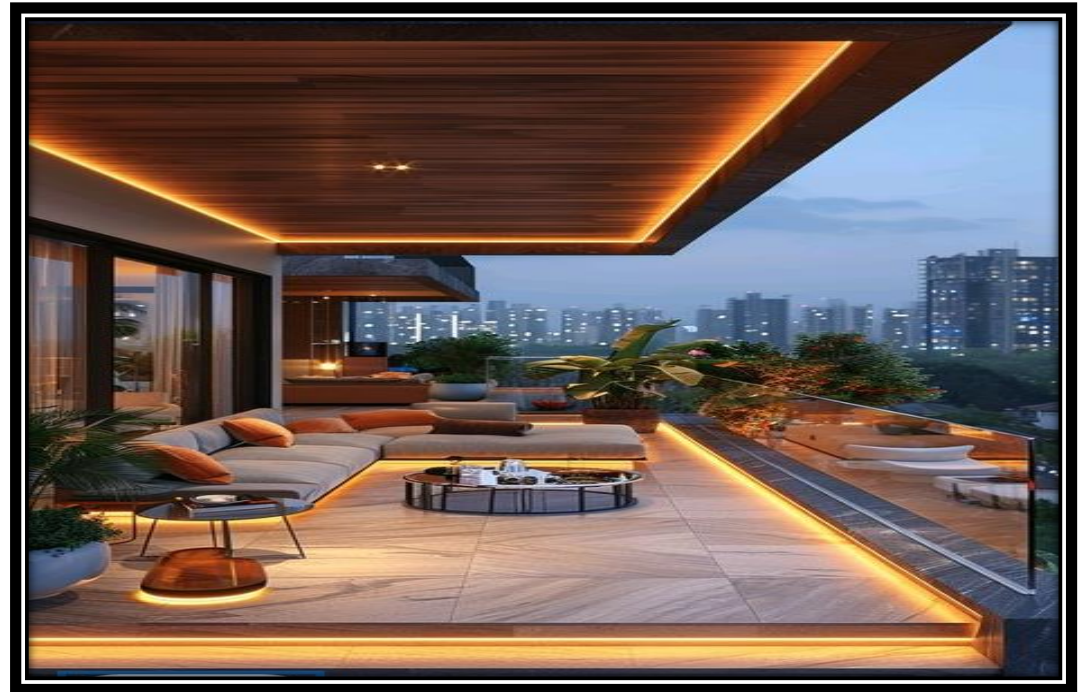
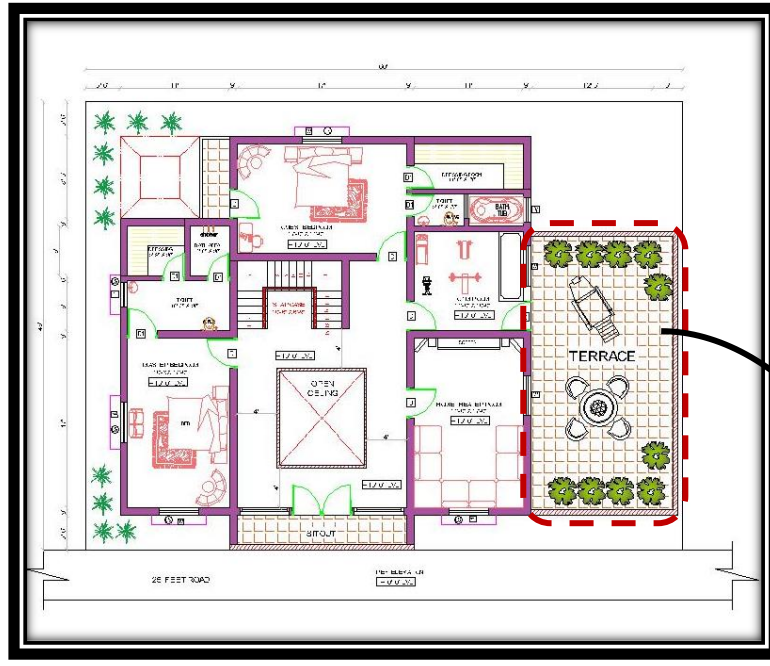
A COZY ENTERTAINMENT:

A compact home theatre allows the family for cinematic experience within the house as per their comfort and convenience.



FIRST FLOOR PLAN

TERRACE



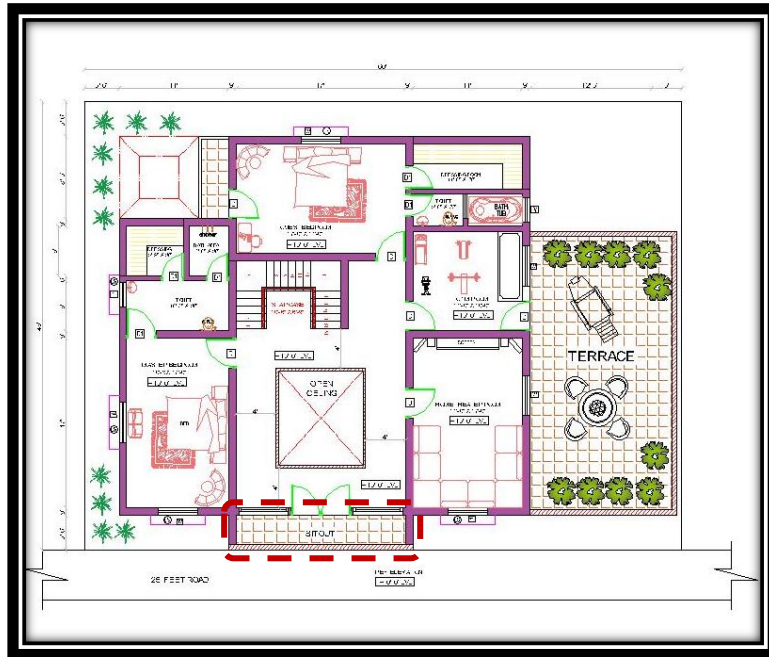
A TOUCH OF NATURE:

The terrace can be either closed with landscape or an open one. This shall ensure natural ventilation and sunlight without the accumulation of dust from the rapid traffic from the roads allowing the user to enjoy a serene moment



FIRST FLOOR PLAN

BALCONY



THE LOOK:

The projected balcony adds on a interesting element to the elevation and can be either a closed private balcony or an open one displaying the lush greeneries.

